



PLANNING COMMISSION MEETING AGENDA

Tuesday, October 18, 2016, 7:00 PM

City Municipal Center, 616 NE 4th Avenue

I. CALL TO ORDER

II. ROLL CALL

III. MINUTES

- A. Approval of the Minutes from the May 17, 2016 Planning Commission Meeting

 [May 17, 2016 Planning Commission Meeting Minutes](#)

IV. MEETING ITEMS

- A. Camas Transportation Corridors Study

Details: HDJ, a division of PBS, was hired by Camas staff to perform a study of two vital Camas corridors. The first corridor is an existing arterial consisting of NW 6th Avenue, NE 6th Avenue and the SR-500 corridor is comprised of NE Garfield Street, NE 14th Avenue and NE Everett Street. The purpose of this investigation is to determine the future needs and desires of all users and to work toward the definition and implementation of desired projects for this corridor. The second corridor considered in this study is a proposed arterial across the North Shore properties. This future 3 lane multimodal arterial will eventually replace Leadbetter Road along the Lacamas Lake frontage with a route farther north. HDJ was assigned to look at environmental, topographical and zoning elements of the underdeveloped properties between NE 232nd Avenue and NE Everett Street (SR-500) near its intersection with NE Garfield Street. The purpose of this investigative work is to provide greater clarity and assurances of an arterial roadway alignment to the property owners in the North Shore area as they work toward plans for development.

Presenter: James Carothers, Engineering Manager

Recommended Action: Staff is seeking comments from the Planning Commission regarding the findings and staff recommendations from the study of these corridors. Comments will be forwarded to Council.

 [Transportation Corridors Study Presentation](#)

V. MISCELLANEOUS UPDATES

- A. Miscellaneous Updates

VI. NEXT MEETING DATE

The next scheduled Planning Commission Meeting will be held on Tuesday, November 15, 2016, in the City Council Chambers at 7:00 p.m.

VII. ADJOURNMENT

NOTE: The City of Camas welcomes and encourages the participation of all of its citizens in the public meeting process. A special effort will be made to ensure that persons with special needs have opportunities to participate. For more information, please call 360.834.6864.



PLANNING COMMISSION MEETING MINUTES - DRAFT

Tuesday, May 17, 2016, 7:00 PM

City Municipal Center, 616 NE 4th Avenue

I. CALL TO ORDER

Chair Hull called the meeting to order at 7:00 p.m.

II. ROLL CALL

Present: Frank Hood, Troy Hull, Jim Short, Lloyd Goodlett and Jaima Johnson

Excused: Bryan Beel and Timothy Hein

Staff Present: Phil Bourquin, Jan Coppola, Sarah Fox, Robert Maul, David Schultz and Alicia Pacheco (intern)

Council Liaison: Bonnie Carter

Consultants: Don Hardy and Nicole McDermott, BergerABAM

III. MINUTES


- A. Approval of the Minutes from the April 19, 2016 Planning Commission Meeting

 [April 19, 2016 Planning Commission Meeting Minutes](#)

It was moved by Commissioner Hood, seconded by Commissioner Short to approve the minutes from the April 19, 2016 Planning Commission Meeting. The motion carried unanimously by roll call vote.

IV. MEETING ITEMS

- A. Public Hearing for Proposed Camas 2035 Comprehensive Plan (File No. CPA16-01)
Details: Camas 2035 is a citywide process to update the city's comprehensive plan. The comprehensive plan is a long-range plan that guides Camas' future growth and development. Interested citizens may find information on the Camas 2035 project history, outreach details, current draft document (dynamic version), and draft maps online at the following website: <http://www.camas2035.com/>.
Presenter: Sarah Fox, Senior Planner

 [Camas 2035 Comprehensive Plan Staff Report Edition 3](#)
[Camas 2035 Staff Report Edition 1.0](#)
[Camas 2035 Staff Report Edition 2.0](#)
[Department of Commerce Checklist](#)
[SW Washington RTC Checklist](#)
[Draft Comprehensive Plan \(109MB\)](#)
[Draft Camas Zoning Map](#)
[Draft CAMAS Comprehensive Plan Map](#)
[Appendices to Draft Comprehensive Plan \(15MB\)](#)
[Camas 2035 PowerPoint Presentation](#)

Sarah Fox gave a PowerPoint Presentation that highlighted the six elements of the Camas 2035 Comprehensive Plan. She expanded on how the elements are envisioned to work together and explained the legislative process for adopting the plan. She briefly noted minor corrections in the draft plan and encouraged the Commissioners to forward any other corrections needed.

Staff responded to the Commissioner's inquiries.

The public testimony portion of the hearing opened and closed at 8:05 p.m., as there were not any members of the public who wished to speak.

After a lengthy discussion, it was moved by Commissioner Johnson, seconded by Commissioner Goodlett to forward a recommendation to City Council to approve the Camas 2035 Comprehensive Plan (File No. CPA16-01). The motion carried unanimously by roll call vote.

V. MISCELLANEOUS UPDATES

A. Miscellaneous Updates

Phil Bourquin complimented City staff and BergerABAM staff for the tremendous work on the Camas 2035 Comprehensive Plan. He also expressed his appreciation to the Commissioners for their dedication and commitment.

VI. NEXT MEETING DATE

The next scheduled Planning Commission Meeting will be held on Tuesday, June 21, 2016, in the City Council Chambers at 7:00 p.m.

VII. ADJOURNMENT

Chair Hull adjourned the meeting at 8:20 p.m.

NOTE: The City of Camas welcomes and encourages the participation of all of its citizens in the public meeting process. A special effort will be made to ensure that persons with special needs have opportunities to participate. For more information, please call 360.834.6864.

Camas Transportation Corridors Study

Presented to City of Camas – Planning Commission



Project Team

- James Carothers, City of Camas
- Steve Wall, City of Camas
- Phil Bourquin, City of Camas
- Greg Jellison, PE – Principal in Charge (HDJ)
- Rich Darland, PE – Project Manager (HDJ)
- Cory Kratovil, PE – Design Engineer (HDJ)
- Julie Sosnovske, PE – Traffic Engineer (DKS)
- Dustin Day – Natural Resources (BergerABAM)

Scope of Study

- 6th Avenue / Everett St. Corridor
 - Provide recommendations to accommodate multi-modal travel within the corridor
 - Provide recommended intersection configurations
 - Identify options for replacing bridge at Lacamas Lake / Round Lake
- Lacamas North Shore Area
 - Identify preferred location for arterial corridor
 - Identify preferred intersection control for corridor
 - Identify potential access points along corridor

6th Avenue / Everett Street (SR 500) Study

- Study area extends from 6th / Norwood Roundabout, through downtown to SR 500, then north to the City Limits.
- Study area broken into six segments of similar nature and mobility issues

6th Avenue / Everett Street (SR 500) Study

- Segment 1- NW 6th Avenue (SR 14 to NE Adams Street)
- Segment 2 – NE 6th Avenue (NE Adams Street to NE Garfield Street)
- Segment 3 – NE Garfield Street (SR 500)/NE 14th Avenue (NE 6th Avenue to NE Everett Street)
- Segment 4 – NE Everett Street (NE 14th Avenue to NE 23rd Avenue)
- Segment 5 – NE Everett Street (NE 23rd Avenue to NW Lake Road)
- Segment 6 – NE Everett Street (NW Lake Road to NE 3rd Street)

6th Ave. / Everett St. – Existing Conditions

- Traffic Data from 2012 Camas TIF Update
- Traffic Data collected at 7 study intersections
- Identified existing multi-modal features
- Utilized collected and TIF data to create Existing Conditions Model

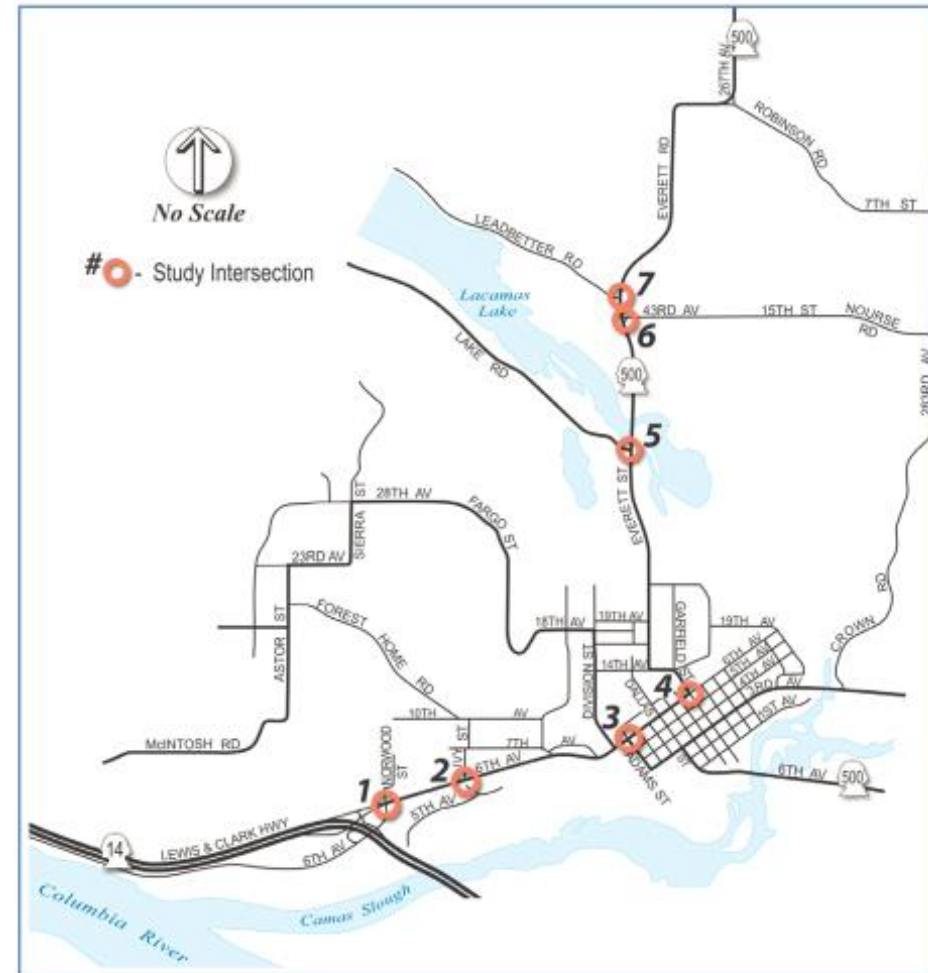


Figure 1: Study Area

Courtesy DKS

6th Ave. / Everett St. – Existing Conditions

- Identified Intersection Operations
 - All intersection operate below capacity except for Everett Street / Lake Road
- Collected 3-year crash history
 - Crash rates below 1.0 Crash / MEV at intersections
 - Crash rates near or above County Avg 138.7/100MV
 - Many accidents related to rear end / excessive speed
- Collected parking data for downtown area
 - Highest usage during the work day
 - Most locations 50% to 80% occupied

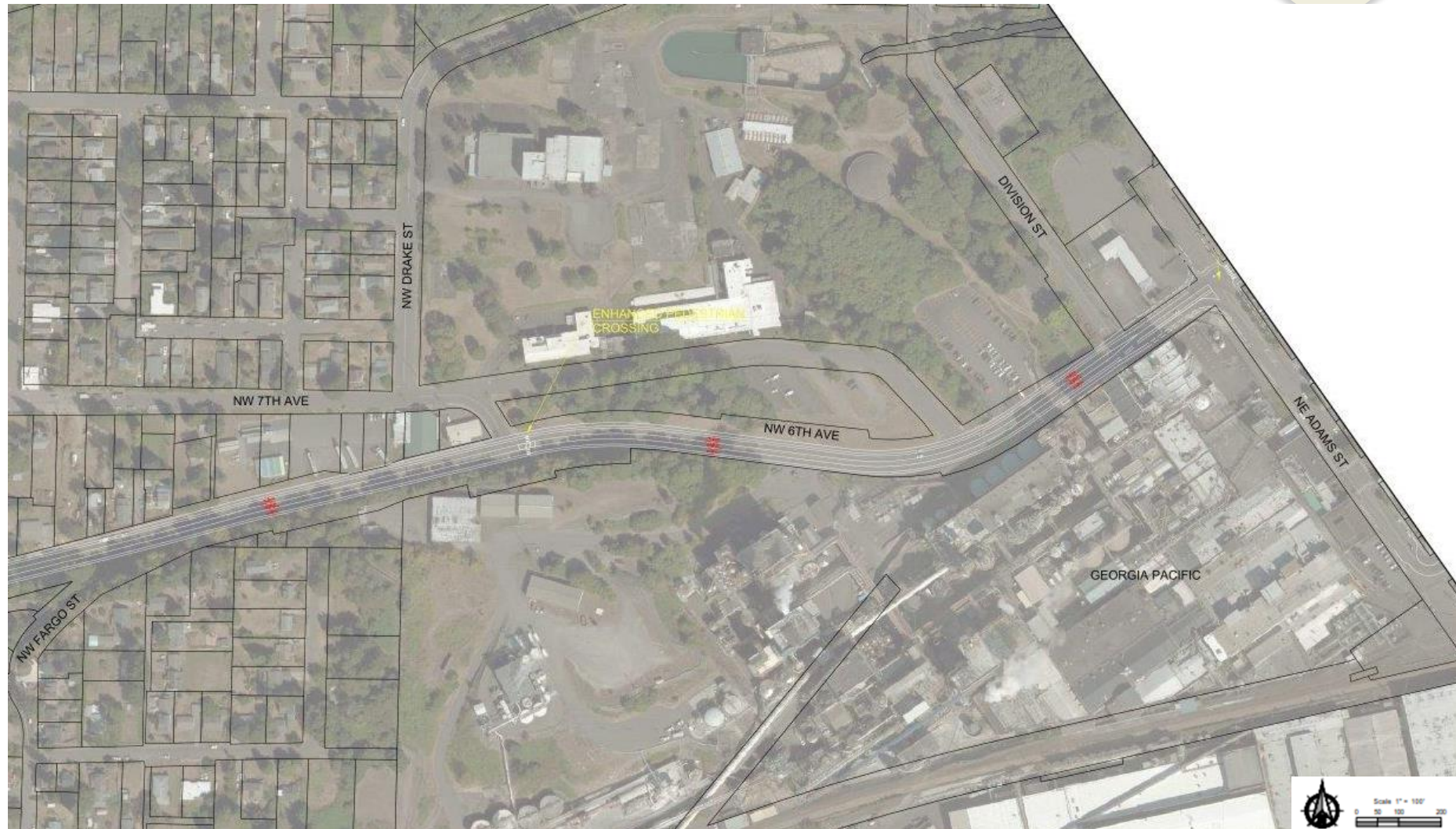
6th Ave. / Everett St. – Future Conditions

- Forecasted to Year 2035
- Most study intersections over capacity in current configuration
- Recommendations made for each segment and study intersections to maintain capacity

NW 6th Ave – Norwood to Adams (Part 1)



NW 6th Ave – Norwood to Adams (Part 2)

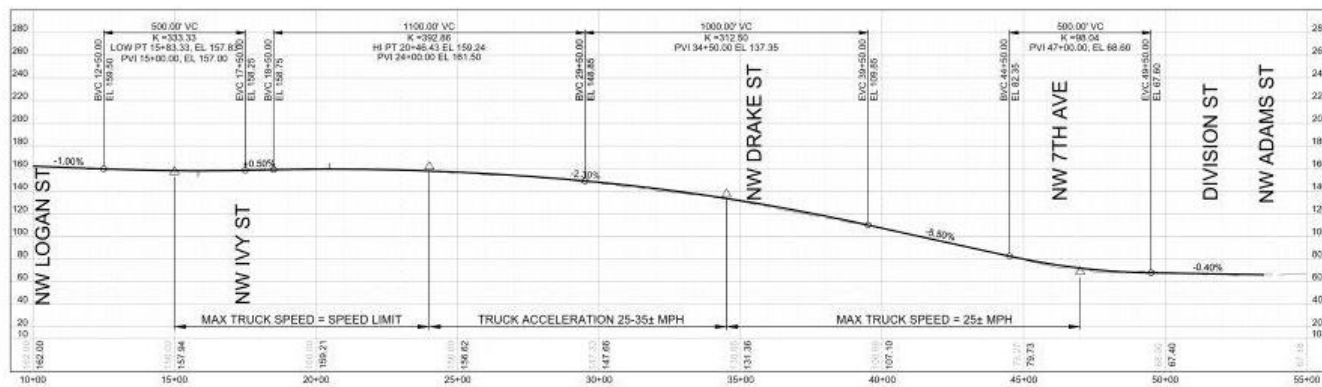


NW 6th Ave – Norwood to Adams

Recommendations

- Add enhanced pedestrian crossings at Ivy St. and Drake St.
- ‘Road Diet’ is feasible for this segment
 - Additional studies may need to review gap availability for side street turn movements
 - Review uphill truck speed coming from downtown

NW 6th Ave – Road Diet – Truck Speeds



NW 6th Ave – Adams to Garfield



NW 6th Ave – Adams to Garfield

Recommendations

- 6th / Adams – Add pedestrian enhancements
 - Future single lane roundabout
- 6th / Dallas – Maintain current stop control
 - Review capacity as development occurs
 - May be impacted if 3rd Street reconfigured
- 6th / Garfield – Maintain current stop control
 - Review need for signal as development occurs
- Add bike lanes along segment
- Keep on-street parking / Add curb extensions at intersections

NE Garfield Street / NE 14th Avenue

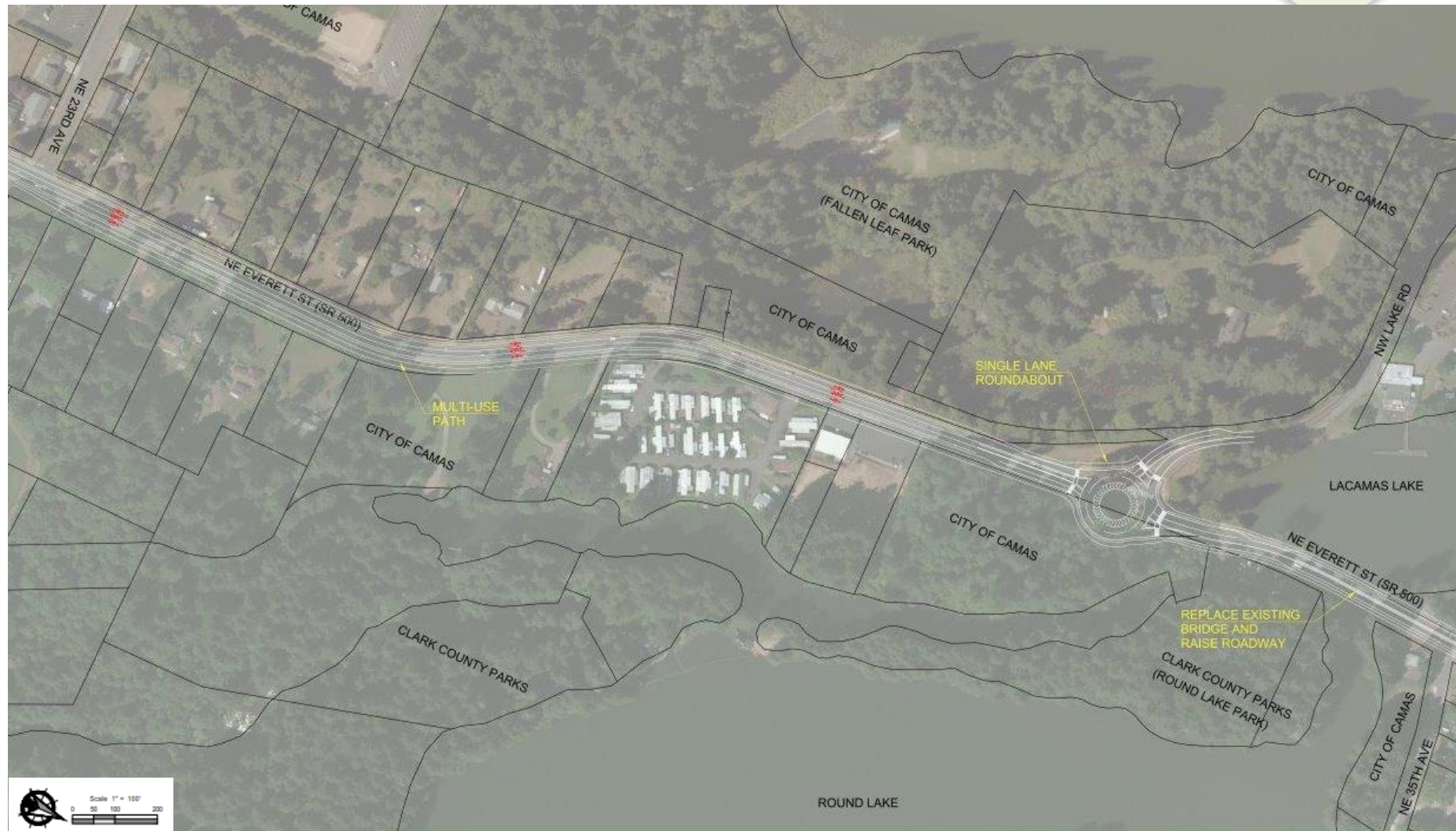


NE Garfield Street / NE 14th Avenue

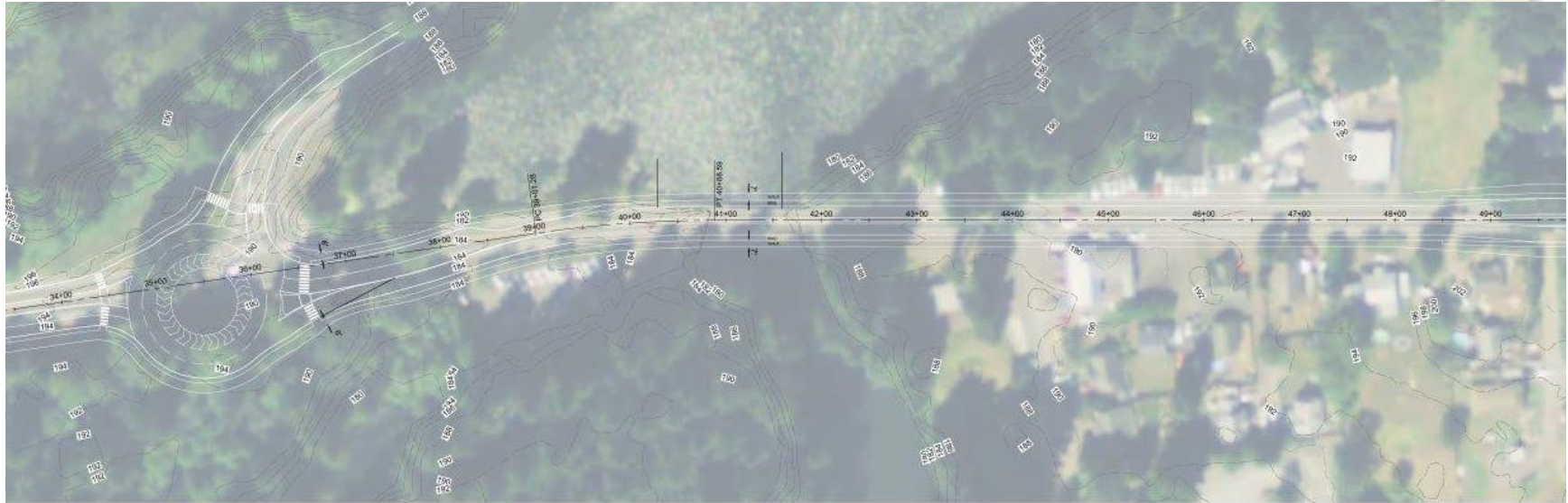
Recommendations

- Maintain Striping performed by WSDOT
- Reconfigure Garfield / Ione Intersection
- Close South and West legs of 14th Street / Everett St. Intersection per TIF Study
- Maintain existing pedestrian crossings
 - Consider Enhanced Crossings as traffic increases

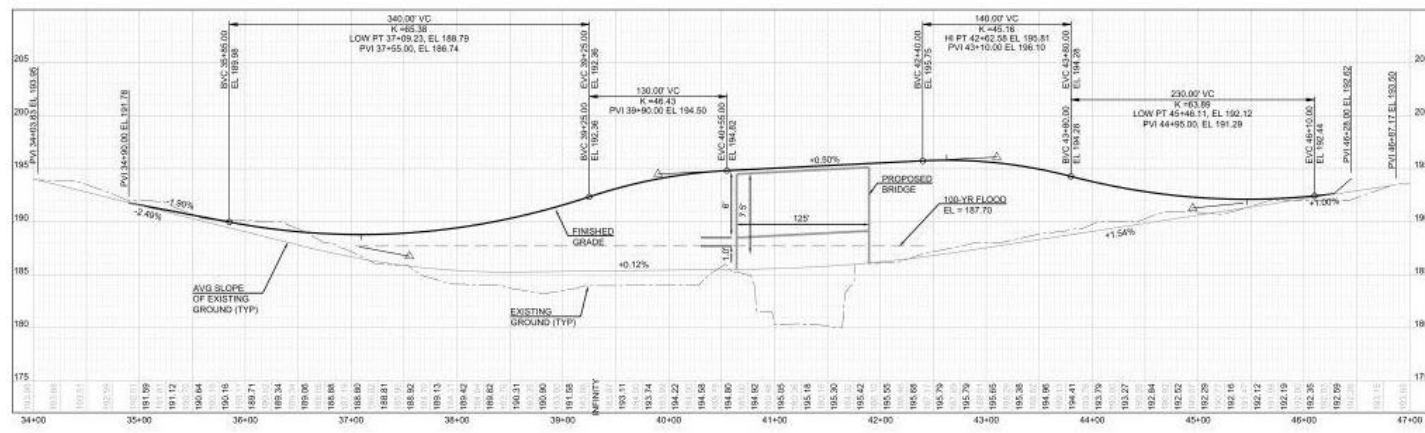
Everett St. - NE 23rd Avenue to Lake Road



Everett St. – Bridge Replacement



DESIGN SPEED=40MPH $K_C=44$
POSTED SPEED=35MPH $K_S=64$



FEMA 100-YR FLOOD EL 191.0
ADJUST TO CITY DATUM -3.3
AS SHOWN ON PROFILE EL 187.7
BOTTOM OF BRIDGE EL 188.7

Everett St. - NE 23rd Avenue to Lake Road

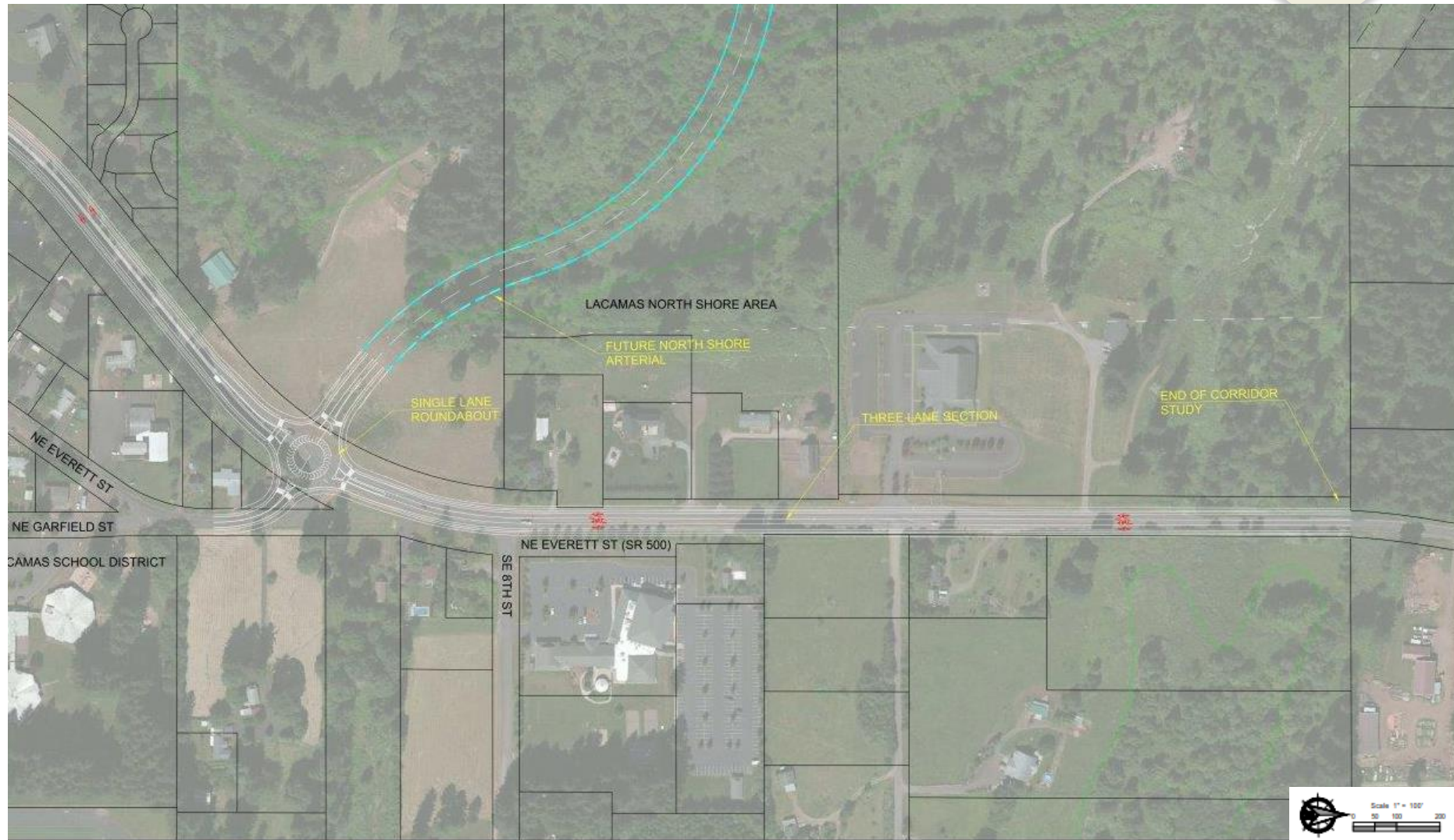
Recommendations

- Ultimate roadway section should include center left turn lane, bike lanes, sidewalks on both sides
- Consider implementing 12' multi-use path on east side to connect to Round Lake Park
- Everett St. / Lake Rd. Intersection will need improvements before 2035
 - Consider Single-Lane Roundabout
 - Volumes balanced on each leg
- Bridge will need to be replaced
 - Raise road grade to avoid overtopping in 100-year flood

NE Everett St. – NW Lake Road to City Limit



NE Everett St. – NW Lake Road to City Limit

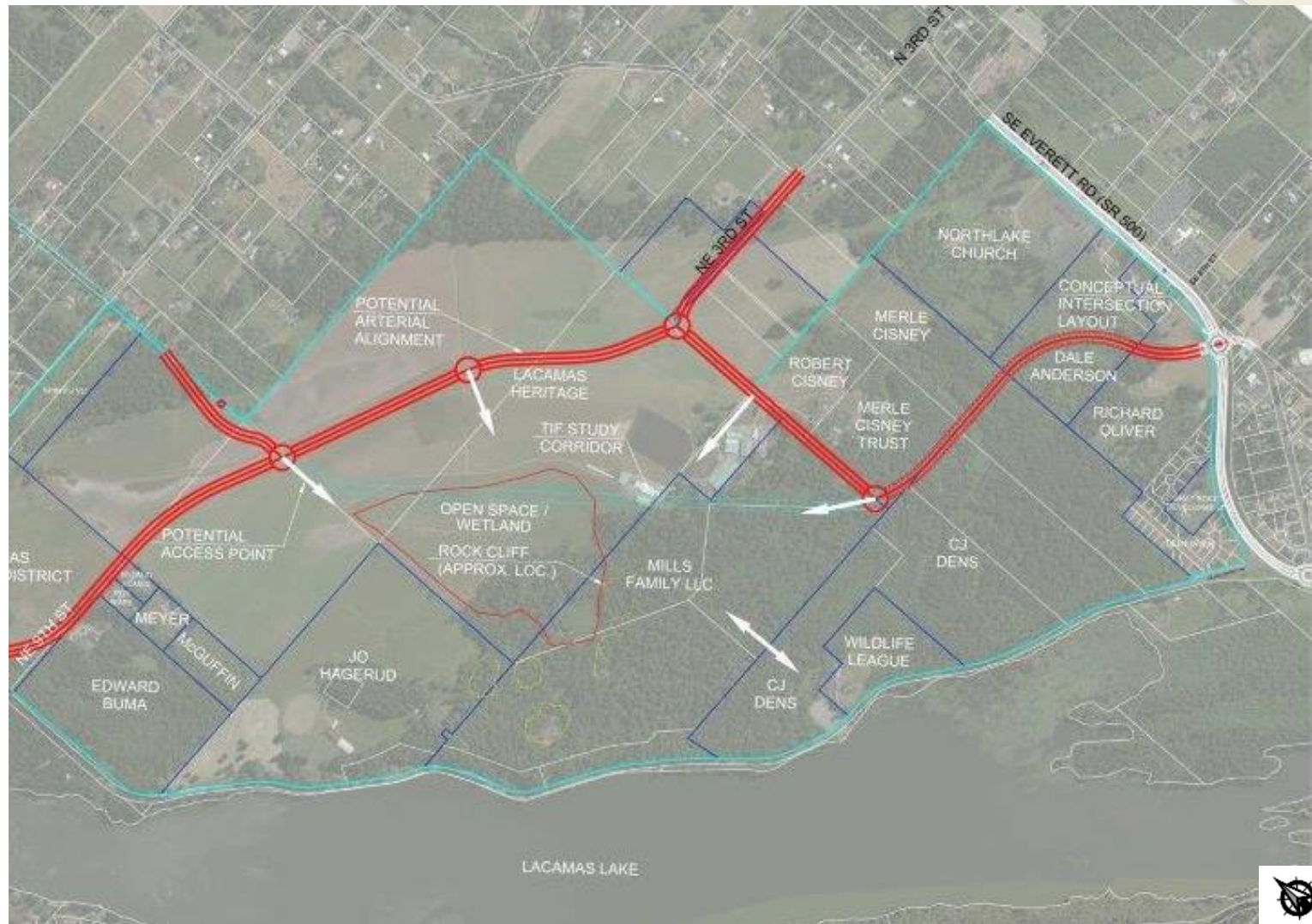


Everett St. - NW Lake Road to City Limit

Recommendations

- Ultimate roadway section should include center left turn lane, bike lanes, sidewalks on both sides
- Consider single-lane roundabouts at these intersections:
 - NE 38th Avenue
 - NE 43rd Avenue
 - Everett Drive / Lacamas North Shore Area access
- Roundabout could allow for continuous median with right-in / right-out only along corridor

Lacamas North Shore Area



Lacamas North Shore – Existing Conditions

- Undeveloped area north of Lacamas Lake
- Utilized 2012 Camas TIF Study
- No new counts – road network not existing
- Studied following intersections
 - NE 232nd Ave / NE 28th St.
 - Leadbetter Rd / NE Everett St.
 - NE Everett Dr. / NE Everett St.



al/Collector Roadway Network

Lacamas North Shore Area

- All Study Intersections currently operate below capacity
- Improvements will be needed at connections to existing roadway network by build-out
- NW Ingle Road / NE 28th Street
 - SB Right Turn Lane
 - Second EB Left Turn Lane
 - Second NB Receiving Lane on Ingle Road
- NW 242nd Ave / NE 28th St
 - SB Left Turn Lane

Lacamas North Shore Area

- Arterial should have three lane section with center left turn lane, bike lanes, and sidewalks on both sides
- Consider using single lane roundabouts at internal intersections to accommodate a variety of land uses
- Consider limited access (median) between roundabouts
- NE 9th Street / NE 232nd Ave is likely initial connection to the west.

Camas Corridors Study

- Planning Commission Comments

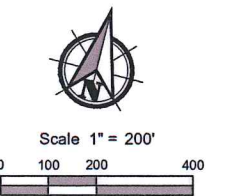
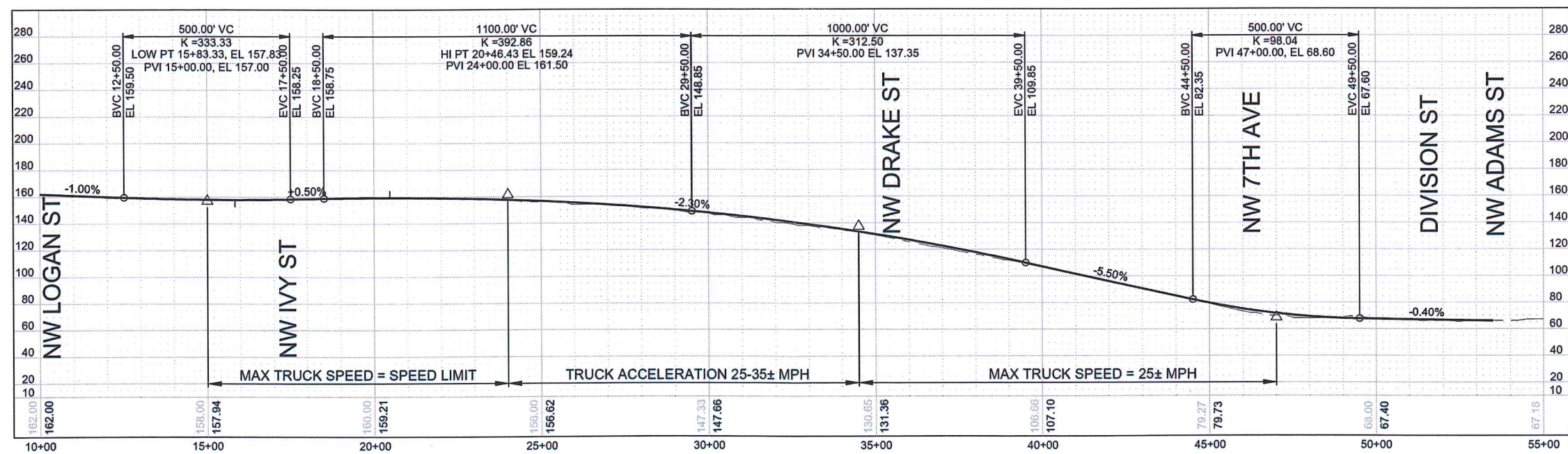
Camas Corridors Study - Next Steps

- Planning Commission Comments
- Present to City Council
- Continue Discussion on Each Section
- Develop Transportation Capital Improvements Projects
 - Consider Schedule, Budget, Development Priorities



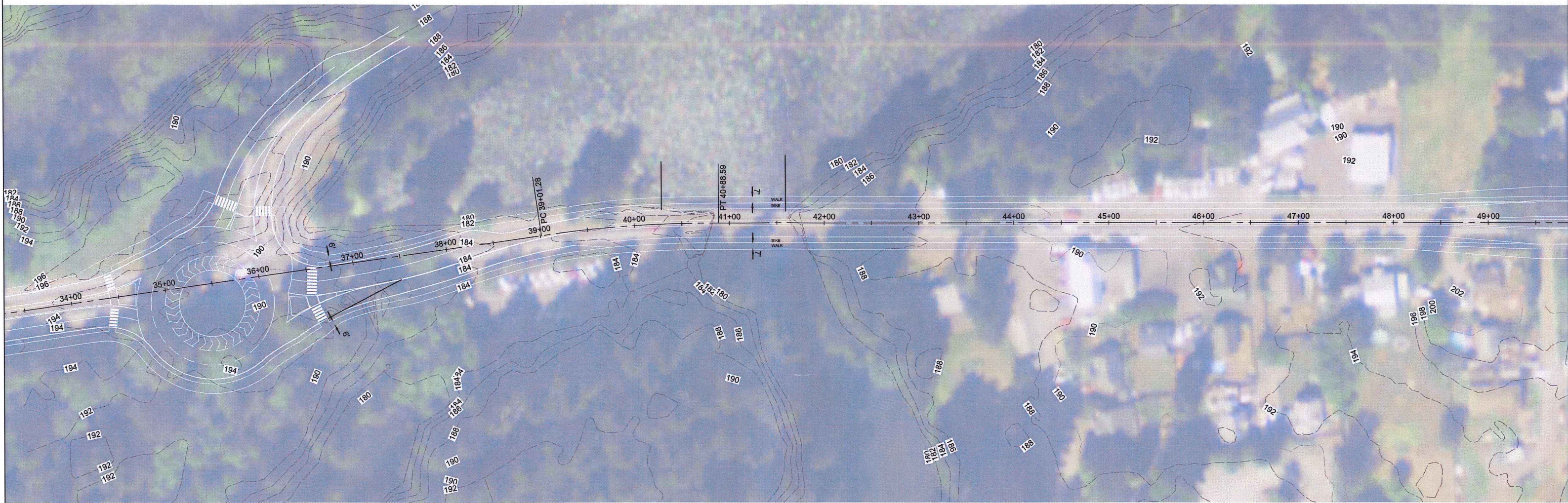




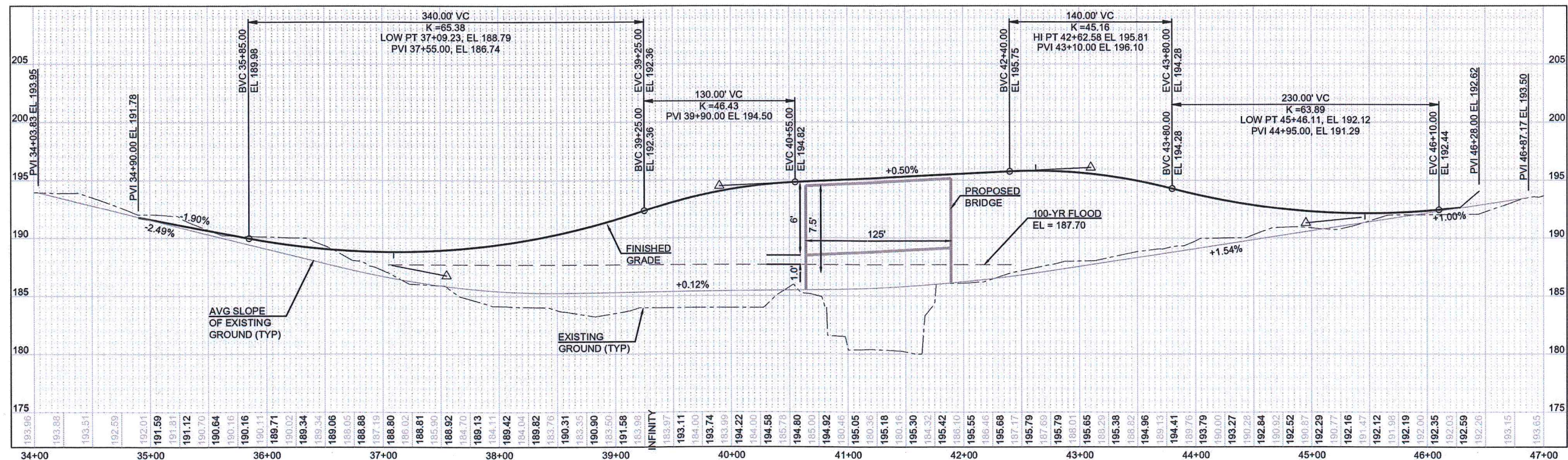
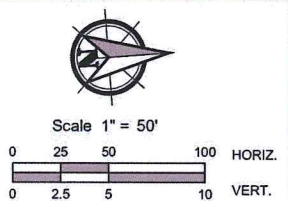






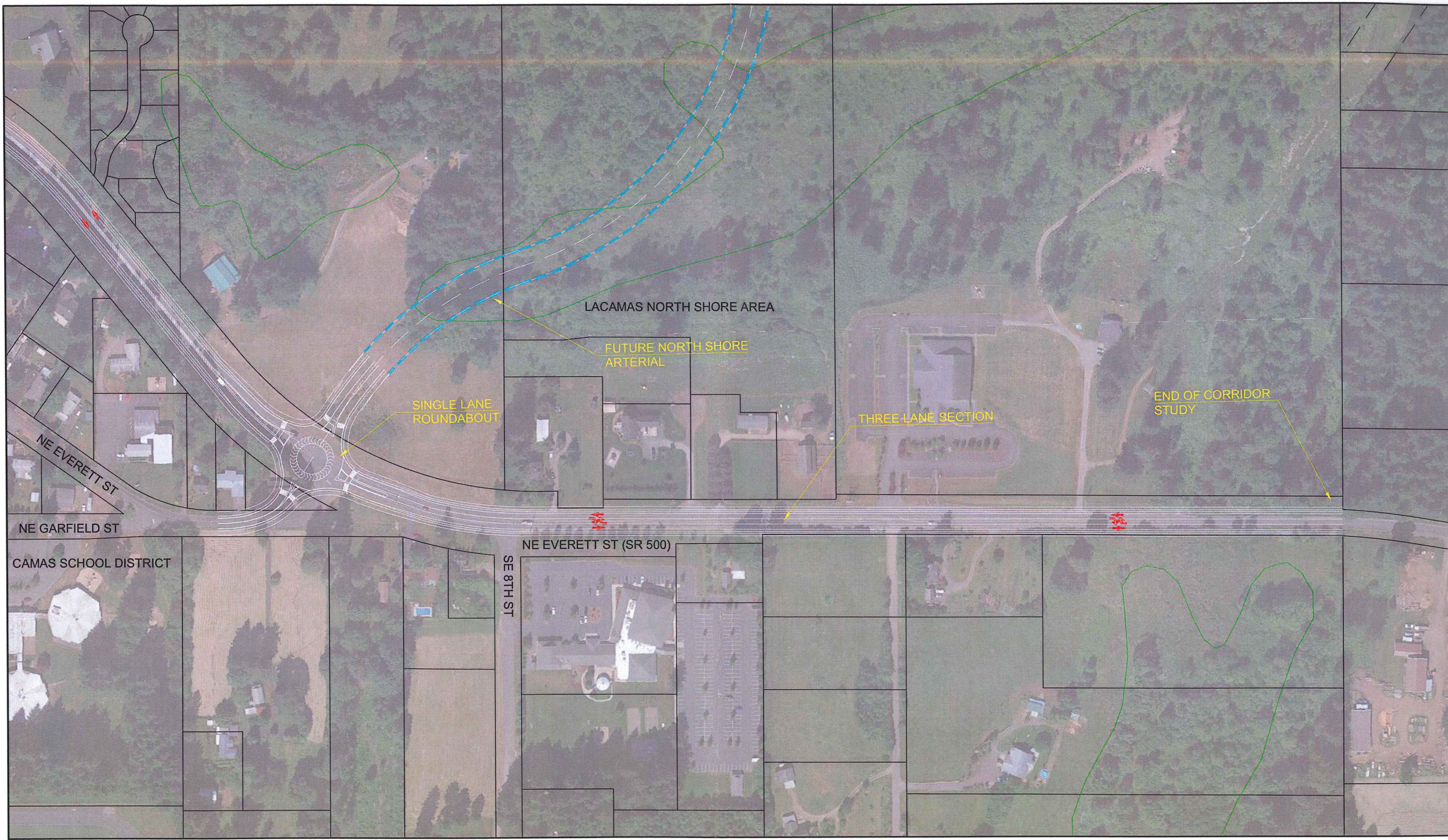


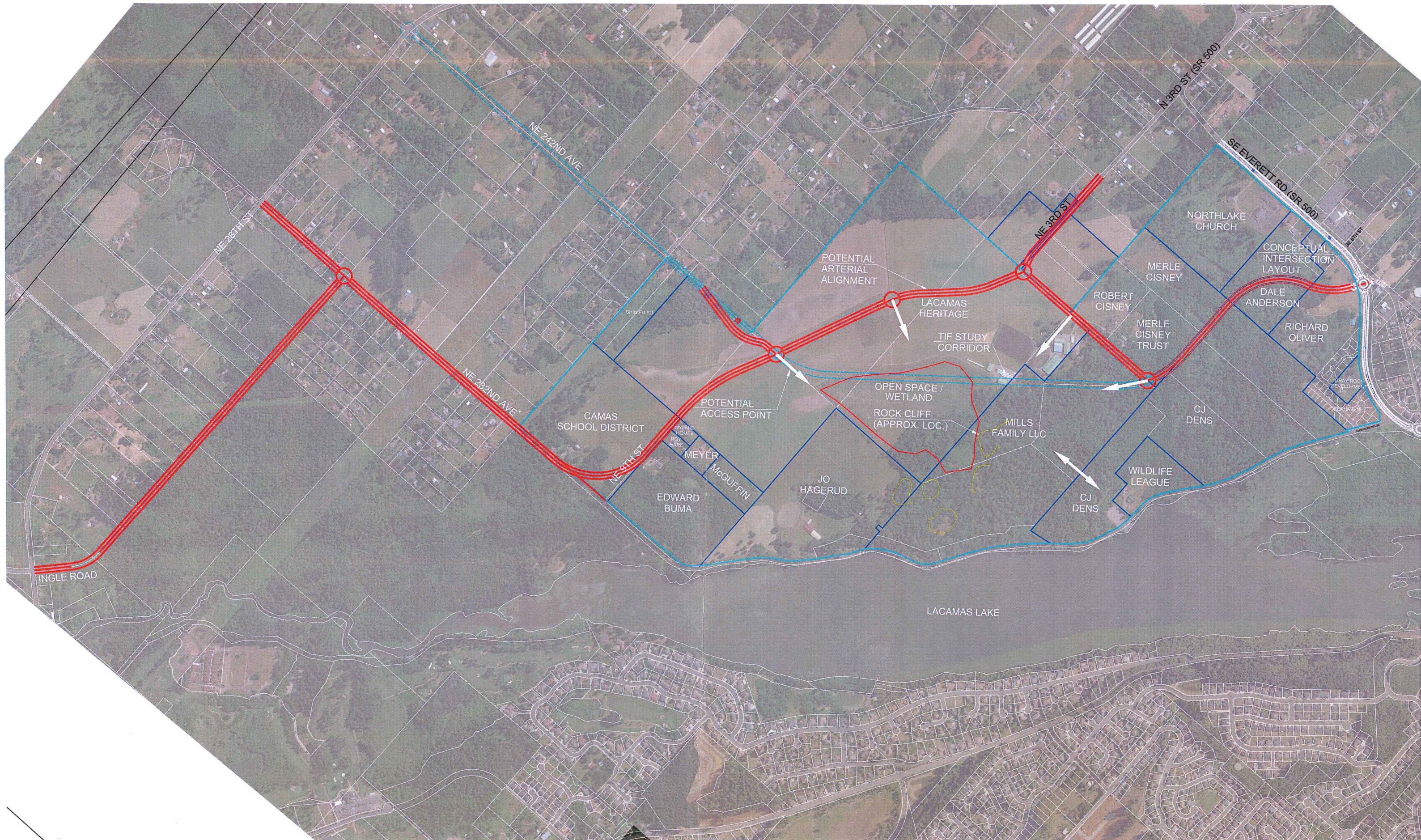
DESIGN SPEED=40MPH Kc=44
POSTED SPEED=35MPH Ks=64



FEMA100-YR FLOOD EL 191.0
ADJUST TO CITY DATUM -3.3
AS SHOWN ON PROFILE EL 187.7
BOTTOM OF BRIDGE EL 188.7







LACAMAS NORTH SHORE AREA CORRIDOR STUDY

