



CITY COUNCIL REGULAR MEETING AGENDA
Tuesday, February 17, 2015, 7:00 PM
City Municipal Center, 616 NE 4th Avenue

NOTE: There are two public comment periods included on the agenda. Anyone wishing to address the City Council may come forward when invited; please state your name and address. Public comments are typically limited to three minutes, and written comments may be submitted to the City Clerk. Special instructions for public comments will be provided at the meeting if a public hearing or quasi-judicial matter is scheduled on the agenda.

I. CALL TO ORDER

II. PLEDGE OF ALLEGIANCE

III. ROLL CALL

IV. PUBLIC COMMENTS

V. CONSENT AGENDA

- A. Approve the minutes of the January 26, 2015 Special Council Meeting, the minutes of the February 2, 2015 Camas City Council Meeting and the Workshop minutes of February 2, 2015.

 [January 26, 2015 Special Council Meeting Minutes - Draft](#)

[February 2, 2015 Workshop Meeting Minutes - Draft](#)

[February 2, 2015 Regular Meeting Minutes - Draft](#)

- B. Approve the claim checks as approved by the Finance Committee.

- C. Authorize Pay Estimate No. 8 to Nutter Corporation for Project S-565 NW 38th Avenue Roadway Improvements, Phase 2 in the amount of \$382,718.72 for work completed from January 1, 2015 thru January 31, 2015. (Submitted by James Carothers)

 [38th Avenue Pay Estimate No. 8](#)

- D. Authorize the Mayor to sign the Proposal by Gray & Osborne, Inc. in the amount of \$9,750 for technical review assistance of the City's Draft Wastewater Treatment Plant National Pollutant Discharge Elimination System (NPDES) Permit as discussed with Council at the February 2, 2015 Workshop. This work was anticipated and included in the 2015 Budget. (Submitted by Steve Wall)

 [NPDES Permit Review - Gray & Osborne Proposal](#)

E. Authorize the Mayor to sign the Proposal by AKS Engineering and Forestry Inc. in the amount of \$85,500 to provide construction administration services and Jones Creek turbidity monitoring associated with Project WS709-E 2015 Jones Creek Timber Harvest. As discussed with Council at the February 2, 2015 Workshop, this project was not included in the 2015 Budget; however, the project is supported by the current rate structure and revenue generated by the timber harvest project. As such, staff would propose to include the amount of the contract in the 2015 spring omnibus budget reconciliation. (Submitted by Steve Wall)

 [Jones 2015 Construction Services Proposal AKS](#)

F. Authorize Pay Estimate No. 7 to McDonald Excavating, Inc. for Project S-566 NW Friberg Street/NW Goodwin Road Improvements in the amount of \$296,357.25 for work through January 31, 2015. (Submitted by James Carothers)

 [Friberg Pay Estimate 7](#)

G. Authorize the write-off of the January Emergency Services (EMS) billings in the amount of \$74,511.53. This is the monthly uncollectable balance of Medicare and Medicaid accounts that are not collectable after receiving payments from Medicare, Medicaid and secondary insurance. (Submitted by Cathy Huber Nickerson)

H. Authorize the release of retainage for Project SS-568 Vactor Waste Facility Upgrade in the amount of \$9,654.93 to Nutter Corporation. All City and State project documentation has been received and verified. (Submitted by James Carothers)

 [Vactor Waste Facility final pay estimate](#)

I. Approve Pay Estimate No. 3 for Project S-589A 2014 Grind & Overlay in the amount of \$2,090 payable to Granite Construction Company. (Submitted by Denis Ryan)

 [Pavement Grind and Overlay Pay Estimate No. 3](#)

J. Authorize the Mayor to sign the Commercial Industrial Custom Project Program Participation Agreement with Clark Public Utilities (CPU) for the City's Wastewater Treatment Plant UV and Blower Control Upgrade Project. The Agreement will allow CPU to provide the City with the estimated \$77,403 energy efficiency incentive for the project that was discussed with the City Council multiple times in 2014. The final incentive amount will be based on actual energy savings to be measured and verified after project completion. (Submitted by Steve Wall)

 [CPU Incentive Agreement - WWTP](#)

NOTE: Any item on the Consent Agenda may be removed from the Consent Agenda for general discussion or action.

VI. NON-AGENDA ITEMS

A. Staff

B. Council

VII. MAYOR

A. Announcements

VIII. MEETING ITEMS

A. Lake Hills Subdivision Final Plat (File no. FP14-05)

Details: Lake Hills Subdivision (file no. SUB12-01) received preliminary plat approval April 6, 2013, to subdivide approximately 18.1 acres of residentially zoned land (R-10) into 53 single-family lots, with 11 lots along NW Lake Road, and 42 lots that will be accessed from Hood Street. The property includes 2.6 acres of open space, and will provide a local connector trail between NW Lake Road and Hood Street.

Presenter: Sarah Fox, Senior Planner

Recommended Action: Staff recommends Council move to approve the Final Plat for Lake Hills Subdivision (FP14-05)

 [Staff Report](#)


[Lake Hills Final Plat Drawing](#)

B. Resolution No. 15-002 Adopting the Camas Vision Statement

Details: Approve the Camas Vision Statement, which is the product of hundreds of community members who participated in Camas 2035 outreach activities. The purpose of this outreach was to create a vision that captured what citizens' value most about Camas today, while planning for what Camas will be in twenty years. The vision statement will act as the cornerstone of the periodic update to the comprehensive plan document, which must be finalized by June 2016.

Presenter: Sarah Fox, Senior Planner

Recommended Action: Staff recommends Council move to approve Resolution No. 15-002

 [Resolution 15-002 - Camas Vision Statement](#)

C. Ordinance No. 15-003 Ratifying and Approving Various Loans with the State of Washington

Details: In updating all the City's debt files, it was discovered twelve loans were not approved by an ordinance with a public hearing preceding the motion. Rather these loans were approved through consent with the City Administrator's signature. It is the opinion of Bond Counsel for the City to correct the procedural approval of the loans with a motion of City Council to ratify the existing loans by an ordinance to be signed by the Mayor. Staff has developed a new process for all future loans and reviewed this new process during the February 2, 2015 Council Workshop.

Presenter: Cathy Huber Nickerson, Finance Director

Recommended Action: Staff recommends Council move to approve Ordinance No. 15-003

 [Ord 15-003 - Ordinance ratifying Loans City of Camas](#)

D. Renewal of "Three Party Agreement"

Details: Since approximately 1978 the cities of Camas and Washougal and East County Fire and Rescue (ECFR), have had a continuous interlocal agreement to provide for emergency medical services response and transport in East Clark County. This document has provided the legal framework for Washougal and ECFR to forward their EMS levy revenue to Camas and for Camas to provide ambulance response and transport in return. The most recent iteration of this agreement expired at the end of 2014. Now, as a "Two Party Agreement," staff is recommending Council approve a new agreement between the City of Camas and ECFR as prepared by counsel. This agreement will be for two years and will contain the same provisions between the parties as the previous version did. ECFR commissioners are also in favor of this new agreement and will be presenting it for approval at their second meeting in February.

Presenter: Nick Swinhart, Fire Chief

Recommended Action: Staff recommends Council move to authorize the Mayor to sign the new agreement

 [ECFR Revised Agreement_2014-2020](#)

E. Ordinance No. 15-004 Amending Section 15.04.030(D)(2) of the Camas Municipal Code (CMC)

Details: Currently the ordinance for the installation of fire alarm systems within the city limits of Camas is in conflict with Washington State Law. The purpose of the proposed revision is to modify the CMC to be aligned with Washington State Statutes.

Presenter: Ron Schumacher, Division Chief / Fire Marshal

Recommended Action: Staff recommends Council move to approve Ordinance No. 15-004

 [Ordinance No. 15-004](#)

[NICET \(National Institute for Certification in Engineering Technologies\) determi](#)

IX. PUBLIC COMMENTS

X. ADJOURNMENT

NOTE: The City of Camas welcomes and encourages the participation of all of its citizens in the public meeting process. A special effort will be made to ensure that a person with special needs has the opportunity to participate. For more information, please call 360.834.6864.



CITY COUNCIL REGULAR MINUTES - DRAFT
Monday, January 26, 2015, 4:30 PM
City Municipal Center, 616 NE 4th Avenue

Special Meeting

I. CALL TO ORDER

Mayor Scott Higgins called the meeting to order at 4:30 p.m.

II. PLEDGE OF ALLEGIANCE

III. ROLL CALL

Present: Greg Anderson, Don Chaney, Tim Hazen, Steve Hogan, Melissa Smith, and Shannon Turk

Excused: Linda Dietzman

Staff: Bernie Bacon, Jennifer Gorsuch and Shawn MacPherson

Press: Heather Acheson, Camas-Washougal Post-Record

IV. MEETING ITEMS

- A. Candidate interviews were conducted for appointment to City of Camas Council Member Ward #2

Mayor commented on the process for the interviews and appointment. All four candidates were interviewed.

V. EXECUTIVE SESSION

- A. Qualifications of applicants for the appointment to City of Camas Council Member Ward #2 were evaluated.

The meeting recessed at 5:42 p.m. for discussion about the qualifications of applicants for the council member position.

The meeting reconvened at 6:12 p.m.

VI. MEETING RESUMES

- A. Appointed Camas City Council Member Ward #2 position for the term of February 1, 2015 thru December 7, 2015.

Council Members Anderson, Hazen, Hogan and Turk voted for Bonnie Carter

Council Members Chaney and Smith voted for Randy Curtis

It was moved by Greg Anderson, seconded by Steve Hogan that Boninie Carter be appointed as Camas City Council Member Ward #2 effective February 1, 2015 and the appointment be approved. The motion carried unanimously.

VII. ADJOURNMENT

The meeting adjourned at 6:17 p.m.

NOTE: The City of Camas welcomes and encourages the participation of all of its citizens in the public meeting process. A special effort will be made to ensure that a person with special needs has the opportunity to participate. For more information, please call 360.834.6864.



CITY COUNCIL WORKSHOP MINUTES - DRAFT
Monday, February 2, 2015, 4:30 PM
City Municipal Center, 616 NE 4th Avenue

I. CALL TO ORDER

Mayor Scott Higgins called the meeting to order at 4:30 p.m.

II. ROLL CALL

Present: Greg Anderson, Bonnie Carter, Don Chaney, Tim Hazen, Steve Hogan, and Shannon Turk

Excused: Melissa Smith

Staff: Bernie Bacon, Phil Bourquin, Pete Capell, Curleigh Carothers, Sarah Fox, Jim Hodges, Cathy Huber Nickerson, Eric Levison, Robert Maul, Nick Swinhart, and Steve Wall

Press: Heather Acheson, Camas-Washougal Post-Record

III. PUBLIC COMMENTS

No one from the public wished to speak.

IV. WORKSHOP TOPICS

A. 2014 Financial Review

Details: This presentation reviewed the financial performance of the City from the perspective of budget to actual, investment performance and status of short and long term debt. The presentation also provided an economic overview both nationally and regionally to provide context as well as provide the outlook for the next year.

Presenter: Cathy Huber Nickerson, Finance Director

 [Financial Performance 2014 4th Qtr](#)

Huber summarized the informational document. Discussion ensued.

B. 2015 Limited General Obligation Bonds Discussion

Details: This presentation discussed the potential sizing of the 2015 Limited General Obligation Bonds approved by City Council by Ordinance No. 2710 on July 21, 2014. Next steps were also discussed.

Presenter: Cathy Huber Nickerson, Finance Director

 [2015 Limited General Obligation Bond](#)

This item will be placed on the February 17, 2015 Council Workshop Agenda.

C. City of Camas Utility Billing Proposed Changes - Phase II

Details: This presentation reviewed the next round of proposed changes to utility billing practices including budget billing, low income assistance, filing of property liens and abandonment of service. Other items discussed included possible new fees and elimination of payment extensions.

Presenter: Cathy Huber Nickerson, Finance Director

 [Utility Code Changes Phase 2](#)

A draft ordinance will be placed on the February 17, 2015 Consent Agenda for Council's consideration.

D. Ordinance No.15-003 Ratifying and Approving Various Loans with the State of Washington

Details: In updating all the City's debt files, it was discovered twelve loans were not approved by an ordinance with a public hearing preceeding the motion. Rather these loans were approved through consent with the City Administrator's signature. It is the opinion of Bond Counsel for the City to correct the procedural approval of the loans with a motion of City Council to ratify the existing loans by an ordinance to be signed by the Mayor. Staff has developed a new process for all future loans and reviewed this new process during the Council Workshop.

Presenter: Cathy Huber Nickerson, Finance Director


 [Ord 15-003 - Ordinance ratifying LoansCity of Camas](#)

The Ordinance No. 15-003 will be placed on the February 17, 2015 Consent Agenda for Council's consideration.

E. Lacamas Lake Water Quality Status

Details: Council requested an update on the Lacamas Lake water quality status and testing. Currently there is no active testing on Lacamas Lake or tributary systems. The last update by Clark County was the Monitoring Report Lacamas Lake Annual Data Summary for 2007 (see attached). In 2010-11, the Department of Ecology gathered data in the Lacamas Basin tributaries to support work on developing a Total Maximum Daily Load (TMDL) for the basin. Discussion with Ecology anticipates that the TMDL will not be ready for public involvement and comment until 2017. Based on a discussion with Clark County staff, an effort similar to the 2007 study would cost in the neighborhood of \$10,000 to \$15,000 and may be helpful in developing trends in water quality over time. County staff noted that there is an active Vancouver Lake stakeholder group, which has similar concerns on algae, but there is not currently a stakeholder group for Lacamas Lake.

Presenter: Eric Levison, Retiring Public Works Director


-  [2004 Lacamas Lake Nutrient Loading and In-Lake Condition](#)
- [2007 Lacamas Lake Monitoring summary](#)
- [2011 Lacamas Creek Water Quality Study](#)

Levison summarized the informational documents. Discussion ensued.

F. Department of Ecology Water Quality Standards Rulemaking

Details: The Department of Ecology has initiated a rule making process to update Washington Administrative Code (WAC) 173-201A to include Human Health Criteria (HHC) for 96 toxic chemicals to protect human health. The rule update includes new limits for the 96 toxic substances and implementation tools for Ecology to use in conjunction with the National Pollutant Discharge Elimination System (NPDES). This rule will affect all NPDES permitted dischargers, both public and private, for wastewater and stormwater. The Governor is also proposing legislation to work toward removing toxic substances at the source. These changes are driven by Federal Clean Water requirements. Staff provided an update on the rulemaking process.

Presenter: Eric Levison, Retiring Public Works Director

-  [Water Quality Standards Rule Making](#)
- [Water Quality Standards Update Background](#)
- [Water Quality Standards Update Appendix B Chemicals](#)

Levison summarized the informational documents. Discussion ensued.

- G. Wastewater Treatment Plant NPDES Permit Update and Consultant Services Details: The City has recently received a Draft NPDES Permit from the Department of Ecology for the wastewater treatment plant. Staff has begun a review of the draft permit and provided the City Council with a brief update on key provisions. A copy of the cover letter from Ecology is attached for reference that briefly describes the anticipated process Ecology will use to issue a final permit. Additionally, as proposed and discussed with Council at the October 20, 2014 Workshop, Gray & Osborne is assisting staff with a technical review of the draft permit and has provided the City with the attached Proposal for NPDES Permit Review assistance.

Presenter: Steve Wall, Public Works Director

 [NPDES Permit Review - G&O Proposal](#)

[Draft NPDES Permit Cover Letter](#)

The Gray & Osborne NPDES Permit Review Assistance Proposal will be placed on the February 17, 2015 Consent Agenda for Councils consideration.

- H. Jones Creek 2015 Timber Sale Professional Services Proposal
Details: The City opened bids for the Jones Creek 2015 Timber Sale on January 15, 2015. The highest bidder was High Cascade, Inc. in an amount of \$468,061. Additionally, AKS Engineering and Forestry has submitted the attached proposal in the amount of \$85,500 to provide construction administration and turbidity monitoring services for the project.

Presenter: Steve Wall, Public Works Director

 [Jones 2015 Construction Services Proposal AKS](#)

This item was also placed on the February 2, 2015 Consent agenda for Councils consideration. The AKS Engineering and Forestry Proposal will be placed on the February 17, 2015 Consent agenda for Council's consideration.

- I. Public Works Miscellaneous and Updates

There were no miscellaneous items or updates.

- J. Lake Hills Subdivision Final Plat (File #FP14-05)
Details: Lake Hills Subdivision (file #SUB12-01) received preliminary plat approval April 6, 2013; to subdivide approximately 18.1 acres of residentially zoned land (R-10) into 53 single-family lots, with 11 lots along NW Lake Road and 42 lots that will be accessed from Hood Street. The property includes 2.6 acres of open space and will provide a local connector trail between NW Lake Road and Hood Street.

Presenter: Sarah Fox, Senior Planner

 [Lake Hills Final Plat Drawing](#)

This item was also placed on the February 2, 2015 Consent agenda for Council's consideration.

K. 2035 Vision Statement

Details: Over the past six months, under the guidance of the Vision Steering Committee, hundreds of community members have participated in two rounds of Camas 2035 outreach activities. The purpose of the first round was to identify Camas' strengths and understand what citizens value about Camas today. The purpose of the second round of outreach efforts was to validate the draft vision statement. On January 8, 2015, at the second vision summit, the participants discussed the survey results, and affirmed that the draft vision was a true reflection of their input. At the Planning Conference, Council discussed the vision statement and recommended amendments. The attached statement includes those recommendations.

Presenter: Phil Bourquin, Community Development Director; and Sarah Fox, Senior Planner

 [Camas Vision Revised](#)

[Camas2035 Outreach Summary 1-6-15](#)

A resolution to adopt the 2035 Vision Statement will be placed on the February 17, 2015 Consent Agenda for Council's consideration.

L. 2015 ADA Ramp and Sidewalk Improvements

Details: Bids were open on Tuesday, January 27, 2015, for Project S-598 2015 ADA Ramp and Sidewalk Improvements. The successful low bidder is Schmid and Sons, Inc. in the amount of \$21,676.21. This project addresses ADA access requests that have been identified by citizens of Camas. Included in these improvements are replacement of rough sidewalks adjacent to Crown Park on NE 15th Avenue and ADA parking and access improvements at the Oak Park Neighborhood Park on SE 8th Avenue. \$15,000 is budgeted for ADA improvements in 2015. The finance department will propose the reconciliation of the additional cost in an upcoming omnibus.

Presenter: James Carothers, Engineering Manager

 [215 ADA Improvements Bids](#)

[215 ADA Improvements Plan View](#)

This item was also placed on the February 2, 2015 Consent Agenda for Council's consideration.

M. NW Friberg and Goodwin Street Improvements

Details: Change Order No. 3 for project S-566 NW Friberg and Goodwin Street Improvements includes 13 additional required items totaling \$68,732.37, to the Contractor, McDonald Excavating, Inc. These items include an upgrade to the electrical service for the traffic signal, installation of over 15,000 square yards of geotechnical fabric to reinforce the underlying subgrade, the relocation of several utilities to accommodate a traffic signal pole, installation of irrigation piping not shown in the plans, extra saw-cutting above the bid quantity, and additional gabion rock, pipe fittings, and other miscellaneous items outside the scope of the original bid. A more detailed explanation of these additional items is provided on the attached change order. Also attached is a funding memorandum with the updated expenditures for the project. While the change orders total approximately \$156,000 or 3.8% of the original contract amount, the bid item overruns will total approximately \$291,000. The majority of these bid overruns are due to an underestimated amount of flagging time and the overexcavation and backfill of unsuitable roadway base. The overall additional costs above the bid items is nearly 10% of the original construction bid awarded. Payment for the additional cost of this project will be proposed as part of the general obligation bond to be presented to Council by the Finance Department.

Presenter: James Carothers, Engineering Manager

 [Friberg Change Order No. 3](#)

[Friberg Project Funding Memo 1-27-15](#)

This item was also placed on the February 2, 2015 Consent Agenda for Council's consideration.

N. Community Development Miscellaneous and Updates

There were no miscellaneous items or updates.

O. City Administrator Miscellaneous Updates and Scheduling

Capell shared that Camas-Washougal Babe Ruth did receive the "Baseball Tomorrow Fund" grant and work has begun on the new lighting system and scoreboard.

V. COUNCIL COMMENTS AND REPORTS

Council comments were deferred to the regular meeting.

VI. PUBLIC COMMENTS

No one from the public wished to speak.

VII. ADJOURNMENT

The meeting adjourned at 6:28 p.m.

NOTE: The City of Camas welcomes and encourages the participation of all of its citizens in the public meeting process. A special effort will be made to ensure that a person with special needs has the opportunity to participate. For more information, please call 360.834.6864.



CITY COUNCIL REGULAR MINUTES - DRAFT
Monday, February 2, 2015, 7:00 PM
City Municipal Center, 616 NE 4th Avenue

I. CALL TO ORDER

Mayor Scott Higgins called the meeting to order at 7:00 p.m.

II. PLEDGE OF ALLEGIANCE

III. ROLL CALL

Present: Greg Anderson, Bonnie Carter, Don Chaney, Tim Hazen, Steve Hogan, and Shannon Turk

Excused: Melissa Smith

Staff: Bernie Bacon, Phil Bourquin, Pete Capell, Cathy Huber Nickerson, Eric Levison, Robert Maul, Roger Knapp, and Steve Wall

Press: There was no one from the press present

A. Oath of Office (this agenda item was moved up on the agenda)

The City Attorney administered the oath of office to new City Council Member, Bonnie Carter.

IV. PUBLIC COMMENTS

Joe Levesque, 2682 NW Norwood Street, Camas, commented on his proposed solutions to national financial problems.

Dan Durringer, 1527 NE Franklin Street, Camas, commented on Franklin Street's pavement and sewer conditions.

V. CONSENT AGENDA

A. Approved the minutes of the January 16 and 17, 2015 City of Camas Annual Planning Conference and the January 17, 2015 Special Council Meeting.

 [011615 Planning Conference Minutes](#)

[011715 Planning Conference Minutes](#)

[011715 Special Council Meeting Minutes - DRAFT](#)

B. Approved claim checks numbered 124656-124812, in the amount of \$272,288.95.


- C. Authorized Bid Award for Project WS-709E Jones 2015 Timber Sale to the responsive high bidder, High Cascade, Inc., in the amount of \$468,061.00. The award of this contract provides for the sale of merchantable timber as described in the Boulder Creek and Jones Creek Watershed Forest Management Plan. (Submitted by Steve Wall)

 [WS-709E bid tab](#)


- D. Approved final Pay Estimate to JWC General Contractor, LLC for Project P-906 Library Window Repair in the amount of \$11,464.38. (Submitted by Denis Ryan)

 [P-906 Final Pay Estimate](#)

- E. Awarded Project S-598 2015 ADA Ramp and Sidewalk Improvements to Schmid and Sons, Inc., in the amount of \$21,676.21. This project addresses ADA access requests that have been identified by citizens of Camas. Included in these improvements are replacement of rough sidewalk adjacent to Crown Park on NE 15th Avenue and ADA parking and access improvements at the Oak Park Neighborhood Park on SE 8th Avenue. (Submitted by James Carothers)

 [2015 ADA Improvements Bids](#)
[2015 ADA Improvements Plan View](#)

- F. Authorized Pay Estimate No. 3 Final to Green Construction Inc. for Project S-583 NW 18th Ave. Bike & Pedestrian Trail Link, in the amount of \$0.00 and accept project as complete. Previously withheld retainage was paid to the contractor on December 31, 2014, due to a Washington State Department of Transportation requirement on federally funded projects. An inadvertent overpayment of 0.41 acre was made for Bid Item No. 8 on Pay Estimate No. 2. The result of this overpayment was a negative balance due to the contractor. This negative balance has been reimbursed by the contractor as noted on this pay estimate. (Submitted by James Carothers)

 [S-583 Pay Est. No. 3 Final](#)
[Retainage Payment](#)
[Contractor reimbursement](#)

- G. Authorized the Mayor to sign Change Order No. 3 for required additional work on Project S-566 NW Friberg Street/NW Goodwin Road Improvements to McDonald Excavating Inc. in the amount of \$68,732.37 and to add 33 additional working days. (Submitted by James Carothers)

 [Friberg Change Order No. 3](#)
[Friberg Project Funding Memo 1-27-15](#)

VI. NON-AGENDA ITEMS

- A. Staff

There were no comments from staff.

B. Council

Council Members welcomed Bonnie Carter to the Council.

Hogan said First Friday is scheduled for this week. He also shared that he and Council Member Anderson attended the Downtown Camas Association's (DCA) Annual Retreat. DCA is now federally recognized as a Washington State Main Street Program member.

Hazen said the Parks Commission completed their "2014 Parks, Recreation and Open Space Comprehensive Plan" and it is available on the City's website under the Parks & Recreation Department. He commented on the status of Camas' newest park (currently referred to as Drewfs Farm) and the Washougal River Greenway project. Hazen also said the Parks Commission would like to be more engaged with Council in trail review processes and community center discussions; a recommendation was made to form a council sub-committee, to include the City Administrator, as a part of this year's work plan to update Municipal Codes and perform a review of all boards and commissions.

Turk said the next Planning Commission meeting is February 18, 2015 (which is a Wednesday due to the moved council meeting). She also shared that she will be in the 2nd Story Gallery at the Library after 6 p.m. this First Friday.

Chaney commented on House Bill 1314. Mayor responded that the City is monitoring it.

Anderson commented on East County Fire and Rescue's recent transitions. He said he volunteered and attended Camas School District's Strategic Planning Focus Group. He also met with citizens regarding C-Tran.

VII. MAYOR

A. Announcements

Mayor said the ribbon-cutting for Flutes & Rocks will take place this First Friday at 5:30 p.m.

B. Library Board Appointments

Mayor Scott Higgins appointed Laura Felter for a five-year term expiring December 31, 2019, and Jennifer Colbert for an unexpired term ending December 31, 2018, to the Library Board of Trustees.

It was moved by Shannon Turk, seconded by Steve Hogan to accept the Mayor's recommendations for appointments as listed. The motion carried unanimously.

VIII. MEETING ITEMS

There were no regular meeting items.

IX. PUBLIC COMMENTS

No one from the public wished to speak.

X. ADJOURNMENT

The meeting was adjourned at 7:50 p.m.

NOTE: The City of Camas welcomes and encourages the participation of all of its citizens in the public meeting process. A special effort will be made to ensure that a person with special needs has the opportunity to participate. For more information, please call 360.834.6864.

CITY OF CAMAS PROJECT NO. S-565 DESCRIPTION: NW 38th Avenue Roadway Improvements, Ph. 2 PAY ESTIMATE #8 Council Meeting Date: February 17, 2015 Work Period Date: January 1, 2015 - January 31, 2015		NUTTER CORPORATION 7211 NE 43rd Avenue, Vancouver, WA 98661 Phone: (360) 573-2000 Original Contract Total: \$4,219,597.22 (Includes Sales Tax Amount: \$6,646.42) ORIGINAL QUANTITIES, ETC.				STP / TIB / REET FUNDING		WATER / SEWER ACCOUNT		Previous Estimate Totals		Current Estimate Totals		Totals to Date	
ITEM NO.	DESCRIPTION	UNIT	ORIGINAL QUANTITY	UNIT PRICE	CONTRACT TOTAL	Quantity	Amount	Quantity	Amount	QUANTITY PREVIOUS	TOTAL PREVIOUS	QUANTITY THIS ESTIMATE	TOTAL THIS ESTIMATE	QUANTITY TO DATE	TOTAL TO DATE
Schedule A															
A 1	Mobilization	LS	1.0	\$314,000.00	\$314,000.00	1.00	\$314,000.00			1.00	\$314,000.00			1.00	\$314,000.00
A 2	Roadway Surveying	LS	1.0	\$30,000.00	\$30,000.00	1.00	\$30,000.00			1.00	\$30,000.00			1.00	\$30,000.00
A 3	SPCC Plan	LS	1.0	\$1,000.00	\$1,000.00	1.00	\$1,000.00			1.00	\$1,000.00			1.00	\$1,000.00
Traffic Control															
A 4	Traffic Control Supervisor	LS	1.0	\$25,000.00	\$25,000.00	0.72	\$17,884.79			0.72	\$17,884.79			0.72	\$17,884.79
A 5	Flaggers and Spotters	HR	2,350.0	\$49.00	\$115,150.00	2,712.00	\$132,888.00			2,469.50	\$121,005.50	242.50	\$11,882.50	2,712.00	\$132,888.00
A 6	Other Traffic Control Labor	HR	200.0	\$49.00	\$9,800.00	310.50	\$15,214.50			281.00	\$13,769.00	29.50	\$1,445.50	310.50	\$15,214.50
A 7	Construction Signs, Class A	SF	120.0	\$24.00	\$2,880.00	160.00	\$3,840.00			160.00	\$3,840.00			160.00	\$3,840.00
A 8	Portable Changeable Message Sign	HR	336.0	\$15.00	\$5,040.00	190.00	\$2,850.00			190.00	\$2,850.00			190.00	\$2,850.00
A 9	Other Temporary Traffic Control	LS	1.00	\$7,000.00	\$7,000.00										
Grading															
A 10	Clearing and Grubbing	LS	1.0	\$75,000.00	\$75,000.00	1.00	\$75,000.00			1.00	\$75,000.00			1.00	\$75,000.00
A 11	Removal of Structures and Obstructions	LS	1.0	\$40,000.00	\$40,000.00	1.00	\$40,000.00			1.00	\$40,000.00			1.00	\$40,000.00
A 12	Roadway Excavation, Incl. Haul	CY	3,000.0	\$18.00	\$54,000.00	3,009.05	\$54,162.90			3,009.05	\$54,162.90			3,009.05	\$54,162.90
A 13	Unsuitable Foundation Excavation, Incl. Haul	CY	1,600.0	\$9.50	\$15,200.00										
A 14	Gravel Borrow, Incl. Haul (CO#1 Adjusted final quantity to 4,285 cy)	CY	14,300.0	\$18.50	\$264,550.00	4,285.00	\$79,272.50			4,285.00	\$79,272.50			4,285.00	\$79,272.50
A 15	Ditch Excavation, Incl. Haul	CY	550.0	\$25.00	\$13,750.00	543.00	\$13,575.00			543.00	\$13,575.00			543.00	\$13,575.00
A 16	Channel Excavation, Incl. Haul	CY	29,000.0	\$8.50	\$246,500.00	28,805.00	\$244,842.50			28,805.00	\$244,842.50			28,805.00	\$244,842.50
A 17	Stormwater Facility Excavation, Incl. Haul	CY	10,000.0	\$8.50	\$85,000.00	9,999.40	\$84,994.90			9,999.40	\$84,994.90			9,999.40	\$84,994.90
A 18	Construction Geotextile for Separation	SY	235.0	\$3.00	\$705.00	288.80	\$866.40			288.80	\$866.40			288.80	\$866.40
Bases															
A 19	Crushed Surfacing Base Course	TON	11,020.0	\$20.00	\$220,400.00	11,578.19	\$231,563.80			11,578.19	\$231,563.80			11,578.19	\$231,563.80
A 20	In Place Cement Amended Base	SY	6,450.0	\$3.40	\$21,930.00	7,038.00	\$23,929.20			7,038.00	\$23,929.20			7,038.00	\$23,929.20
A 21	Cement for CAB	TON	193.0	\$116.00	\$22,388.00	189.47	\$21,978.52			189.47	\$21,978.52			189.47	\$21,978.52
Surface Treatment and Pavements															
A 22	HMA CL 1/2 In. PG 64-22	TON	4,040.0	\$76.00	\$307,040.00	1,912.20	\$145,327.20			1,912.20	\$145,327.20			1,912.20	\$145,327.20
A 23	Preparation of Existing Surfaces	TON	4.0	\$570.00	\$2,280.00										
A 24	HMA for Approach CL 1/2 In. PG 64-22	TON	105.0	\$85.00	\$8,925.00	114.03	\$9,692.55			114.03	\$9,692.55			114.03	\$9,692.55
Structures															
A 25	Precast Reinf. Conc. Three Sided Structure No. 1	LS	1.0	\$235,000.00	\$235,000.00	0.55	\$129,250.00			0.45	\$105,750.00	0.10	\$23,500.00	0.55	\$129,250.00
A 26	Precast Reinf. Conc. Three Sided Structure No. 2	LS	1.0	\$230,000.00	\$230,000.00	0.45	\$103,500.00			0.45	\$103,500.00			0.45	\$103,500.00
Storm Sewer, Sanitary Sewer, and Water Mains															
A 27	Underdrain Pipe, 8 In. Diam.	LF	390.0	\$43.00	\$16,770.00	433.00	\$18,619.00			433.00	\$18,619.00			433.00	\$18,619.00
A 28	Aluminized Steel Culvert Arch Pipe 41-In. x 53-In. Diam.	LF	312.0	\$140.00	\$43,680.00	312.00	\$43,680.00			312.00	\$43,680.00			312.00	\$43,680.00
A 29	Tapered End Sect with Debris Barrier 12 In. Diam.	EA	2.0	\$650.00	\$1,300.00	2.00	\$1,300.00			2.00	\$1,300.00			2.00	\$1,300.00
A 30	Corrugated Polyethylene Storm Sewer Pipe, 10 In. Diam.	LF	950.0	\$46.00	\$43,700.00	909.00	\$41,814.00			909.00	\$41,814.00			909.00	\$41,814.00
A 31	Corrugated Polyethylene Storm Sewer Pipe, 12 In. Diam.	LF	2,735.0	\$48.00	\$131,280.00	2,703.00	\$129,744.00			2,638.00	\$126,624.00	65.00	\$3,120.00	2,703.00	\$129,744.00
A 32	Corrugated Polyethylene Storm Sewer Pipe, 18 In. Diam.	LF	400.0	\$55.00	\$22,000.00	454.00	\$24,970.00			454.00	\$24,970.00			454.00	\$24,970.00
A 33	Testing Storm Sewer Pipe	LF	4,020.0	\$2.00	\$8,040.00	3,862.00	\$7,724.00			3,862.00	\$7,724.00			3,862.00	\$7,724.00
A 34	Manhole 48 In. Diam. Type 1	EA	14.0	\$2,500.00	\$35,000.00	14.00	\$35,000.00			14.00	\$35,000.00			14.00	\$35,000.00
A 35	Manhole 60 In. Diam. Flow Control	EA	2.0	\$5,200.00	\$10,400.00	1.00	\$5,200.00			1.00	\$5,200.00			1.00	\$5,200.00
A 36	Manhole 96 In. Diam. Type 3, Stormwater Filtration	EA	2.0	\$39,000.00	\$78,000.00	2.00	\$78,000.00			2.00	\$78,000.00			2.00	\$78,000.00
A 37	Curb Inlet	EA	13.0	\$1,800.00	\$23,400.00	13.00	\$23,400.00			13.00	\$23,400.00			13.00	\$23,400.00
A 38	Double Curb Inlet	EA	16.0	\$3,100.00	\$49,600.00	16.00	\$49,600.00			16.00	\$49,600.00			16.00	\$49,600.00
A 39	Catch Basin Type 1	EA	1.0	\$1,300.00	\$1,300.00	1.00	\$1,300.00			1.00	\$1,300.00			1.00	\$1,300.00
A 40	Adjust Manhole	EA	2.0	\$500.00	\$1,000.00										
A 41	Adjust Catch Basin	EA	2.0	\$400.00	\$800.00										
A 42	Removal and Replacement of Unsuitable Material	CY	310.0	\$65.00	\$20,150.00	12.70	\$825.50			12.70	\$825.50			12.70	\$825.50
A 43	Shoring	LF	4,725.0	\$2.00	\$9,450.00	3,408.00	\$6,816.00			3,408.00	\$6,816.00			3,408.00	\$6,816.00
A 44	Adjust Valve Box	EA	7.0	\$220.00	\$1,540.00										
Erosion Control and Water Pollution Control															
A 45	ESC Lead	DAY	50.0	\$60.00	\$3,000.00	21.00	\$1,260.00			21.00	\$1,260.00			21.00	\$1,260.00
A 46	Seed Mix B	AC	2.6	\$2,900.00	\$7,540.00										
A 47	Stabilized Construction Entrance	SY	300.0	\$20.00	\$6,000.00	381.50	\$7,630.00			381.50	\$7,630.00			381.50	\$7,630.00
A 48	Street Cleaning	HR	60.0	\$130.00	\$7,800.00	8.00	\$1,040.00			8.00	\$1,040.00			8.00	\$1,040.00
A 49	Silt Fence	LF	6,960.0	\$2.00	\$13,920.00	6,980.00	\$13,960.00			6,980.00	\$13,960.00			6,980.00	\$13,960.00
A 50	High Visibility Fence	LF	2,865.0	\$2.00	\$5,730.00	2,380.00	\$4,760.00			2,380.00	\$4,760.00			2,380.00	\$4,760.00
A 51	Inlet Protection	EA	45.0	\$60.00	\$2,700.00	53.00	\$3,180.00			53.00	\$3,180.00			53.00	\$3,180.00

CITY OF CAMAS PROJECT NO. S-565 DESCRIPTION: NW 38th Avenue Roadway Improvements, Ph. 2		NUTTER CORPORATION 7211 NE 43rd Avenue, Vancouver, WA 98661 Phone: (360) 573-2000 Original Contract Total: \$4,219,597.22 (Includes Sales Tax Amount: \$6,646.42) ORIGINAL QUANTITIES, ETC.				STP / TIB / REET FUNDING		WATER / SEWER ACCOUNT		Previous Estimate Totals		Current Estimate Totals		Totals to Date	
PAY ESTIMATE #8 Council Meeting Date: February 17, 2015 Work Period Date: January 1, 2015 - January 31, 2015		UNIT	ORIGINAL QUANTITY	UNIT PRICE	CONTRACT TOTAL	Quantity	Amount	Quantity	Amount	QUANTITY PREVIOUS	TOTAL PREVIOUS	QUANTITY THIS ESTIMATE	TOTAL THIS ESTIMATE	QUANTITY TO DATE	TOTAL TO DATE
A 52	Wattle	LF	100.0	\$7.00	\$700.00	25.00	\$175.00			25.00	\$175.00			25.00	\$175.00
Streambank Stabilization															
A 53	Work Area Isolation	LS	1.0	\$60,000.05	\$60,000.05	0.25	\$15,000.01			0.25	\$15,000.01			0.25	\$15,000.01
A 54	Weir Log	EA	12.0	\$1,400.00	\$16,800.00	13.00	\$18,200.00			13.00	\$18,200.00			13.00	\$18,200.00
A 55	Log with Root Wad	EA	50.0	\$1,200.00	\$60,000.00	50.00	\$60,000.00			50.00	\$60,000.00			50.00	\$60,000.00
A 56	Streambed Gravel	TN	1,660.0	\$43.00	\$71,380.00	1,211.64	\$52,100.52			1,211.64	\$52,100.52			1,211.64	\$52,100.52
A 57	Stream Boulder, 18 In. Diam.	TON	40.0	\$130.00	\$5,200.00	54.04	\$7,025.20			54.04	\$7,025.20			54.04	\$7,025.20
A 58	Stream Boulder, 24 In. Diam.	TON	60.0	\$130.00	\$7,800.00	50.91	\$6,618.30			50.91	\$6,618.30			50.91	\$6,618.30
A 59	Woven Coir Matting	SY	8,820.0	\$3.30	\$29,106.00	6,859.11	\$22,635.06			6,859.11	\$22,635.06			6,859.11	\$22,635.06
A 60	Non-Woven Coir Matting	SY	8,820.0	\$2.75	\$24,255.00	6,859.11	\$18,862.55			6,859.11	\$18,862.55			6,859.11	\$18,862.55
A 61	Light Loose Riprap	TON	290.0	\$55.00	\$15,950.00	398.51	\$21,918.05			398.51	\$21,918.05			398.51	\$21,918.05
A 62	Quarry Spalls	TON	33.0	\$40.00	\$1,320.00	199.91	\$7,996.40			199.91	\$7,996.40			199.91	\$7,996.40
Landscaping															
A 63	Landscaping	LS	1.0	\$147,000.00	\$147,000.00	0.95	\$139,650.00					0.95	\$139,650.00	0.95	\$139,650.00
A 64	Irrigation System, Design/Build	LS	1.0	\$168,000.00	\$168,000.00	0.59	\$99,120.00			0.31	\$52,080.00	0.28	\$47,040.00	0.59	\$99,120.00
Wetland Mitigation Planting															
A 65	Wetland Mitigation	LS	1.0	\$114,000.00	\$114,000.00	0.85	\$96,900.00			0.17	\$19,380.00	0.68	\$77,520.00	0.85	\$96,900.00
Traffic															
A 66	Cement Conc. Traffic Curb	LF	2,215.0	\$10.00	\$22,150.00	2,224.00	\$22,240.00			2,224.00	\$22,240.00			2,224.00	\$22,240.00
A 67	Cement Conc. Traffic Curb and Gutter	LF	5,510.0	\$10.00	\$55,100.00	5,521.00	\$55,210.00			5,521.00	\$55,210.00			5,521.00	\$55,210.00
A 68	Cement Concrete Driveway Entrance, Type 1	SY	55.0	\$70.00	\$3,850.00	57.00	\$3,990.00			57.00	\$3,990.00			57.00	\$3,990.00
A 69	Cement Concrete Driveway Entrance, Type 3	SY	300.0	\$60.00	\$18,000.00	338.00	\$20,280.00			338.00	\$20,280.00			338.00	\$20,280.00
A 70	Raised Pavement Marker Type 2	HUND	1.5	\$760.00	\$1,102.00										
A 71	Black Vinyl Coated Chainlink Fence Type 3	LF	94.0	\$29.00	\$2,726.00										
A 72	Cement Conc. Sidewalk	SY	4,120.0	\$38.00	\$156,560.00	3,895.00	\$148,010.00			3,625.00	\$137,750.00	270.00	\$10,260.00	3,895.00	\$148,010.00
A 73	Cement Conc. Curb Ramp Type 1	EA	8.0	\$1,100.00	\$8,800.00	8.00	\$8,800.00			8.00	\$8,800.00			8.00	\$8,800.00
A 74	Cement Conc. Curb Ramp Type Directional	EA	2.0	\$1,200.00	\$2,400.00	2.00	\$2,400.00			2.00	\$2,400.00			2.00	\$2,400.00
A 75 Illumination System															
Material-on-Hand (MOH) for Illumination System		Amount paid based on supplied invoices from NE Electric								0.06	\$8,779.28	-0.06	(\$8,779.28)		
A 76	Traffic Signal System Modification - NW 38th Ave/ NW Parker St	LS	1.0	\$44,000.00	\$44,000.00	0.55	\$24,200.00			0.23	\$10,120.00	0.32	\$14,080.00	0.55	\$24,200.00
A 77	Permanent Signing	LS	1.0	\$3,500.00	\$3,500.00	1.00	\$3,500.00			1.00	\$3,500.00			1.00	\$3,500.00
A 78	Paint Line	LF	5,655.0	\$0.25	\$1,413.75										
A 79	Painted Wide Lane Line	LF	5,960.0	\$0.35	\$2,086.00										
A 80	Plastic Traffic Arrow	EA	14.0	\$100.00	\$1,400.00										
A 81	Plastic Crosswalk Line	SF	180.0	\$5.00	\$900.00										
A 82	Plastic Stop Line	LF	46.0	\$5.00	\$230.00										
A 83	Plastic Bicycle Lane Symbol	EA	13.0	\$260.00	\$3,380.00										
Other Items															
A 84	Joint Utility Trench, Incl. Backfill	LF	3,120.0	\$9.00	\$28,080.00	2,992.50	\$26,932.50			2,992.50	\$26,932.50			2,992.50	\$26,932.50
Subtotal					\$4,113,826.80		\$3,283,218.85			\$2,900,500.13		\$382,718.72		\$3,283,218.85	
Schedule A Change Orders															
CO 1	Item A - Bid Item A14 to be measured by TN, paid by CY, conversion factor 1.6 TN/CY.														
	Item B - Bid Item A14 original bid quantity adjusted from 14,300 CY to 4,285 CY. Original unit cost to remain at \$18.50/CY for the adjusted quantity.														
	Item C - Common Borrow/Native Material to be used in-place of Bid Item A14. Remaining balance of 10,015 CY to be paid at \$8.50/CY.	CY	10,015.0	\$8.50		10,015.40	\$85,130.90			10,015.40	\$85,130.90			10,015.40	\$85,130.90
Subtotal						\$85,130.90				\$85,130.90				\$85,130.90	
Schedule B - Plant Establishment															
B 1	1-Year Plant Establishment Performance Bond-Landscape Plant	LS	1.00	\$10,000.00	\$10,000.00										
B 2	1-Year Plant Establishment Performance Bond-Wetland Mitigation	LS	1.00	\$10,000.00	\$10,000.00										
Subtotal					\$20,000.00										

CITY OF CAMAS PROJECT NO. S-565 DESCRIPTION: NW 38th Avenue Roadway Improvements, Ph. 2 PAY ESTIMATE #8 Council Meeting Date: February 17, 2015 Work Period Date: January 1, 2015 - January 31, 2015	NUTTER CORPORATION 7211 NE 43rd Avenue, Vancouver, WA 98661 Phone: (360) 573-2000 Original Contract Total: \$4,219,597.22 (Includes Sales Tax Amount: \$6,646.42) ORIGINAL QUANTITIES, ETC.	STP / TIB / REET FUNDING	WATER / SEWER ACCOUNT	Previous Estimate Totals	Current Estimate Totals	Totals to Date
---	--	-----------------------------	--------------------------	--------------------------	-------------------------	----------------

ITEM NO.	DESCRIPTION	UNIT	ORIGINAL	UNIT	CONTRACT	Quantity	Amount	Quantity	Amount	QUANTITY	TOTAL	QUANTITY	TOTAL	QUANTITY	TOTAL
			QUANTITY	PRICE	TOTAL					PREVIOUS	PREVIOUS	THIS ESTIMATE	THIS ESTIMATE	TO DATE	TO DATE
Schedule C - Water / Sewer															
Water															
C 1	Ductile Iron Pipe for Water Main, 6" Dia.	LF	68.00	\$53.00	\$3,604.00			39.00	\$2,067.00	39.00	\$2,067.00			39.00	\$2,067.00
C 2	Ductile Iron Pipe for Water Main, 8" Dia.	LF	40.00	\$59.00	\$2,360.00			80.00	\$4,720.00	80.00	\$4,720.00			80.00	\$4,720.00
C 3	Ductile Iron Pipe for Water Main, 12" Dia.	LF	330.00	\$62.00	\$20,460.00			148.00	\$9,176.00	148.00	\$9,176.00			148.00	\$9,176.00
C 4	Blowoff Assembly	EA	5.00	\$1,000.00	\$5,000.00			5.00	\$5,000.00	5.00	\$5,000.00			5.00	\$5,000.00
C 5	Tapping Sleeve and Valve Assembly, 12 In.x8 In.	EA	1.00	\$3,500.00	\$3,500.00			2.00	\$7,000.00	2.00	\$7,000.00			2.00	\$7,000.00
C 6	Tapping Sleeve and Valve Assembly, 12 In.x12 In.	EA	4.00	\$5,000.00	\$20,000.00			3.00	\$15,000.00	3.00	\$15,000.00			3.00	\$15,000.00
C 7	Resetting Existing Hydrant	EA	3.00	\$1,500.00	\$4,500.00			3.00	\$4,500.00	3.00	\$4,500.00			3.00	\$4,500.00
C 8	Service Connection, 1-In. Dia.	EA	1.00	\$1,100.00	\$1,100.00			1.00	\$1,100.00	1.00	\$1,100.00			1.00	\$1,100.00
Sanitary Sewer															
C 9	Class 200 Sewer Pipe, 6 In. Diam.	LF	180.00	\$50.00	\$9,000.00			180.00	\$9,000.00	180.00	\$9,000.00			180.00	\$9,000.00
C 10	Tapping Sleeve and Assembly, 10 In. x 6 In.	EA	3.00	\$2,900.00	\$8,700.00			3.00	\$8,700.00	3.00	\$8,700.00			3.00	\$8,700.00
C 11	Sanitary Sewer Service Connection 1 In. Diam.	EA	1.00	\$900.00	\$900.00			1.00	\$900.00	1.00	\$900.00			1.00	\$900.00
Subtotal					\$79,124.00			\$67,163.00		\$67,163.00				\$67,163.00	
Schedule B Change Orders															
C 1															

	ORIGINAL CONTRACT TOTAL	\$4,212,950.80	Funding Totals	\$3,283,218.85	Water/Sewer Totals	\$67,163.00	Previous Estimates	\$2,967,663.13	Current Estimate	\$382,718.72	Totals to Date	\$3,350,381.85
	CHANGE ORDERS TO DATE	-----	CO'S To Date	\$85,130.90	CO'S To Date	\$85,130.90	CO'S To Date	\$85,130.90	CO'S To Date	\$85,130.90	CO'S To Date	\$85,130.90
	SUBTOTAL	\$4,212,950.80	Subtotal	\$3,368,349.75	Subtotal	\$67,163.00	Subtotal	\$3,052,794.03	Subtotal	\$382,718.72	Subtotal	\$3,435,512.75
	SALES TAX (8.4%) - SCHEDULE C ONLY	\$6,646.42	Sales Tax (8.4%)	\$5,641.69	Sales Tax (8.4%)	\$5,641.69	Sales Tax (8.4%)	\$5,641.69	Sales Tax (8.4%)	\$5,641.69	Sales Tax (8.4%)	\$5,641.69
	TOTAL CONTRACT	\$4,219,597.22	Total =	\$3,368,349.75	Total =	\$72,804.69	Total =	\$3,058,435.73	Total =	\$382,718.72	Total =	\$3,441,154.45

This Information is for internal use/tracking purposes only.			
	Current Estimate Totals	Previous Estimate Totals	Totals-To-Date
Sch. A & B - STP / TIB / REET Account Number: 313-20-595-300-65	\$382,718.72	\$2,985,631.03	\$3,368,349.75
Sch. C - Water Account Number: 424-00-594-340-65		\$47,764.29	\$47,764.29
Sch. C - Sewer Account Number: 424-00-594-350-65		\$20,162.40	\$20,162.40
Sch. C - Fire Suppression Acct. No.: 115-09-522-500-48		\$4,878.00	\$4,878.00
Total This Estimate =	\$382,718.72	\$3,058,435.73	\$3,441,154.45

Arita Ashton 2/9/15
 Project Engineer Date

Edward Schep 2/9/15
 Contractor Date

Jan C. Cantler 2-9-15
 Engineering Manager Date



Gray & Osborne, Inc.
CONSULTING ENGINEERS

January 15, 2015

Mr. Steve Wall, P.E.
Public Works Director
City of Camas
616 NE Fourth Avenue
Camas, Washington 98642

SUBJECT: PROPOSAL FOR NPDES PERMIT REVIEW – 2015 AMENDMENT
CITY OF CAMAS, CLARK COUNTY, WASHINGTON
G&O #12454.00

Dear Mr. Wall:

Per your request, Gray & Osborne, Inc. is submitting this proposal for an amendment to our existing contract for NPDES Permit Review.

For this project, I will continue to serve as Project Manager. As indicated in the attached Exhibit B, the estimated cost of the attached scope of work is the not-to-exceed amount of \$9,750.

Please advise us should you require any additional information concerning this proposal.

Sincerely,

GRAY & OSBORNE, INC.



Jay L. Swift, P.E.

JLS/hhj
Encl.

cc: Mr. Jim Hodges, Capital Projects Manager, City of Camas



Mr. Steve Wall, P.E.
January 15, 2015
Page 2

CITY OF CAMAS – NPDES PERMIT REVIEW – 2015 AMENDMENT

Gray & Osborne, Inc. is hereby authorized to proceed with the engineering services as noted herein and under the terms and conditions of our current On-Call Water and Wastewater Engineering Services Contract dated December 2, 2013, for a cost not to exceed \$9,750 as noted herein without further written direction and authorization of the City.

Name (Print)

Title

Signature

Date

EXHIBIT A

SCOPE OF WORK

CITY OF CAMAS NPDES PERMIT REVIEW – 2015 AMENDMENT ENGINEERING SERVICES

The following provides a scope of work for Gray & Osborne, Inc. to provide engineering services as an amendment for our existing NPDES Permitting Support scope. The scope of work includes evaluation of a: (1) the draft state waste discharge permit for Linear Technology Corporation, and (2) a new draft and final NPDES permit for the City's Wastewater Treatment Facility (WWTF).

PROPOSED SCOPE OF WORK

The proposed scope of work is described below.

1. Review the draft State Waste Discharge (SWD) Permit for Linear Technology Corporation. Evaluate the proposed sulfate limits in the SWD Permit and in WWTF influent for consistency with past MAHL (maximum allowable headworks loading) limits established in the *Neutralized Sulfuric Acid Disposal Study* (Gray & Osborne, April 2010). Provide comments to the City and draft response letter language for the City's use.
2. Conduct an "entity review" of the draft NPDES Permit for the City's WWTF. Evaluate the new permit for changes from the previous permit, impact to the City's operations, regulatory risk, and costs. Evaluate consistency of the new permit with the City's Wastewater Facility Plan and General Sewer Plan and understandings/agreements with Ecology. Review and verify key calculations. Prepare a draft comment letter for the City's review. Incorporate City comments into the review letter and submit it to Ecology.
3. Perform a "public review" of the draft NPDES Permit for the City's WWTF for the same issues described in Task 2. Prepare a draft comment letter for the City's review. Incorporate City comments into the review letter and submit it to Ecology.
4. Review the final permit and Ecology's responses to comments, and provide recommendations for any follow-up actions by the City.
5. Provide additional NPDES or SWD permitting support as directed by the City.
6. Attend up to two meetings.

EXHIBIT B

ENGINEERING SERVICES SCOPE AND ESTIMATED COST

City of Camas - NPDES Permit Review - 2015 Amendment

Tasks	Principal Hours	Project Manager Hours	Project Eng. Hours
1 Linear Technology Corporation Permit Review		8	2
2 Review and Comment - "Entity Review" Draft NPDES Permit for City's WWTF	2	16	4
3 Review and Comment - "Public Review" Draft NPDES Permit for City's WWTF	1	8	2
4 Review and Comment - Final NPDES Permit for City's WWTF	1	4	1
5 Additional Permit Review as Directed by City		8	4
6 Meetings	3	6	
Hour Estimate:	7	50	13
Direct Labor Cost Billing Rate Range:	\$35 to \$59	\$35 to \$56	\$33 to \$43
Estimated Hourly Rates:	\$55	\$42	\$37
Direct Labor Cost:	\$385	\$2,100	\$481

Subtotal Direct Labor:	\$ 2,966
Indirect Costs (180%):	\$ 5,339
Total Labor Cost:	\$ 8,305
Fee (15%):	\$ 1,246
Subtotal Labor & Fees:	\$ 9,551
Direct Non-Salary Cost:	
Mileage & Expenses (Mileage @ \$0.57/mile)	\$ 199
TOTAL ESTIMATED COST:	\$ 9,750

* Actual labor cost will be based on each employee's actual rate. Estimated rates are for determining total estimated cost only.

January 26, 2015

City of Camas
Attn: Steve Wall
PO Box 1055
Camas, WA 98607

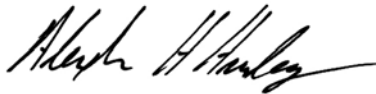
RE: Professional services proposal for the Jones 2015 Timber Sale.

Mr. Wall:

Attached is our estimate to provide professional forest management, forest engineering and turbidity monitoring for the Jones 2015 Timber Sale located in Clark County, Washington.

This proposal is based on the adopted City of Camas Boulder Creek and Jones Creek Forest Management Plan and our extensive experience working on similar projects throughout the Pacific Northwest and for the City. We look forward to working with you on this project. Please give me a call if you have any questions or comments.

Sincerely,
AKS Engineering & Forestry Vancouver, LLC



Alexander H. Hurley, PE, PLS
Principal

LETTER OF AGREEMENT FOR PROFESSIONAL SERVICES

This agreement is made between the City of Camas (Client) and AKS Engineering & Forestry Vancouver, LLC (AKS) to provide professional forestry, forest engineering, and turbidity monitoring for the Jones 2015 Timber Sale located in the Boulder Creek and Jones Creek Watershed (Sections 3,4,9, and 12, T2N, R4E, W.M., Clark County, Washington).

PROJECT UNDERSTANDING

The City would like to implement the second harvest entry into the Boulder Creek and Jones Creek Watershed. The project deliverables will include contract administration of the Jones 2015 Timber Sale Contract, tree planting administration and monitoring services for the harvested units, and turbidity monitoring at one location within the watershed downstream of the proposed harvest units. The project will also include consultation with the City in regards to coordination with the BPA about their proposed access roads and transmission lines within the City's watershed.

SCOPE OF WORK

The following list of items outlined are services AKS will be responsible for completing.

TIMBER SALE ADMINISTRATION

CONTRACT ADMINISTRATION:

The following services described below will be provided for the duration of the Jones 2015 Timber Sale Contract:

- Attend pre-work conference to meet selected Contract Buyer and subcontractors to review Timber Sale Contract and determine plan of operations.
- Perform site visits as necessary during sale operations to ensure compliance with the timber sale contract. Up to one visit per day during active operations may be necessary.
- Review log truck tickets and payments to ensure the City is receiving adequate payments for forest products removed.
- Timber Sale close-out procedures to ensure all contract terms have been met.

POST-SALE ADMINISTRATION

TREE PLANTING ADMINISTRATION:

These services will include the following activities to re-plant the Jones 2015 Timber Sale harvest units:

- Reserve seedlings on behalf of the City.
- Prepare tree planting contract documents (City is responsible for legal portion of contract and bidding).
- Provide Contract Administration of the Tree Planting Contract to ensure compliance.

Note that the cost of purchasing trees is not included and tree seedling costs can fluctuate.

TREE SURVIVAL MONITORING:

Monitoring services include performing site visits and tree survival surveys for the first three years following tree planting. It is required under the Forest Practice Act to replant and ensure the planted trees survive the initial years and be determined as “Satisfactory Reforestation”. This will require 1-2 site visits to perform survival surveys and report findings to the State with an additional site visit to monitor competing vegetation. AKS will provide recommendations for any site vegetation management that may be required to release the planted trees from any competing vegetation.

BPA COORDINATION

These services include coordination with the City in regards to meeting with the BPA and/or their sub consultants to discuss and provide advice on the proposed transmission lines, tower locations, and access roads within the City’s watershed. AKS anticipates up to three meetings and a two site visits will be required to assist the City’s decision making process for final access road locations. Providing existing road replacement values, maintenance considerations and reviews of the BPA road design plans are included in this scope.

REIMBURSABLE EXPENSES

AKS anticipates the following reimbursable expenses correlated with the contract administration, post-sale administration, and BPA coordination services:

- Mileage
- Copies
- Deliveries
- Clerical

TURBIDITY MONITORING:

AKS understands that the City wants to begin gathering information on possible impacts on water quality prior to harvesting operations above the water intake facilities. Monitoring turbidity levels is the best procedure to ascertain a correlation between stormwater runoff before and following timber harvest above the intake facilities. The initial monitoring efforts will occur over a 2 year time frame surrounding the Jones 2015 Timber Sale. During this time frame, a baseline for turbidity levels can be established for either Jones Creek or Boulder Creek and an analysis can be performed on potential effects of the Jones 2015 Timber Sale. A threshold of exceedance of turbidity, measured in NTUs, should also be established from this data to set parameters for determining when action should be taken. For example, if there is an elevated turbidity reading that exceeds the determined baseline, further investigation measures should be taken to determine if there was a naturally occurring slide or a slide from a harvesting operation. Mitigation, if deemed appropriate, could be determined at that point in time.

EQUIPMENT AND MONITORING STATION

Continuous monitoring of the turbidity levels within a single stream will require complete dedication of the equipment for the duration of the monitoring. The recommended equipment for monitoring turbidity includes a single-parameter sonde with a turbidity sensor and associated field cables. A monitoring station will need to be established by using miscellaneous items such as PVC-pipe, steel t-posts and steel cables to try to secure and protect the equipment from the public and stream debris. AKS will purchase the necessary equipment for this monitoring station and anticipates approximately two man days will be required to fabricate and install the monitoring station in the designated stream location.

CONTINUOUS MONITORING AND REPORTING

A 15 minute sampling interval is recommended in order to capture natural events (peak rain fall, slides, etc.) and maintain continuous monitoring of the turbidity levels at the monitoring station. Monitoring services will continue from February 2015 through May 2017 to capture several months of the following wet weather season in order to provide comparable data throughout the timber harvesting process. Services to maintain the monitoring efforts will include the following:

-Initial site calibration: this includes verifying accurate measurements through the use of a portable turbidity meter, downloading data from the sonde after multiple data collection intervals, and reducing the data to ensure the equipment is functioning properly.

-Site visits: based on projected battery life, site visits are assumed to be necessary every three weeks to ensure uninterrupted data collection due to dead batteries. However, during the first three months of operations, frequency of site visits will be varied from 1 week to 4 weeks to test actual battery life. Depending on observed battery life, the frequency of site visits during long term monitoring efforts will be adjusted to minimize costs.

-Data reduction and semiannual reports: the collected turbidity data will be reduced with the necessary software and semiannual reports will be produced. The semiannual reports will include graphs and general statistics about the turbidity levels and a short summary of the information with comparisons to local rain gages. The report schedule will follow the Jones 2015 Timber Sale operational seasons such as (June 2015 and Sept. 2015) and (June 2016 and Sept. 2016).

-Final reporting: the semiannual reports will be available for the City at any time during the monitoring process; however, a comprehensive report will be provided following the monitoring timeline of February 2015 through May 2016. The final report will compile all semiannual reports and summarize the results of the study to compare turbidity levels at the designated monitoring station pre-timber harvest against post-timber harvest in the watershed.

-Possible investigation: if the turbidity monitoring discovers abnormally high turbidity readings such as from a landslide, AKS will investigate upstream reaches to attempt to determine the cause of the high turbidity outputs. AKS will report the findings to the City and work with the City on potential resolutions if determined appropriate.

MONITORING REIMBURSABLE EXPENSES

AKS anticipates the following reimbursable expenses correlated with the turbidity monitoring services:

- Mileage
- Copies
- Deliveries
- Clerical

ESTIMATE FOR SERVICES

TIMBER SALE ADMINISTRATION

CONTRACT ADMINISTRATION: \$40,000

POST-SALE ADMINISTRATION

TREE PLANTING ADMINISTRATION: \$7,000

TREE SURVIVAL MONITORING: \$3,000

BPA COORDINATION: \$5,000

REIMBURSABLE EXPENSES: \$3,000

TURBIDITY MONITORING

EQUIPMENT AND MONITORING STATION: \$9,500

CONTINUOUS MONITORING AND REPORTING: \$17,000

REIMBURSABLE EXPENSES: \$1,000

TOTAL ESTIMATED COST (WITHOUT TURBIDITY MONITORING): \$58,000

TOTAL ESTIMATED COST (INCLUDING TURBIDITY MONITORING): \$85,500

ASSUMPTIONS:

- Contract Administration services assumes that the timber sale will be active during the summers of 2015 and 2016; therefore, an eight month timeframe is assumed necessary to complete the timber sale and that daily inspections are required. Costs will be less if the sale is completed in one summer and fewer inspections are required.
- Public outreach services and meetings are not included in this proposal.
- The tree planting contract is to be prepared by AKS with review by the City Attorney.
- The post sale administration does not include the cost to purchase the tree seedlings.
- Tree survival monitoring is only for the first three years following planting. Additional monitoring may be necessary depending on the condition of the planted trees. Additional monitoring services can be determined at that time.
- BPA Coordination efforts do not include analyzing full impacts of the transmission lines or access roads within the Watershed. These impacts (loss of timber production, seedling loss, etc.) can be evaluated at a later time upon the City's request with additional contract scope.
- Turbidity monitoring estimates are only for one monitoring station for the described monitoring cycle of February 2015 through May 2017. Continued monitoring beyond the initial monitoring cycle can be determined at a later date.
- AKS will attempt to set up the monitoring station in a secure area that will not be damaged by high stream flows, debris, vandalism, etc. In the event that the equipment is damaged due to factors outside of AKS' control, the City of Camas will be responsible for the cost of replacement equipment.
- The estimate does not include possible permitting fees associated with the Turbidity Monitoring.

BASIS OF FEE AND BILLING:

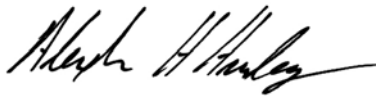
In consideration for performing said services, the Client agrees to compensate AKS on an hourly basis at our standard rates. Invoices will be issued monthly for work performed the previous month.

EXCLUSIONS:

Services not specifically included.

Fees or bonds required by affected governmental bodies for review, filing, and submission of plans, drawings, and plats are not included in the estimate. Title company fees are not included.

See attached "General Provisions".



AKS Engineering & Forestry Vancouver, LLC

Mayor Scott Higgins

Date 01-26-15

Date _____

AKS Engineering & Forestry Vancouver, LLC
9600 NE 126th Avenue, Suite 2520
Vancouver, WA 99682

City of Camas
PO Box 1055
Camas, WA 98607

GENERAL PROVISIONS

1. **REIMBURSABLE EXPENSES:** Reimbursable expenses of AKS Engineering & Forestry, LLC (AKS) shall be those expenses incurred directly for the project, including but not limited to transportation costs, meals, lodging, computer services, printing, permit fees, and binding charges. Reimbursement for these expenses shall be on the basis of actual costs (if incurred through an outside vendor) or at AKS' current cost rates.
2. **OUTSIDE SERVICES:** Any technical or professional services furnished by an outside consultant or contractor will be billed at cost.
3. **AKS' FEES AND FEE ESTIMATES:** Unless otherwise agreed in writing, charges for all AKS' services will be billed in accordance with AKS' rate schedule in effect at the time the services are performed. Any estimate provided by AKS will be provided on the basis of experience and judgment, but AKS cannot warrant that actual time and expenses will not vary from these fee estimates.
4. **PAYMENT TO AKS:** Monthly invoices will be issued by AKS for all work performed under the terms of this Agreement. Invoices are due and payable on receipt. All amounts more than 30 days past due will be subject to finance charges. Finance charges are computed at a periodic rate of 1.5% per month (which is an annual percentage rate of 18%), unless another rate is mandated by law, in which case the finance charge shall equal the maximum interest rate allowed by law. Client agrees that, if it disputes any portion of an invoice, Client must notify AKS of such dispute in writing within 30 days of the invoice date, which notice must set forth the disputed amount and the reason for such dispute. Client hereby waives any right to dispute an invoice more than 30 days after an invoice's date.
5. **FAILURE TO PAY:** Client acknowledges that failure to timely pay any amount hereunder is a material breach of this Agreement, and that AKS may, in its sole discretion, suspend service and all other obligations under this contract and/or under any other contract between AKS and Client (and/or between AKS and any other client subject to control by Client or any of Client's principals) in the case of any late payment, and that if any payment is not timely made, AKS may further withhold plans, documents, and information (whether such documents and/or information was prepared under this contract, another contract between AKS and Client, or a contract between AKS and another client subject to control by Client or one of Client's principal's). AKS may claim a lien for all materials, labor, and services furnished if any amount due hereunder is not timely paid. In addition to the principal amount due hereunder, and any Finance Charges that accrue hereunder, Client agrees to pay AKS all collection costs that AKS incurs, regardless of whether or not litigation is initiated, including but not limited to reasonable attorney's fees, court costs, and charges for AKS staff time (at AKS' regular rates). If AKS suspends work as a result of Client's non-payment, AKS may require an additional "start up fee" to re-start work hereunder, even if Client cures all past defaults.
6. **GOVERNMENT CHANGES:** If AKS, pursuant to this Agreement, produces a work product and/or performs field work that complies with the ordinances, policies and procedures of governmental agencies, and any such governmental agency changes its ordinances, policies, procedures or requirements after the date of this Agreement, any additional office or field work thereby required shall be paid for by Client as extra work.
7. **ADDITIONAL SERVICES:** Client agrees that if services not specified in this Agreement are provided, or if Client requests services not specified here-in, Client agrees to timely pay for all such services as extra work at AKS' standard rates (if not otherwise specified).
8. **CONSTRUCTION COST ESTIMATES:** Any construction cost estimates provided by AKS will be on a basis of experience and judgment, but since AKS has no control over market conditions or bidding procedures, AKS cannot warrant that bids or actual construction costs will not vary from these cost estimates.
9. **PROFESSIONAL STANDARDS:** AKS shall only be responsible, to the level of competency and the standards of care, skill, and diligence maintained by professionals providing similar services in AKS' local community at the time that AKS provides services under this Agreement. **AKS makes no other warranty, expressed or implied.**
10. **TERMINATION-** Either Client or AKS may terminate this Agreement by giving 30 days written notice to the other party. In such event, Client shall immediately pay AKS in full for all work previously authorized and performed prior to effective date of termination.
11. **LIMITATION OF LIABILITY:** Client hereby waives all claims against AKS and releases AKS from any claim, demand, loss, or liability that Client may now or hereafter have against AKS arising out of or in connection with this Agreement or the services provided hereunder (whether in tort, contract or otherwise), provided that any such claim, demand, loss or liability has not resulted from AKS' gross negligence or willful misconduct. In no case shall AKS's liability to the Client for any cause or combination of causes, in the aggregate, exceed the amount of the fee actually paid to AKS under this Agreement. In no event shall AKS be liable for any indirect or consequential damages of any kind.
12. **LEGAL EXPENSES:** In the event either party hereto must seek legal counsel for the purpose of enforcing or otherwise interpreting the terms of this Agreement, whether or not legal action is initiated, the losing party shall pay the prevailing party all fees, costs, and expenses incurred including reasonable attorneys' fees and expert witness fees, including any fees and costs incurred on appeal.
13. **ENFORCEABILITY:** In case any one or more of the provisions contained in this Agreement shall be held illegal, the enforceability of the remaining provisions contained herein shall not be impaired.
14. **AUTHORIZATION TO PROCEED:** Any request by Client for AKS to proceed with work shall constitute an express acceptance of all terms to this Agreement, including these General Provisions.
15. **TRANSFERABILITY OF AGREEMENT:** This Agreement is between Client and AKS and is not transferable without the written consent of the other party.
16. **ACCESS TO SITE:** Unless otherwise stated, Client warrants that AKS will have access to the site, to the same degree as Client, for activities necessary to perform services. Client represents that it has unrestricted access to the site.
17. **OWNERSHIP OF DOCUMENTS:** It is understood and agreed that the calculations, drawings, and specifications prepared pursuant to this Agreement ("Work Product"), whether in hard copy or machine-reader form, are instruments of professional service intended for one-time use by Client only for this project only. Work Product is and shall remain the property of AKS. Client shall not obtain the right to use the Work Product, even for one-time use unless all amounts due under this Agreement are paid in full. If Client is in possession of any Work Product and has not paid any amount due hereunder, AKS may demand return of the Work Product, and may specifically enforce Client's obligation to return such Work Product.
18. **INSURANCE:** AKS is covered by a general liability insurance policy and a professional liability policy, which policies shall each provide for at least \$1,000,000 coverage per occurrence. If Client requires additional coverage in excess of that amount, and if procurable, AKS will obtain additional insurance to the level Client requests at Client's sole expense.
19. **INDEMNITY:** Client hereby agrees to defend AKS and hold AKS harmless from any claim, demand, loss or liability, including reasonable attorneys' fees, that results from for any loss, damage or liability arising from any acts by the Client, its agents, staff, and/or other consultants or agents that act at the direction of Client.
20. **WORK OF OTHERS:** Client agrees that AKS shall not be responsible or liable for any work performed or services provided by any entity other than AKS and/or any person that is not a direct employee of AKS. Client acknowledges that AKS may assist Client with the coordination of other contractors and/or design professional and/or consultants, and/or that AKS will make arrangements for the provision of services by others; and Client further acknowledges that such coordination and/or other such efforts does not make AKS liable for the services provided by others. Client understands and expressly acknowledges that AKS does not provide Geo-technical engineering, Traffic engineering, structural engineering, wetland delineation, and electrical engineering, services. Client expressly acknowledges that AKS does not assume responsibility for determining, supervising, implementing or controlling the means, methods, technique, sequencing or procedures of construction, or monitoring, evaluating or reporting job conditions that relate to health, safety or welfare.
21. **ALL TERMS MATERIAL:** All provisions herein are material to AKS's agreement to provide services, and were expressly negotiated by the parties.
22. **VENUE:** Any litigation initiated in connection with this Agreement shall take place in Clark County, Washington, unless such case involves a lien claim that must be litigated elsewhere as a matter of law, in which case all issues related to this Agreement may be litigated in the same forum as the lien claim. All claims of any nature that relate to this Agreement shall be subject to Washington law, unless such claims relate to the foreclosure of a lien and are, as a matter of law, subject to the laws of another state, in which case only the lien claim will be subject to the laws of another state, and all other claims/issues will remain subject to Washington law.
23. **NOTICE OF CLAIMS:** Client shall, and expressly agrees to, provide AKS immediate written notice of any facts that could potentially result in any potential claim against AKS, including but not limited to any dispute, any claimed damages, any perceived failure by AKS, or otherwise. As a condition precedent to any recovery from AKS, Client shall give AKS written notice of any such claim or facts that could result in a claim not later than ten (10) days after the date of the occurrence of the event causing the potential claim. Client's failure to provide such notice, for any reason, shall constitute waiver of such claim.

CITY OF CAMAS PROJECT NO. S-566 Project Name: NW Friberg St/NE Goodwin Rd Roadway			PAY ESTIMATE: SEVEN PAY PERIOD: 1/01/2015 Through 1/31/2015 ORIGINAL CONTRACT AMOUNT: \$4,102,170.92				McDonald Excavating, Inc. 2719 Main Street Washougal, WA 98671 360-835-8794				
--	--	--	---	--	--	--	--	--	--	--	--

ITEM NO.	DESCRIPTION	UNIT	ORIGINAL QUANTITY	UNIT PRICE	CONTRACT TOTAL	QUANTITY PREVIOUS	TOTAL PREVIOUS	QUANTITY THIS EST.	TOTAL THIS EST.	QUANTITY TO DATE	TOTAL TO DATE
SCHEDULE A: ROAD AND STORM											
A1	Roadway Surveying	LS	1.00	\$33,350.00	\$33,350.00	0.90	\$30,015.00	0.10	\$3,335.00	1.00	\$33,350.00
A2	SPCC Plan	LS	1.00	\$300.00	\$300.00	1.00	\$300.00	0.00	\$0.00	1.00	\$300.00
A3	Mobilization	LS	1.00	\$190,000.00	\$190,000.00	1.00	\$190,000.00	0.00	\$0.00	1.00	\$190,000.00
A4	Traffic Control Supervisor	LS	1.00	\$10,500.00	\$10,500.00	0.90	\$9,450.00	0.10	\$1,050.00	1.00	\$10,500.00
A5	Flaggers and Spotters	HR	1,680.00	\$50.00	\$84,000.00	3,574.00	\$178,700.00	300.00	\$15,000.00	3874.00	\$193,700.00
A6	Other Traffic Control Labor	HR	80.00	\$50.00	\$4,000.00	381.00	\$19,050.00	34.00	\$1,700.00	415.00	\$20,750.00
A7	Other Temporary Traffic Control	LS	1.00	\$3,500.00	\$3,500.00	0.90	\$3,150.00	0.10	\$350.00	1.00	\$3,500.00
A8	Portable Changeable Message Sign	HR	9,400.00	\$3.00	\$28,200.00	8,376.00	\$25,128.00	744.00	\$2,232.00	9120.00	\$27,360.00
A9	Construction Sign Class A	SF	110.00	\$20.00	\$2,200.00	186.00	\$3,720.00	0.00	\$0.00	186.00	\$3,720.00
A10	Clearing and Grubbing	AC	7.00	\$7,500.00	\$52,500.00	7.00	\$52,500.00	0.00	\$0.00	7.00	\$52,500.00
A11	Removal of Structures and Obstructions	LS	1.00	\$7,500.00	\$7,500.00	1.00	\$7,500.00	0.00	\$0.00	1.00	\$7,500.00
A12	Sawcutting Asphalt Pavement	LF	4,225.00	\$1.00	\$4,225.00	4,225.00	\$4,225.00	0.00	\$0.00	4225.00	\$4,225.00
A13	Roadway Excavation, Incl. Haul	CY	8,600.00	\$14.35	\$123,410.00	9,500.00	\$136,325.00	0.00	\$0.00	9500.00	\$136,325.00
A14	Gravel Borrow, Incl. Haul	CY	2,550.00	\$22.32	\$56,916.00	2,920.00	\$65,174.40	0.00	\$0.00	2920.00	\$65,174.40
A15	Embankment Compaction	CY	7,150.00	\$6.50	\$46,475.00	9,000.00	\$58,500.00	0.00	\$0.00	9000.00	\$58,500.00
A16	Unsuitable Foundation Excavation, Incl. Haul	CY	100.00	\$20.00	\$2,000.00	1,850.00	\$37,000.00	0.00	\$0.00	1850.00	\$37,000.00
A17	Structure Excavation Class A, Incl. Haul	CY	75.00	\$27.00	\$2,025.00	75.00	\$2,025.00	0.00	\$0.00	75.00	\$2,025.00
A18	Gravel Backfill for Wall	CY	90.00	\$50.00	\$4,500.00	90.00	\$4,500.00	0.00	\$0.00	90.00	\$4,500.00
A19	Crushed Surfacing Base Course, 1 1/4" (-) C.S.B.C.	CY	6,065.00	\$36.00	\$218,340.00	8,476.00	\$305,136.00	0.00	\$0.00	8476.00	\$305,136.00
A20	Planing Bituminous Pavement	SY	3,460.00	\$3.00	\$10,380.00	0.00	\$0.00	0.00	\$0.00	0.00	\$0.00
A21	HMA Cl. 1/2" PG 64-22	TN	5,500.00	\$70.00	\$385,000.00	2,923.90	\$204,673.00	0.00	\$0.00	2923.90	\$204,673.00
A22	HMA for Approach, Cl. 1/2" PG 64-22	TN	80.00	\$200.00	\$16,000.00	93.27	\$18,654.00	0.00	\$0.00	93.27	\$18,654.00
A23	Structural Earth Wall	SF	1,450.00	\$20.00	\$29,000.00	1,450.00	\$29,000.00	0.00	\$0.00	1450.00	\$29,000.00
A24	Testing Storm Sewer Pipe	LF	7,165.00	\$2.00	\$14,330.00	7,165.00	\$14,330.00	0.00	\$0.00	7165.00	\$14,330.00
A25	Corrugated Polyethylene Storm Sewer Pipe, 6" Dia.	LF	40.00	\$85.00	\$3,400.00	40.00	\$3,400.00	0.00	\$0.00	40.00	\$3,400.00
A26	Corrugated Polyethylene Storm Sewer Pipe, 10" Dia.	LF	228.00	\$58.00	\$13,224.00	228.00	\$13,224.00	0.00	\$0.00	228.00	\$13,224.00
A27	Corrugated Polyethylene Storm Sewer Pipe, 12" Dia.	LF	1,693.00	\$50.00	\$84,650.00	1,693.00	\$84,650.00	0.00	\$0.00	1693.00	\$84,650.00
A28	Corrugated Polyethylene Storm Sewer Pipe, 15" Dia.	LF	991.00	\$42.00	\$41,622.00	991.00	\$41,622.00	0.00	\$0.00	991.00	\$41,622.00
A29	Corrugated Polyethylene Storm Sewer Pipe, 18" Dia.	LF	784.00	\$65.00	\$50,960.00	784.00	\$50,960.00	0.00	\$0.00	784.00	\$50,960.00
A30	Corrugated Polyethylene Storm Sewer Pipe, 21" Dia.	LF	191.00	\$70.00	\$13,370.00	191.00	\$13,370.00	0.00	\$0.00	191.00	\$13,370.00
A31	Corrugated Polyethylene Storm Sewer Pipe, 24" Dia.	LF	641.00	\$80.00	\$51,280.00	641.00	\$51,280.00	0.00	\$0.00	641.00	\$51,280.00
A32	Corrugated Polyethylene Storm Sewer Pipe, 60" Dia., Detention System	LF	2,400.00	\$310.00	\$744,000.00	2,400.00	\$744,000.00	0.00	\$0.00	2400.00	\$744,000.00
A33	Polyvinyl Chloride (PVC) C-905 Storm Sewer Pipe, 20" Dia.	LF	345.00	\$80.00	\$27,600.00	345.00	\$27,600.00	0.00	\$0.00	345.00	\$27,600.00
A34	Polyvinyl Chloride (PVC) C-905 Storm Sewer Pipe, 24" Dia.	LF	80.00	\$105.00	\$8,400.00	80.00	\$8,400.00	0.00	\$0.00	80.00	\$8,400.00

CITY OF CAMAS PROJECT NO. S-566 Project Name: NW Friberg St/NE Goodwin Rd Roadway			PAY ESTIMATE: SEVEN PAY PERIOD: 1/01/2015 Through 1/31/2015 ORIGINAL CONTRACT AMOUNT: \$4,102,170.92				McDonald Excavating, Inc. 2719 Main Street Washougal, WA 98671 360-835-8794				
--	--	--	---	--	--	--	--	--	--	--	--

ITEM NO.	DESCRIPTION	UNIT	ORIGINAL QUANTITY	UNIT PRICE	CONTRACT TOTAL	QUANTITY PREVIOUS	TOTAL PREVIOUS	QUANTITY THIS EST.	TOTAL THIS EST.	QUANTITY TO DATE	TOTAL TO DATE
A35	Manhole 48" Dia. Type 1	EA	6.00	\$3,000.00	\$18,000.00	6.00	\$18,000.00	0.00	\$0.00	6.00	\$18,000.00
A36	Manhole 48" Dia. Type 3	EA	12.00	\$2,690.00	\$32,280.00	12.00	\$32,280.00	0.00	\$0.00	12.00	\$32,280.00
A37	Manhole 54" Dia. Type 1	EA	2.00	\$4,000.00	\$8,000.00	2.00	\$8,000.00	0.00	\$0.00	2.00	\$8,000.00
A38	Manhole 54" Dia. Type 3	EA	2.00	\$3,700.00	\$7,400.00	2.00	\$7,400.00	0.00	\$0.00	2.00	\$7,400.00
A39	Manhole 54" Dia. Type 1 - Flow Control	EA	1.00	\$6,400.00	\$6,400.00	1.00	\$6,400.00	0.00	\$0.00	1.00	\$6,400.00
A40	Riser, 36" Dia.	EA	7.00	\$6,920.00	\$48,440.00	7.00	\$48,440.00	0.00	\$0.00	7.00	\$48,440.00
A41	Catch Basin, Type 1	EA	2.00	\$1,600.00	\$3,200.00	2.00	\$3,200.00	0.00	\$0.00	2.00	\$3,200.00
A42	Catch Basin, Type 2	EA	14.00	\$1,650.00	\$23,100.00	14.00	\$23,100.00	0.00	\$0.00	14.00	\$23,100.00
A43	Ditch Inlet	EA	1.00	\$1,765.00	\$1,765.00	1.00	\$1,765.00	0.00	\$0.00	1.00	\$1,765.00
A44	Oversized Ditch Inlet	EA	2.00	\$2,150.00	\$4,300.00	2.00	\$4,300.00	0.00	\$0.00	2.00	\$4,300.00
A45	Area Drain, 18 Inch Basin	EA	4.00	\$3,000.00	\$12,000.00	4.00	\$12,000.00	0.00	\$0.00	4.00	\$12,000.00
A46	Area Drain, 24 Inch Basin	EA	7.00	\$3,000.00	\$21,000.00	7.00	\$21,000.00	0.00	\$0.00	7.00	\$21,000.00
A47	Joint Trench	LF	355.00	\$36.00	\$12,780.00	355.00	\$12,780.00	0.00	\$0.00	355.00	\$12,780.00
A48	Shoring, Trench Safety System (\$1.00 min./LF)	LF	7,165.00	\$2.00	\$14,330.00	7,165.00	\$14,330.00	0.00	\$0.00	7165.00	\$14,330.00
A49	Kristar Vault 7'x12' 10 Cartridges	EA	1.00	\$38,000.00	\$38,000.00	1.00	\$38,000.00	0.00	\$0.00	1.00	\$38,000.00
A50	Kristar Vault 9'x16' 23 Cartridges	EA	1.00	\$41,000.00	\$41,000.00	1.00	\$41,000.00	0.00	\$0.00	1.00	\$41,000.00
A51	ESC Lead	DAY	140.00	\$32.00	\$4,480.00	126.00	\$4,032.00	14.00	\$448.00	140.00	\$4,480.00
A52	Seeding, Fertilizing, Mulching	AC	1.00	\$12,000.00	\$12,000.00	0.75	\$9,000.00	0.00	\$0.00	0.75	\$9,000.00
A53	High Visibility Fence	LF	1,175.00	\$2.00	\$2,350.00	1,739.00	\$3,478.00	0.00	\$0.00	1739.00	\$3,478.00
A54	Erosion Control	LS	1.00	\$32,250.00	\$32,250.00	0.95	\$30,637.50	0.05	\$1,612.50	1.00	\$32,250.00
A55	Pipe Outfalls	EA	5.00	\$300.00	\$1,500.00	5.00	\$1,500.00	0.00	\$0.00	5.00	\$1,500.00
A56	Compost Mulch	CY	450.00	\$44.50	\$20,025.00	0.00	\$0.00	0.00	\$0.00	0.00	\$0.00
A57	Top Soil Type A	CY	1,360.00	\$20.00	\$27,200.00	0.00	\$0.00	1,360.00	\$27,200.00	1360.00	\$27,200.00
A58	Root Barrier	LF	7,640.00	\$9.45	\$72,198.00	6,220.00	\$58,779.00	1,420.00	\$13,419.00	7640.00	\$72,198.00
A59	PSIPE - Acer platanoides 'Crimson Sentry', 3" Cal.	EA	27.00	\$360.00	\$9,720.00	22.00	\$7,920.00	0.00	\$0.00	22.00	\$7,920.00
A60	PSIPE - Amelanchier laevis 'Autumn Brilliance, 2" Cal.	EA	42.00	\$306.00	\$12,852.00	21.00	\$6,426.00	0.00	\$0.00	21.00	\$6,426.00
A61	PSIPE - Carpinus caroliniana, 3" Cal.	EA	59.00	\$360.00	\$21,240.00	59.00	\$21,240.00	0.00	\$0.00	59.00	\$21,240.00
A62	PSIPE - Fraxinus pennsylvanica 'Summit', 3" Cal.	EA	12.00	\$360.00	\$4,320.00	10.00	\$3,600.00	0.00	\$0.00	10.00	\$3,600.00
A63	PSIPE - Prunus serrulata 'Amagawa', 2" Cal.	EA	35.00	\$306.00	\$10,710.00	26.00	\$7,956.00	0.00	\$0.00	26.00	\$7,956.00
A64	PSIPE - Tilia cordata, 3" Cal.	EA	70.00	\$360.00	\$25,200.00	70.00	\$25,200.00	0.00	\$0.00	70.00	\$25,200.00
A65	PSIPE - Euonymus alata 'Pipzam', 3 Gal.	EA	17.00	\$28.00	\$476.00	8.00	\$224.00	0.00	\$0.00	8.00	\$224.00
A66	PSIPE - Mahonia aquifolium 'Compacta', 3 Gal.	EA	260.00	\$28.00	\$7,280.00	130.00	\$3,640.00	0.00	\$0.00	130.00	\$3,640.00
A67	PSIPE - Rosa Gymnecarpa, 3 Gal.	EA	247.00	\$28.00	\$6,916.00	123.00	\$3,444.00	0.00	\$0.00	123.00	\$3,444.00
A68	PSIPE - Symphoricarpos albus, 3 Gal.	EA	254.00	\$28.00	\$7,112.00	127.00	\$3,556.00	0.00	\$0.00	127.00	\$3,556.00
A69	PSIPE - Spiraea x bumalda 'Gold Flame', 3 Gal.	EA	229.00	\$28.00	\$6,412.00	115.00	\$3,220.00	0.00	\$0.00	115.00	\$3,220.00
A70	PSIPE - Ajuga reptans, 4" Pot	EA	4,925.00	\$5.60	\$27,580.00	2,800.00	\$15,680.00	2,125.00	\$11,900.00	4925.00	\$27,580.00
A71	PSIPE - Arctostaphylos uva-ursa, 4" Pot	EA	3,025.00	\$5.60	\$16,940.00	1,500.00	\$8,400.00	1,525.00	\$8,540.00	3025.00	\$16,940.00

CITY OF CAMAS PROJECT NO. S-566 Project Name: NW Friberg St/NE Goodwin Rd Roadway			PAY ESTIMATE: SEVEN PAY PERIOD: 1/01/2015 Through 1/31/2015 ORIGINAL CONTRACT AMOUNT: \$4,102,170.92				McDonald Excavating, Inc. 2719 Main Street Washougal, WA 98671 360-835-8794				
--	--	--	---	--	--	--	--	--	--	--	--

ITEM NO.	DESCRIPTION	UNIT	ORIGINAL QUANTITY	UNIT PRICE	CONTRACT TOTAL	QUANTITY PREVIOUS	TOTAL PREVIOUS	QUANTITY THIS EST.	TOTAL THIS EST.	QUANTITY TO DATE	TOTAL TO DATE
A72	PSIPE - Berberis thunbergii 'Crimson Pygmy', 1 Gal.	EA	161.00	\$11.00	\$1,771.00	80.00	\$880.00	0.00	\$0.00	80.00	\$880.00
A73	PSIPE - Fragaria chiloensis, 4" Pot	EA	267.00	\$5.60	\$1,495.20	135.00	\$756.00	0.00	\$0.00	135.00	\$756.00
A74	PSIPE - Juniperous horizontalis 'Waukegan', 1 Gal.	EA	549.00	\$11.00	\$6,039.00	329.00	\$3,619.00	0.00	\$0.00	329.00	\$3,619.00
A75	PSIPE - 2nd Year	LS	1.00	\$9,450.00	\$9,450.00	0.00	\$0.00	0.00	\$0.00	0.00	\$0.00
A76	Irrigation System	LS	1.00	\$72,285.00	\$72,285.00	0.50	\$36,142.50	0.40	\$28,914.00	0.90	\$65,056.50
A77	Cement Concrete Traffic Curb and Gutter	LF	7,225.00	\$7.50	\$54,187.50	7,225.00	\$54,187.50	0.00	\$0.00	7225.00	\$54,187.50
A78	Cement Concrete Traffic Curb	LF	1,275.00	\$10.00	\$12,750.00	1,275.00	\$12,750.00	0.00	\$0.00	1275.00	\$12,750.00
A79	Cement Concrete Curb, Thickened	LF	35.00	\$42.00	\$1,470.00	0.00	\$0.00	35.00	\$1,470.00	35.00	\$1,470.00
A80	Decommission Existing Well	EA	3.00	\$925.00	\$2,775.00	3.00	\$2,775.00	0.00	\$0.00	3.00	\$2,775.00
A81	Cement Concrete Driveway Entrance	SY	235.00	\$67.00	\$15,745.00	235.00	\$15,745.00	0.00	\$0.00	235.00	\$15,745.00
A82	Chain Link Fence (42" Black Coated Vinyl)	LF	505.00	\$28.00	\$14,140.00	0.00	\$0.00	510.00	\$14,280.00	510.00	\$14,280.00
A83	Cement Concrete Sidewalk	SY	4,175.00	\$33.00	\$137,775.00	2,408.59	\$79,483.47	1,683.00	\$55,539.00	4091.59	\$135,022.47
A84	Cement Concrete Curb Ramp, Parallel	EA	5.00	\$1,670.00	\$8,350.00	1.00	\$1,670.00	4.00	\$6,680.00	5.00	\$8,350.00
A85	Cement Concrete Curb Ramp, Single Direction	EA	2.00	\$1,670.00	\$3,340.00	2.00	\$3,340.00	0.00	\$0.00	2.00	\$3,340.00
A86	Paint Line	LF	8,027.00	\$0.19	\$1,525.13	0.00	\$0.00	0.00	\$0.00	0.00	\$0.00
A87	Painted Wide Lane Line	LF	10,370.00	\$0.29	\$3,007.30	0.00	\$0.00	0.00	\$0.00	0.00	\$0.00
A88	Plastic Traffic Arrow	EA	23.00	\$133.00	\$3,059.00	0.00	\$0.00	0.00	\$0.00	0.00	\$0.00
A89	Plastic Crosswalk Line	SF	1,460.00	\$5.00	\$7,300.00	0.00	\$0.00	0.00	\$0.00	0.00	\$0.00
A90	Plastic Stop Line	LF	215.00	\$7.00	\$1,505.00	0.00	\$0.00	0.00	\$0.00	0.00	\$0.00
A91	Plastic Bicycle Lane Symbol	EA	13.00	\$306.00	\$3,978.00	0.00	\$0.00	0.00	\$0.00	0.00	\$0.00
A92	Raised Pavement Marker Type 2	Hund.	2.00	\$445.00	\$890.00	0.00	\$0.00	0.00	\$0.00	0.00	\$0.00
A93	Permanent Signing	LS	1.00	\$27,800.00	\$27,800.00	0.00	\$0.00	1.00	\$27,800.00	1.00	\$27,800.00
A94	Illumination System	LS	1.00	\$95,000.00	\$95,000.00	1.00	\$95,000.00	0.00	\$0.00	1.00	\$95,000.00
A95	Traffic Signal System - Friberg St/Goodwin Rd	LS	1.00	\$196,340.00	\$196,340.00	0.81	\$159,035.40	0.00	\$0.00	0.81	\$159,035.40
A96	Traffic Signal System - Friberg St/1st St (Loop Replacement)	LS	1.00	\$2,500.00	\$2,500.00	0.00	\$0.00	0.00	\$0.00	0.00	\$0.00
A97	ITS (Interconnect)	LS	1.00	\$10,565.00	\$10,565.00	0.95	\$10,036.75	0.00	\$0.00	0.95	\$10,036.75
A98	Field Office Building	LS	1.00	\$7,000.00	\$7,000.00	0.70	\$4,900.00	0.20	\$1,400.00	0.90	\$6,300.00
A99	Project Documentation (\$25,000 Minimum Bid)	LS	1.00	\$25,000.00	\$25,000.00	0.00	\$0.00	0.00	\$0.00	0.00	\$0.00

SCHEDULE A SUBTOTAL (NON-TAXABLE)					\$3,714,955.13		\$3,427,809.52		\$222,869.50		\$3,650,679.02
Retainage (5%) - N/A Retainage Bond Posted											
SCHEDULE A TOTAL					\$3,714,955.13		\$3,427,809.52		\$222,869.50		\$3,650,679.02

CITY OF CAMAS PROJECT NO. S-566 Project Name: NW Friberg St/NE Goodwin Rd Roadway			PAY ESTIMATE: SEVEN PAY PERIOD: 1/01/2015 Through 1/31/2015 ORIGINAL CONTRACT AMOUNT: \$4,102,170.92				McDonald Excavating, Inc. 2719 Main Street Washougal, WA 98671 360-835-8794				
--	--	--	---	--	--	--	--	--	--	--	--

ITEM NO.	DESCRIPTION	UNIT	ORIGINAL QUANTITY	UNIT PRICE	CONTRACT TOTAL	QUANTITY PREVIOUS	TOTAL PREVIOUS	QUANTITY THIS EST.	TOTAL THIS EST.	QUANTITY TO DATE	TOTAL TO DATE
SCHEDULE B: WATER AND SANITARY (TAXABLE ITEMS)											
B1	D.I. Pipe for Watermain Pipe, 8 In. Dia.	LF	235.00	\$79.00	\$18,565.00	235.00	\$18,565.00	0.00	\$0.00	235.00	\$18,565.00
B2	D.I. Pipe for Watermain Pipe, 12 In. Dia.	LF	34.00	\$120.00	\$4,080.00	34.00	\$4,080.00	0.00	\$0.00	34.00	\$4,080.00
B3	Shoring, Trench Safety System (\$1.00 min./LF)	LF	269.00	\$2.00	\$538.00	269.00	\$538.00	0.00	\$0.00	269.00	\$538.00
B4	Adjust Valve Box, Assembly No. 400	EA	9.00	\$30.00	\$270.00	9.00	\$270.00	0.00	\$0.00	9.00	\$270.00
B5	Relocate AARV Assembly, Assembly No. 401	EA	1.00	\$935.00	\$935.00	1.00	\$935.00	0.00	\$0.00	1.00	\$935.00
B6	Relocate Fire Hydrant, Valve and Fittings, Assembly No. 402	EA	2.00	\$770.00	\$1,540.00	2.00	\$1,540.00	0.00	\$0.00	2.00	\$1,540.00
B7	Cut, Connect and Fittings, Assembly No. 403	EA	1.00	\$325.00	\$325.00	1.00	\$325.00	0.00	\$0.00	1.00	\$325.00
B8	Connect, Valve and Fittings, Assembly No. 404	EA	1.00	\$3,555.00	\$3,555.00	1.00	\$3,555.00	0.00	\$0.00	1.00	\$3,555.00
B9	Connect, Valve and Fittings, Assembly No. 405	EA	1.00	\$2,805.00	\$2,805.00	1.00	\$2,805.00	0.00	\$0.00	1.00	\$2,805.00
B10	Connect, Valve and Fittings, Assembly No. 406	EA	3.00	\$3,545.00	\$10,635.00	3.00	\$10,635.00	0.00	\$0.00	3.00	\$10,635.00
B11	Water Service, Assembly No. 407	EA	1.00	\$1,130.00	\$1,130.00	1.00	\$1,130.00	0.00	\$0.00	1.00	\$1,130.00
B12	Adjust AARV Assembly, Assembly No. 408	EA	1.00	\$55.00	\$55.00	1.00	\$55.00	0.00	\$0.00	1.00	\$55.00
B13	Adjust Meter Box, Assembly No. 409	EA	1.00	\$55.00	\$55.00	1.00	\$55.00	0.00	\$0.00	1.00	\$55.00
B14	Adjust Irrigation Valve Box, Assembly No. 410	EA	1.00	\$55.00	\$55.00	1.00	\$55.00	0.00	\$0.00	1.00	\$55.00
B15	Relocate Water Service, Assembly No. 411	EA	1.00	\$645.00	\$645.00	1.00	\$645.00	0.00	\$0.00	1.00	\$645.00
B16	Fire Hydrant Assembly, Assembly No. 412	EA	3.00	\$3,800.00	\$11,400.00	3.00	\$11,400.00	0.00	\$0.00	3.00	\$11,400.00
B17	Relocate Fire Hydrant, Valve and Fittings, Assembly No. 413	EA	1.00	\$5,850.00	\$5,850.00	1.00	\$5,850.00	0.00	\$0.00	1.00	\$5,850.00
B18	Cut, Connect, Pipe and Fittings, Assembly No. 414	EA	1.00	\$3,000.00	\$3,000.00	1.00	\$3,000.00	0.00	\$0.00	1.00	\$3,000.00
B19	Cut, Connect and Fittings, Assembly No. 415	EA	2.00	\$325.00	\$650.00	2.00	\$650.00	0.00	\$0.00	2.00	\$650.00
B20	PVC Pressure Sanitary Sewer Pipe, 8 In. Dia.	LF	2,950.00	\$43.00	\$126,850.00	2,950.00	\$126,850.00	0.00	\$0.00	2950.00	\$126,850.00
B21	PVC Pressure Sanitary Sewer Pipe, 6 In. Dia.	LF	55.00	\$41.00	\$2,255.00	55.00	\$2,255.00	0.00	\$0.00	55.00	\$2,255.00
B22	PVC Pressure Sanitary Sewer Pipe, 4 In. Dia.	LF	1,155.00	\$36.00	\$41,580.00	1,155.00	\$41,580.00	0.00	\$0.00	1155.00	\$41,580.00
B23	Shoring, Trench Safety System (\$1.00 min./LF)	LF	4,160.00	\$1.00	\$4,160.00	4,160.00	\$4,160.00	0.00	\$0.00	4160.00	\$4,160.00
B24	Plug Valve, 10 In.	EA	3.00	\$3,835.00	\$11,505.00	3.00	\$11,505.00	0.00	\$0.00	3.00	\$11,505.00
B25	Plug Valve, 6 In.	EA	2.00	\$3,770.00	\$7,540.00	2.00	\$7,540.00	0.00	\$0.00	2.00	\$7,540.00
B26	Plug Valve, 4 In.	EA	7.00	\$855.00	\$5,985.00	7.00	\$5,985.00	0.00	\$0.00	7.00	\$5,985.00
B27	12 In. Sewer Fittings	EA	1.00	\$500.00	\$500.00	1.00	\$500.00	0.00	\$0.00	1.00	\$500.00
B28	8 In. Sewer Fittings	EA	10.00	\$375.00	\$3,750.00	10.00	\$3,750.00	0.00	\$0.00	10.00	\$3,750.00
B29	6 In. Sewer Fittings	EA	1.00	\$120.00	\$120.00	1.00	\$120.00	0.00	\$0.00	1.00	\$120.00
B30	4 In. Sewer Fittings	EA	10.00	\$140.00	\$1,400.00	10.00	\$1,400.00	0.00	\$0.00	10.00	\$1,400.00
B31	Adjust Sewer Cleanout or Valve Box	EA	3.00	\$55.00	\$165.00	3.00	\$165.00	0.00	\$0.00	3.00	\$165.00
B32	AARV Assembly including Manifold and Soil Filter	EA	2.00	\$2,600.00	\$5,200.00	2.00	\$5,200.00	0.00	\$0.00	2.00	\$5,200.00
B33	Testing Pressure Sewer Pipe	LF	4,160.00	\$1.50	\$6,240.00	5,193.00	\$7,789.50	0.00	\$0.00	5193.00	\$7,789.50
B34	Sewer Cleanout	EA	1.00	\$1,100.00	\$1,100.00	1.00	\$1,100.00	0.00	\$0.00	1.00	\$1,100.00

SCHEDULE B SUBTOTAL					\$284,438.00		\$285,987.50		\$0.00		\$285,987.50
Sales Tax (8.4%):					\$23,892.79		\$24,022.95		\$0.00		\$24,022.95
Retainage (5%) - N/A Retainage Bond Posted											
SCHEDULE B TOTAL					\$308,330.79		\$310,010.45		\$0.00		\$310,010.45

CITY OF CAMAS PROJECT NO. S-566 Project Name: NW Friberg St/NE Goodwin Rd Roadway			PAY ESTIMATE: SEVEN PAY PERIOD: 1/01/2015 Through 1/31/2015 ORIGINAL CONTRACT AMOUNT: \$4,102,170.92				McDonald Excavating, Inc. 2719 Main Street Washougal, WA 98671 360-835-8794				
--	--	--	---	--	--	--	--	--	--	--	--

ITEM NO.	DESCRIPTION	UNIT	ORIGINAL QUANTITY	UNIT PRICE	CONTRACT TOTAL	QUANTITY PREVIOUS	TOTAL PREVIOUS	QUANTITY THIS EST.	TOTAL THIS EST.	QUANTITY TO DATE	TOTAL TO DATE
SCHEDULE C: GRASS VALLEY WETLAND MITIGATION											
C1	Clearing and Grubbing	AC	0.50	\$4,000.00	\$2,000.00	0.50	\$2,000.00	0.00	\$0.00	0.50	\$2,000.00
C2	High Visibility Fence	LF	1,905.00	\$2.00	\$3,810.00	1,905.00	\$3,810.00	0.00	\$0.00	1905.00	\$3,810.00
C3	Seeding, Fertilizing, Mulching	AC	0.50	\$12,000.00	\$6,000.00	0.00	\$0.00	0.00	\$0.00	0.00	\$0.00
C4	Compost Stock	LF	390.00	\$8.00	\$3,120.00	0.00	\$0.00	0.00	\$0.00	0.00	\$0.00
C5	Temporary Haul Road	LS	1.00	\$5,200.00	\$5,200.00	1.00	\$5,200.00	0.00	\$0.00	1.00	\$5,200.00
C6	Invasive Species Removal	LS	1.00	\$5,000.00	\$5,000.00	0.00	\$0.00	0.00	\$0.00	0.00	\$0.00
C7	PSIPE - Oregon Ash, 2-4'T Bare Root	EA	70.00	\$4.50	\$315.00	0.00	\$0.00	70.00	\$315.00	70.00	\$315.00
C8	PSIPE - Red Alder 2-4'T Bare Root	EA	40.00	\$4.50	\$180.00	0.00	\$0.00	40.00	\$180.00	40.00	\$180.00
C9	PSIPE - Black Cottonwood 2-4'T Bare Root	EA	10.00	\$4.50	\$45.00	0.00	\$0.00	10.00	\$45.00	10.00	\$45.00
C10	PSIPE - Cascara 2-4'T Bare Root	EA	14.00	\$4.50	\$63.00	0.00	\$0.00	14.00	\$63.00	14.00	\$63.00
C11	PSIPE - Western Crab Apple 2-4'T Bare Root	EA	10.00	\$4.50	\$45.00	0.00	\$0.00	10.00	\$45.00	10.00	\$45.00
C12	PSIPE - Nootka Rose 2-4'T Bare Root	EA	150.00	\$4.50	\$675.00	0.00	\$0.00	150.00	\$675.00	150.00	\$675.00
C13	PSIPE - Pacific Ninebark 2-4'T Bare Root	EA	100.00	\$4.50	\$450.00	0.00	\$0.00	100.00	\$450.00	100.00	\$450.00
C14	PSIPE - Black Hawthorn 2-4'T Bare Root	EA	144.00	\$4.50	\$648.00	0.00	\$0.00	144.00	\$648.00	144.00	\$648.00
C15	PSIPE - Vine Maple 2-4'T Bare Root	EA	44.00	\$4.50	\$198.00	0.00	\$0.00	44.00	\$198.00	44.00	\$198.00
C16	PSIPE - Red Osier Dogwood, Live Stake	EA	250.00	\$3.50	\$875.00	0.00	\$0.00	250.00	\$875.00	250.00	\$875.00
C17	PSIPE - Sitka Willow, Live Stake	EA	50.00	\$3.50	\$175.00	0.00	\$0.00	50.00	\$175.00	50.00	\$175.00
C18	PSIPE - Red Elderberry, 2-4'T Bare Root	EA	74.00	\$4.50	\$333.00	0.00	\$0.00	74.00	\$333.00	74.00	\$333.00
C19	PSIPE - Black Twinberry, 2-4'T Bare Root	EA	74.00	\$4.50	\$333.00	0.00	\$0.00	74.00	\$333.00	74.00	\$333.00
C20	PSIPE - Scouler Willow, Live Stake	EA	150.00	\$3.50	\$525.00	0.00	\$0.00	120.00	\$420.00	120.00	\$420.00
C21	Wildlife Snag	EA	2.00	\$650.00	\$1,300.00	2.00	\$1,300.00	0.00	\$0.00	2.00	\$1,300.00
C22	Habitat Logs	EA	2.00	\$550.00	\$1,100.00	2.00	\$1,100.00	0.00	\$0.00	2.00	\$1,100.00
C23	Brush Piles	EA	3.00	\$450.00	\$1,350.00	3.00	\$1,350.00	0.00	\$0.00	3.00	\$1,350.00
C24	PSIPE 2nd Year	LS	1.00	\$6,675.00	\$6,675.00	0.00	\$0.00	0.00	\$0.00	0.00	\$0.00
C25	Irrigation System	LS	1.00	\$16,680.00	\$16,680.00	0.90	\$15,012.00	0.00	\$0.00	0.90	\$15,012.00
C26	Wetland Mitigation Excavation and Haul	CY	1,550.00	\$13.00	\$20,150.00	1,550.00	\$20,150.00	0.00	\$0.00	1550.00	\$20,150.00
C27	Wetland Mitigation Topsoil Placement (Topsoil Type B)	CY	410.00	\$4.00	\$1,640.00	410.00	\$1,640.00	0.00	\$0.00	410.00	\$1,640.00

SCHEDULE C TOTAL (NON-TAXABLE)					\$78,885.00		\$51,562.00		\$4,755.00		\$56,317.00
Retainage (5%) - N/A Retainage Bond Posted											
SCHEDULE C TOTAL					\$78,885.00		\$51,562.00		\$4,755.00		\$56,317.00

CITY OF CAMAS PROJECT NO. S-566 Project Name: NW Friberg St/NE Goodwin Rd Roadway			PAY ESTIMATE: SEVEN PAY PERIOD: 1/01/2015 Through 1/31/2015 ORIGINAL CONTRACT AMOUNT: \$4,102,170.92				McDonald Excavating, Inc. 2719 Main Street Washougal, WA 98671 360-835-8794				
--	--	--	---	--	--	--	--	--	--	--	--

ITEM NO.	DESCRIPTION	UNIT	ORIGINAL QUANTITY	UNIT PRICE	CONTRACT TOTAL	QUANTITY PREVIOUS	TOTAL PREVIOUS	QUANTITY THIS EST.	TOTAL THIS EST.	QUANTITY TO DATE	TOTAL TO DATE
CHANGE ORDERS - SCHEDULE A: ROAD AND STORM											
2A	Clear Additional Trees from Sta 36+00 to 40+00 Right	LS	1.00	\$42,366.63	\$42,366.63	1.00	\$42,366.63	0.00	\$0.00	1.00	\$42,366.63
2B	Accelerate Contract Schedule due to 9-Day Delay	LS	1.00	\$18,611.55	\$18,611.55	1.00	\$18,611.55	0.00	\$0.00	1.00	\$18,611.55
2C	Stormwater Treatment Vault Upsize	LS	1.00	\$13,073.00	\$13,073.00	1.00	\$13,073.00	0.00	\$0.00	1.00	\$13,073.00
2D	additional Silt Fence	LF	1,500.00	\$2.50	\$3,750.00	1,500.00	\$3,750.00	0.00	\$0.00	1500.00	\$3,750.00
2F	Modify Field Inlet Drain Pipe, Sta. 14+09.07, 19+69.60	LS	1.00	\$2,518.00	\$2,518.00	1.00	\$2,518.00	0.00	\$0.00	1.00	\$2,518.00
2G	Modify Field Inlet Drain Pipe, Sta. 25+53.94, 28+70.96	LS	1.00	\$1,976.00	\$1,976.00	1.00	\$1,976.00	0.00	\$0.00	1.00	\$1,976.00
2H	Cut and Abandon Unmarked 8" Utility Pipe	LS	1.00	\$1,132.10	\$1,132.10	1.00	\$1,132.10	0.00	\$0.00	1.00	\$1,132.10
3A	Install 200 Amp Electrical Service for New Traffic Signal	LS	1.00	\$8,745.00	\$8,745.00	0.00	\$0.00	1.00	\$8,745.00	1.00	\$8,745.00
3B	Over-Exc and Gabion for Treatment Vault	LS	1.00	\$735.23	\$735.23	0.00	\$0.00	1.00	\$735.23	1.00	\$735.23
3C	Reset and Modify Ditch Inlet at STA 44+35.37	LS	1.00	\$1,729.76	\$1,729.76	0.00	\$0.00	1.00	\$1,729.76	1.00	\$1,729.76
3D	Furnish and Install GeoTech Fabric for Separation	SY	15,306.00	\$2.00	\$30,612.00	0.00	\$0.00	15,306.00	\$30,612.00	15306.00	\$30,612.00
3E	Pothole & Relocate Storm Pond Overflow Pipe for Signal Pole @ NW Corner	LS	1.00	\$9,934.94	\$9,934.94	0.00	\$0.00	1.00	\$9,934.94	1.00	\$9,934.94
3F	Storm Clean-Up and Mail Box Repair	LS	1.00	\$894.09	\$894.09	0.00	\$0.00	1.00	\$894.09	1.00	\$894.09
3G	Additional Sawcutting	LF	1,454.00	\$1.00	\$1,454.00	0.00	\$0.00	1,454.00	\$1,454.00	1454.00	\$1,454.00
3H	Remove Ditch Inlet on Goodwin at STA 107+70	LS	1.00	\$970.63	\$970.63	0.00	\$0.00	1.00	\$970.63	1.00	\$970.63
3I	Furnish & Install 2x4 Gabion Rock for Base Stabilization On NE 202nd	TN	34.19	\$40.00	\$1,367.60	0.00	\$0.00	34.19	\$1,367.60	34.19	\$1,367.60
3J	Furnish & Install Add'l Silt Fench	LF	535.00	\$2.50	\$1,337.50	0.00	\$0.00	535.00	\$1,337.50	535.00	\$1,337.50

SCHEDULE A SUBTOTAL (NON-TAXABLE)	\$141,208.03	\$83,427.28	\$57,780.75	\$141,208.03
Retainage (5%) - N/A Retainage Bond Posted				
SCHEDULE A TOTAL	\$141,208.03	\$83,427.28	\$57,780.75	\$141,208.03

CITY OF CAMAS PROJECT NO. S-566 Project Name: NW Friberg St/NE Goodwin Rd Roadway			PAY ESTIMATE: SEVEN PAY PERIOD: 1/01/2015 Through 1/31/2015 ORIGINAL CONTRACT AMOUNT: \$4,102,170.92				McDonald Excavating, Inc. 2719 Main Street Washougal, WA 98671 360-835-8794				
--	--	--	---	--	--	--	--	--	--	--	--

ITEM NO.	DESCRIPTION	UNIT	ORIGINAL QUANTITY	UNIT PRICE	CONTRACT TOTAL	QUANTITY PREVIOUS	TOTAL PREVIOUS	QUANTITY THIS EST.	TOTAL THIS EST.	QUANTITY TO DATE	TOTAL TO DATE
CHANGE ORDERS - SCHEDULE B: WATER AND SANITARY (TAXABLE ITEMS)											
2E	Over-Excavation for Mis-Marked Waterline at 202nd	LS	1.00	\$1,272.28	\$1,272.28	1.00	\$1,272.28	0.00	\$0.00	1.00	\$1,272.28
2I	Remove Concrete Thrust Block @ 12" San FM Stub	LS	1.00	\$2,086.29	\$2,086.29	1.00	\$2,086.29	0.00	\$0.00	1.00	\$2,086.29
3K	Install Bends for Hydrant at STA 34+97	LS	1.00	\$2,066.19	\$2,066.19	0.00	\$0.00	1.00	\$2,066.19	1.00	\$2,066.19
3L	Install Riser for Hydrant at STA 41+06.8	LS	1.00	\$1,357.34	\$1,357.34	0.00	\$0.00	1.00	\$1,357.34	1.00	\$1,357.34

SCHEDULE B SUBTOTAL					\$6,782.10		\$3,358.57		\$3,423.53		\$6,782.10
Sales Tax (8.4%):					\$569.70		\$282.12		\$287.58		\$569.70
Retainage (5%) - N/A Retainage Bond Posted											
SCHEDULE B TOTAL					\$7,351.80		\$3,640.69		\$3,711.11		\$7,351.80


CHANGE ORDERS - SCHEDULE C: GRASS VALLEY WETLAND MITIGATION											
3M	Furnish & Install Irrigation Point-of-Connection Pipe and Ftgs	LS	1.00	\$7,240.89	\$7,240.89	0.00	\$0.00	1.00	\$7,240.89	1.00	\$7,240.89

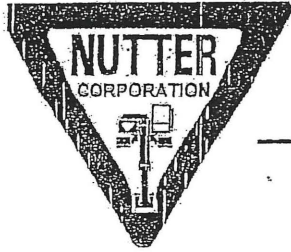
SCHEDULE C SUBTOTAL (NON-TAXABLE)					\$7,240.89		\$0.00		\$7,240.89		\$7,240.89
Retainage (5%) - N/A Retainage Bond Posted											
SCHEDULE C TOTAL					\$7,240.89		\$0.00		\$7,240.89		\$7,240.89

	CONTRACT TOTAL	TOTAL PREVIOUS	TOTAL THIS EST.	TOTAL TO DATE
SCHEDULE A, B & C ORIGINAL CONTRACT TOTAL	\$4,078,278.13	\$3,765,359.02	\$227,624.50	\$3,992,983.52
SCHEDULE A, B & C CHANGE ORDERS TO DATE	\$155,231.02	\$86,785.85	\$68,445.17	\$155,231.02
SCHEDULE A, B, C, & CHANGE ORDERS SUBTOTAL	\$4,233,509.15	\$3,852,144.87	\$296,069.67	\$4,148,214.54
SALES TAX (8.4%)	\$24,462.49	\$24,305.07	\$287.58	\$24,592.65
TOTAL CONTRACT	\$4,257,971.64	\$3,876,449.94	\$296,357.25	\$4,172,807.19
Retainage (5%) - N/A Retainage Bond Posted				
TOTAL		\$3,876,449.94	\$296,357.25	\$4,172,807.19

Account Distribution	Schedule Subtotals	Change Orders	Applicable Taxes	TOTAL
SCHED. A - ROAD & STORM ACCT. NUMBER: 314-00-595-300-65 THIS PAY EST:	\$222,869.50	\$57,780.75	N/A	\$280,650.25
SCHED. C - ROAD & STORM ACCT. NUMBER: 314-00-595-300-65 THIS PAY EST:	\$4,755.00	\$7,240.89	N/A	\$11,995.89
SCHED. B - WATER ACCT. NUMBER: 424-00-594-340-65 THIS PAY EST:	\$0.00	\$0.00	\$0.00	\$0.00
SCHED. B - SEWER ACCT. NUMBER: 424-00-594-350-65 THIS PAY EST:	\$0.00	\$0.00	\$0.00	\$0.00
SCHED. B - FIRE SUPPRESSION ACCT. NO.: 424-00-594-340-65 THIS PAY EST:	\$0.00	\$3,423.53	\$287.58	\$3,711.11
SCHEDULE B SUBTOTAL:	\$0.00	\$3,423.53	\$287.58	\$3,711.11
ALL SCHEDULES:	\$227,624.50	\$68,445.17	\$287.58	\$296,357.25

RFD ENTERED
 2/9/15

 Project Engineer	<u>2-12-15</u> Date	 Contractor	<u>2/12/2015</u> Date	 Project Manager	<u>2-12-15</u> Date
---	------------------------	---	--------------------------	--	------------------------



NUTTER CORPORATION
7211-A NE 43rd Avenue
Vancouver, WA 98661-1311

SS-568

(360) 573-2000
Fax (360) 759-2244

CC: Pam

Retainage: 419-00-223-400-00
(419-00-594-530-65)

PM codes: Constr.
Cnstr.

Elm
RFC ENTERED
8/29/15
RFC ENTERED
8/13/14

06/30/14
Job # 140107
Project: Vector Facility
Pay Est # 2 breakdown (as of June 30, 2014)

Owner: City of Camas Public Work
1620 SE 8th Ave
Camas, WA 98607

No.	Description	Unit	Estimated Quantity	Unit Price	Total Price	Previous Quantity	Total Price	This Est. Quantity	Total Price	Total Quantity	Total Price	Total % Complete
1	Mobilization	ls	1.00	\$ 18,000.00	\$ 18,000.00	1.00	\$ 18,000.00	0.00	\$ -	1.00	\$ 18,000.00	100%
2	Removal of Structures and Obstructions	ls	1.00	\$ 3,000.00	\$ 3,000.00	1.00	\$ 3,000.00	0.00	\$ -	1.00	\$ 3,000.00	100%
3	Structure Excavation Class A Incl Haul	cy	100.00	\$ 35.00	\$ 3,500.00	100.00	\$ 3,500.00	0.00	\$ -	100.00	\$ 3,500.00	100%
4	Solid Wall PVC Storm Sewer Pipe 6" Diam	lf	166.00	\$ 25.00	\$ 4,150.00	166.00	\$ 4,150.00	0.00	\$ -	166.00	\$ 4,150.00	100%
5	Catch Basin Type 1	ea	1.00	\$ 1,100.00	\$ 1,100.00	1.00	\$ 1,100.00	0.00	\$ -	1.00	\$ 1,100.00	100%
6	PVC Sanitary Sewer Pipe 6" Diam	lf	38.00	\$ 45.00	\$ 1,710.00	38.00	\$ 1,710.00	0.00	\$ -	38.00	\$ 1,710.00	100%
7	Sewer Cleanout	ea	3.00	\$ 400.00	\$ 1,200.00	3.00	\$ 1,200.00	0.00	\$ -	3.00	\$ 1,200.00	100%
8	Trench Drain	lf	45.00	\$ 140.00	\$ 6,300.00	45.00	\$ 6,300.00	0.00	\$ -	45.00	\$ 6,300.00	100%
9	Block Retaining Wall	sf	648.00	\$ 21.00	\$ 13,608.00	648.00	\$ 13,608.00	0.00	\$ -	648.00	\$ 13,608.00	100%
10	Gravel Base	cy	17.00	\$ 48.00	\$ 816.00	17.00	\$ 816.00	0.00	\$ -	17.00	\$ 816.00	100%
11	Concrete Class 4000	cy	12.00	\$ 360.00	\$ 4,320.00	12.00	\$ 4,320.00	0.00	\$ -	12.00	\$ 4,320.00	100%
12	St Reinf Bar #4	lb	470.00	\$ 2.00	\$ 940.00	470.00	\$ 940.00	0.00	\$ -	470.00	\$ 940.00	100%
13	Earth Embankment Compaction	cy	32.00	\$ 20.00	\$ 640.00	32.00	\$ 640.00	0.00	\$ -	32.00	\$ 640.00	100%
14	Crushed Surfacing Base Course	cy	57.00	\$ 60.00	\$ 3,420.00	57.00	\$ 3,420.00	0.00	\$ -	57.00	\$ 3,420.00	100%
15	HMA CI-1/2" PG 64-22	tn	80.00	\$ 110.00	\$ 8,800.00	80.00	\$ 8,800.00	0.00	\$ -	80.00	\$ 8,800.00	100%
16	Roof Structure	ls	1.00	\$ 86,629.60	\$ 86,629.60	0.00	\$ -	1.00	\$ 86,629.60	1.00	\$ 86,629.60	100%
17	Roof Structure Foundation	cy	48.30	\$ 550.00	\$ 26,565.00	48.30	\$ 26,565.00	0.00	\$ -	48.30	\$ 26,565.00	100%
18	Bollard	ea	14.00	\$ 600.00	\$ 8,400.00	14.00	\$ 8,400.00	0.00	\$ -	14.00	\$ 8,400.00	100%
Contract Total:					\$ 193,098.60		\$ 106,469.00		\$ 86,629.60		\$ 193,098.60	

Subtotal		\$ 106,469.00	\$ 86,629.60	\$ 193,098.60
Sales Tax	8.4 %	\$ 8,943.40	\$ 7,276.89	\$ 16,220.28
Total Earned		\$ 115,412.40	\$ 93,906.49	\$ 209,318.88
- Retainage	5.0 %	\$ (5,323.45)	\$ (4,331.48)	\$ (9,654.93)
Amount Owed		\$ 110,088.95	\$ 89,575.01	\$ 199,663.95
Amount Paid		\$ -	\$ -	\$ -
Amount Due		\$ 110,088.95	\$ 89,575.01	\$ 199,663.95

Don't Print!!!

Pay Est. #1 and #2 Combined
payment processed on 8/17/15

Amount Due

S-589A

INVOICE



2014

OFFICE: EVERETT, WASHINGTON
PHONE: 425-551-3100
CONTACT: ASHLEY TONSGARD

DATE: 11/30/2014
BILL TO: CITY OF CAMAS
P.O. BOX 1055
CAMAS, WA 98607-0055
ATTN: DENIS RYAN

INVOICE: 747342
APPLICATION: 3
ADJUSTMENT: 0
GRANITE JOB: 480390
CUSTOMER: 289830

112-00-213-400-00

FOR SERVICES RENDERED ON : VAN - 2014 CAMAS GRIND&OVERLAY
LAKE ST. CAMAS

PERIOD THROUGH: 11/30/2014

PAYMENT SUMMARY

1. CONTRACT	\$319,319.00
2. APPROVED CHANGE ORDERS	\$2,200.00
3. CONTRACT TOTAL TO DATE	\$321,519.00
4. WORK COMPLETED TO DATE	\$381,569.88
5. LESS RETENTION @ 5.00 %	\$19,078.50
6. TOTAL AMOUNT DUE TO DATE	\$362,491.38
7. LESS PREVIOUSLY INVOICED	\$360,401.38
8. CURRENT AMOUNT DUE	\$2,090.00

PLEASE MAIL REMITTANCE TO:
GRANITE CONSTRUCTION COMPANY
Granite Construction Company
PO Box 742478
Los Angeles, CA 90074-2478

TERMS: A/R Materials
LATE PAYMENT PENALTY OF 1.5% WILL BE ADDED TO PAST DUE AMOUNTS MONTHLY.



DATE: 11/30/2014

TO : CITY OF CAMAS
 P.O. BOX 1055
 CAMAS, WA 98607-0055
 ATTN: DENIS RYAN

INVOICE 747342

APPLICATION 3

ADJUSTMENT 0

CUSTOMER CONTRACT

PERIOD THROUGH 11/30/2014

CHANGE ORDER	BID ITEM	DESCRIPTION	ORIGINAL CONTRACT				THIS PERIOD			TOTAL TO DATE		
			Unit	Quantity	Unit Price	Contract Amount	Quantity	Amount	Retainage	Quantity	Amount	Retainage
000	00001	MOBILIZATION	PC	100.00	22.3150	2,231.50	0.00	0.00	0.00	458.50	10,231.50	511.58
000	00002	PROJECT TEMPORARY TRAFFIC	PC	100.00	50.0000	5,000.00	0.00	0.00	0.00	240.00	12,000.00	600.00
000	00003	PORTABLE CHANGEABLE MESSA	EA	3.00	100.0000	300.00	0.00	0.00	0.00	2.00	200.00	10.00
000	00004	EROSION / WATER POLLUTION	PC	100.00	10.0000	1,000.00	0.00	0.00	0.00	200.00	2,000.00	100.00
000	00005	CONSTRUCTION GEOTEXTILE F	SY	1,650.00	0.7500	1,237.50	0.00	0.00	0.00	0.00	0.00	0.00
000	00006	CRUSHED SURFACING BASE CO	CY	100.00	10.0000	1,000.00	0.00	0.00	0.00	0.00	0.00	0.00
000	00007	HMA CL. 1/2IN PG64-22	TN	3,100.00	78.0000	241,800.00	0.00	0.00	0.00	3,385.66	264,081.48	13,204.08
000	00008	HMA FOR PAVEMENT REPAIR	TN	185.00	120.0000	22,200.00	0.00	0.00	0.00	217.55	26,106.00	1,305.30
000	00009	PAVEMENT REPAIR EX. INCL.	SY	225.00	7.0000	1,575.00	0.00	0.00	0.00	0.00	0.00	0.00
000	00010	PLANING BITUMINUOUS MAT.	SY	1,425.00	7.0000	9,975.00	0.00	0.00	0.00	1,289.78	9,028.46	451.42
000	00011	PLANING BIT. 1IN DEPTH	SY	25,000.00	1.0500	26,250.00	0.00	0.00	0.00	40,926.13	42,972.44	2,148.62

CHANGE ORDER	BID ITEM	DESCRIPTION	ORIGINAL CONTRACT			THIS PERIOD			TOTAL TO DATE			
			Unit	Quantity	Unit Price	Contract Amount	Quantity	Amount	Retainage	Quantity	Amount	Retainage
000	00012	TEMP PAVEMENT MARKING	LF	7,500.00	0.5000	3,750.00	0.00	0.00	0.00	12,300.00	6,150.00	307.50
000	00013	UTILITY MANHOLE/SERVICE/	EA	20.00	150.0000	3,000.00	0.00	0.00	0.00	44.00	6,600.00	330.00
001	CCO	INTALL TRAFFIC LOOP		0.00	0.0000	2,200.00	0.00	2,200.00	110.00	0.00	2,200.00	110.00
TOTAL						321,519.00	0.00	2,200.00	110.00	59,063.62	381,569.88	19,078.50

Clark Public Utilities Commercial Industrial Custom Project Program Participation Agreement

This Agreement is entered into on 2/2/2015 between Clark Public Utilities (the "Utility") and City of Camas ("Customer"), who is the owner/representative authorized to perform improvements on the building described below.

Customer is a commercial or industrial client of the Utility and maintains or manages facilities located at 1620 SE 8th Avenue. Customer wishes to make certain energy efficiency improvements (Aeration and UV Upgrades) to this facility under the Utility's Commercial Industrial Custom Project Program.

Under the Custom Project Program, the Utility provides, at its discretion, financial incentives for equipment installed pursuant to program guidelines.

Customer participation in the Custom Project Program and eligibility for rebates hereunder, is subject to the following terms and conditions:

1. Customer will install certain energy efficiency measures, as described in the custom project proposal documents, within the facility at the above-described location. No equipment may be installed before the project is approved by the Utility. The Utility recommends that Customer receives preapproval prior to ordering equipment in order to ensure the project will be accepted by the Utility (meets minimum program requirements).
2. Customer will assume full responsibility for the design and installation of the custom project and will be solely responsible for the quality, performance and durability of the equipment.
3. Customer will assume full responsibility for compliance with all applicable federal, state and local codes and permitting requirements during the installation of the energy efficiency project, including all environmental regulations pertaining to the removal and disposal of all materials and equipment.
4. In order to be considered eligible for incentive payments from the Utility, Customer shall provide the Utility with all documentation pertaining to the custom project.
 - a. Project documentation must show the equipment purchased and/or work performed for each approved measure and must include the following material/information: (1) itemized sales slips, itemized invoices; (2) size, type, make, and model/part number of equipment purchased, date of the equipment purchase, and final amounts paid to the installer; (3) a detailed description of the installation and/or other labor charges (including in-house labor) for the measures (showing the date the work was performed, hours worked and labor rate).
 - b. Customer shall retain and make available to the Utility all project documentation for no less than 12 months from the date of receipt of any incentive payments.
5. Customer will not be eligible for any financial incentive payments for a custom project unless all documentation is provided to the Utility and payment is approved by BPA.
6. Upon completion of the custom project, the Utility will complete pre-approved measurement & verification, which may include on-site monitoring and inspection of the installed measures, as part of its evaluation of the Customer's eligibility for incentive payments.
7. Customer understands that the Utility makes no warranties concerning the custom project (either expressed or implied) and assumes no liability or responsibility for such work, including but not limited to, the adequacy of the design/construction of the project, the suitability/safety of the installed equipment or the actual energy/cost savings for the efficiency measures.
8. To the fullest extent allowable by law, Customer agrees to indemnify, defend (at the Utility's option) and hold harmless the Utility, its officers and its employees from all claims, loss or damages, including attorney's fees, for personal injury, death or property damage arising from, or in connection with, the performance of this Agreement, Customer's participation in the Custom Project Program or the efficiency measures taken thereunder, except to the

Commercial Industrial Custom Project Program, Clark Public Utilities (revised 11-18-13)

extent such liability is occasioned by the negligence of the Utility. With respect to a claim for indemnification under this Agreement on account of bodily injury (including death) to any employee of the Customer, the Customer agrees that it shall not be entitled to assert an immunity against the Utility based upon workers' compensation laws set forth in the Washington Industrial Insurance Act, Title 51 RCW, limiting its indemnification obligations under this Agreement, provided that, this section will not be interpreted or construed as a waiver of Contractor's right to assert directly against any of its own employees or such employee's estate or other representatives any such immunity, defense or protection that may be afforded by workers' compensation laws set forth in the Washington Industrial Insurance Act, Title 51 RCW.

9. Customer agrees to assist the Utility in evaluating the effectiveness of the energy efficiency project. This may include Customer's participation in a survey, follow-up site visits at the improved facility, the Customer providing copies of cancelled check(s) to the installer and/or equipment supplier and the release of Utility bills and other information pertinent to the performance of the installed measures.
10. All projects performed under this program are subject to audit by the Utility. Customer agrees to fully cooperate in any such audit and understands that if such cooperation is not forthcoming, financial incentive payments made to the Customer will be returned to the Utility. In addition, if, as a result of an audit, it is determined that Customer has received a financial incentive payment in excess of their eligible amount; Customer shall return to the Utility any refunds/overpayments within 30 days of such request. Customer understands that if such funds are not returned to the Utility upon demand, an equal amount will be applied the Customer's account with the Utility.

The planned completion date for this project is 12/31/2015. If installation will not be complete by this date, the Customer shall notify the Utility of the revised completion date, and the Utility will advise if an extension is approved. The Customer has until 01/31/2016 to install the energy efficiency measures and submit the invoice(s) to the Utility, otherwise the Utility cannot guarantee that the approved incentive will be available for this project. Customer is solely responsible for notifying Utility regarding changes to the completion date.

By signature below, the undersigned hereby acknowledges that he/she is the building owner or the authorized representative to make these improvements at this facility.

Customer (Building Owner/Authorized Representative)

Name: _____
Title: _____
Signature: _____ Date: _____

Make Check Payable To: _____
(Owner or legally authorized representative of the building) **

Mail Check to (address): _____

Attention to (name): _____

** If "payable to" is entity other than the owner or legally authorized customer representative, customer to acknowledge this assignment through signature below:

Name: _____
Title: _____
Signature: _____ Date: _____

Participating Utility Representative

Name & Title: Bill Hibbs
Signature: Bill Hibbs Date: 11/14/2014



STAFF REPORT
Final Plat for Lake Hills Subdivision

File No. FP14-05

(Related File: SUB12-01, MajVar14-03, and MinMod14-09)

February 11, 2015

TO: Mayor Higgins
 City Council

MEETING DATE: February 17, 2015

FROM: Wes Heigh, Project Manager
 Sarah Fox, Senior Planner

LOCATION: The property is located on the north side of Lake Road and east of Jackson Court.
 Tax Parcel Number 084840-000

OWNER: Lake Hills, LLC

APPLICABLE LAW: The application was submitted on July 29, 2014, and the applicable codes are those codes that were in effect at the date of application. Camas Municipal Code Chapters (CMC): Title 18 Zoning (not exclusively): CMC Chapter 17.21 Procedures for Public Improvements; and CMC Chapter 18.55 Administration and Procedures; and RCW Chapter 58.17.

BACKGROUND INFORMATION

• 53 Lots	• Total area: 18.3 acres
• Zoning: Single-family residential (R-10)	• Recreational open space: 2.67 acres

Lake Hills Subdivision (File #SUB12-01) received preliminary plat approval April 6, 2013; to subdivide approximately 18.1 acres of residentially zoned land (R-10) into 53 single-family lots, with 11 lots along NW Lake Road, and 42 lots that will be accessed from Hood Street. The property includes 2.6 acres of open space, and provides a local connector trail between NW Lake Road and Hood Street. A minor modification (File #MinMod14-09) was approved on October 22, 2014, in regard to wall construction on Lake Road. The conditions of that approval are included. A major variance application (File #MajVar14-03) was submitted on December 10, 2014, and a decision has not yet been issued.

Staff found that the application met the requirements of Final Plat approval in accordance with CMC§17.21.060. This staff report addresses compliance with the conditions of approval of SUB12-01 and MinMod14-09, and the criteria for final plat approval.

Conditions of Approval for SUB12-01	Findings
Engineering	
1. Stormwater treatment and control facilities shall be designed in accordance with the 1992 Puget Sound Stormwater Management Manual. Final stormwater calculations shall be submitted at the time of final construction plan submittal.	Submitted and constructed
2. All construction plans will be prepared in accordance with City of	Complied

<p>Camas standards. The plans will be prepared by a licensed civil engineer in Washington State and submitted to the City for review and approval.</p>	
<p>3. The applicant will be required to purchase all permanent traffic control signs, street name signs, street lighting and traffic control markings and barriers for the improved development in accordance with CMC 17.19.030 (I) & (J). The City will supply the list of required signs, markings and barriers at the time paving is scheduled.</p>	<p>Complied</p>
<p>4. A 3% construction plan review and inspection fee shall be required for this development. The fee will be based on an engineer's estimate or construction bid. The specific estimate will be submitted to the City for review and approval. The fee will be paid prior to the construction plans being signed and released to the applicant.</p>	<p>Fees were paid</p>
<p>5. Any entrance structures or signs proposed or required for this project will be reviewed and approved by the City. All designs will be in accordance with applicable City codes. The maintenance of the entrance structure will be the responsibility of the owners.</p>	<p>Easements on Lots 1 and 28 for entrance signs are provided on the plat</p>
<p>6. In the event that any item of archaeological interest is uncovered during the course of a permitted ground disturbing action or activity, all ground disturbing activities shall immediately cease and the applicant shall notify the Community Development Department and DAHP.</p>	<p>In compliance</p>
<p>7. Final as-built construction drawing submittals shall meet the requirements of the Camas Design Standards Manual.</p>	<p>Will comply upon final plat approval</p>
<p>8. Installation of automatic fire sprinkler systems that comply with NFPA 13D or 13R will be required in all new dwellings. A note to this effect shall be placed on the face of the final plat.</p>	<p>Plat note 8</p>
<p>9. The applicant shall demonstrate to the city's satisfaction that adequate sight distance is available at all intersections and along all roadway curves. The applicant shall modify building setbacks, create sight distance easements, and or provide other acceptable measures that will ensure adequate sight distance exists.</p>	<p>No additional setbacks were required for sight distance.</p>
<p>10. The applicant shall be responsible for any necessary restriping of the NW Lake Road center turn lane at the private access road intersection as determined by the city.</p>	<p>Complied</p>
<p>11. A homeowner's association (HOA) will be required for this development. The applicant will be required to furnish a copy of the CC&R's for the development to the City for review and approval. Specifically, the applicant will need to make provisions in</p>	<p>CC&R's are approved and provisions are provided as noted.</p>

<p>the CC&R's for maintenance of the stormwater detention and treatment facilities, any storm drainage system outside of the city right of way. Additionally, the applicant will need to make provisions for maintenance of all community fencing, landscaping, irrigation, retaining walls, private access roads and open space tracts.</p>	
<p>12. The applicant shall modify the final design to eliminate the emergency access between Lake Road and the private road serving proposed Lots 43- 48.</p>	<p>Complied</p>
<p>13. The engineers for the City and the applicant can review the soils on the site to determine whether a liner or other measures are necessary to prevent water infiltrating through the bottom of the detention pond and causing elevated groundwater levels or flooding on adjacent properties.</p>	<p>Complied</p>
<p>Planning:</p>	
<p>14. The applicant shall provide to the city a final approval letter from DAHP, indicating approval of a plan for the site prior to ground disturbing activities commencing on site.</p>	<p>Complied</p>
<p>15. The applicant shall provide a copy of the wetland jurisdictional determination from the US Army Corps of Engineers prior to the site construction plan approval.</p>	<p>Permit #NWS-2013-159</p>
<p>16. Prior to earth disturbing activities, the applicant shall provide a copy of the purchase agreement from the Columbia River Wetland Mitigation Bank (CRWMB), or an alternative mitigation site must be submitted and approved by the city. An alternative site to CRWMB, shall require submittal of a critical area report in accordance with CMC§16.50.140* and revised wetland mitigation plan for alternate site in accordance with CMC§16.50.180* Mitigation plan requirements. (*vested CMC)</p>	<p>Complied. Letter is dated March 6, 2014</p>
<p>17. The yard setbacks shall be corrected as follows: side and corner rear at 5 feet; side flanking a street at 20 feet; rear at 25 feet; and minimum frontage on a cul-de-sac-or curve at 30 feet; Lots 43 – 48, front as proposed in Exhibit I; all other lots, front at 20 feet.</p>	<p>Setbacks are in compliance</p>
<p>18. Any lot with less than a twenty (20) foot front yard setback shall provide a minimum two (2) off-street parking spaces on the driveway apron in addition to two (2) parking spaces in the garage. Garages facing a street or private drive shall be setback a minimum twenty (20) from the right of way or easement in order to accommodate vehicle parking in front of the garage.</p>	<p>Setbacks are in compliance</p>
<p>19. A single sales office in a model home for purposes of selling lots within the development may be located at Lot 30, and remain until</p>	<p>Will comply</p>

50% of lots are sold or two years after Certificate of Occupancy was issued, whichever is less. After such time, the sales office in the home or the trailer must be removed. Hours of operation of sales office shall be established and approved with Certificate of occupancy.	
Fire:	
20. Automatic life safety residential fire sprinkler system designed and installed in accordance with NFPA 13D is required in all new dwellings. CMC Chapter 17.19.	Plat note 8
21. A separate permit with the Fire Marshal's office is required for any underground tank removal/disposal or abandoning in place. IFC 105.7.5, 3404.2.13.1.4., 3404.2.14.	No tanks were found.
22. Onsite fire hydrants required contact fire department for locations. IFC Appendix C Sec. C105	In compliance
23. Required distance from a fire hydrant may be doubled when approved automatic fire sprinklers are installed. IFC Appendix C Table C 105.1, CMC§17.19.040(C.4.a).	In compliance
24. Provide plan for approval dealing with adequate parking enforcement on private roads. CMC§17.19.040(A)(9).	Provisions are in CC&R's
25. Within thirty (30) days of completion of site clearing, Owner's arborist will revisit the site to identify and designate for removal any additional hazardous trees, including those on trailheads or those on the City parcel that would jeopardize the development, public health, safety or welfare. Owner will remove identified hazardous trees during site development with the review and approval of the Director.	Reports received. No additional trees have been approved for removal at this time.
SEPA MDNS (file #SEPA12-14)	
<u>Checklist item 1.h. Earth:</u> An Erosion Control Plan consistent with vested City requirements to include compliance with the Stormwater Management Manual for Western Washington, February 2005 shall be prepared and submitted for review and approval, and implemented prior to any earth disturbing activities. Additional erosion control measures shall be implemented consistent with best management practices as necessary to control erosion.	Complied
<u>Checklist item 2.c. Air</u> – Fugitive emissions associated with construction must be controlled at the excavation site, during transportation of excavated material, and at any disposal site. During dry weather months, the contractor shall provide a dust control plan (i.e.: the use of watering trucks) and utilize best practices in reducing impacts from dust.	Complied
<u>Checklist item 3.d. Water</u> -In order to mitigate potential on-site wetland impacts, any wetland not approved to be filled through the	Offsite mitigation was approved at Columbia River

<p>Preliminary Plat process shall have temporary construction fencing placed around the wetland and associated buffers prior to tree removal or earthwork on site; Prior to final acceptance of site improvements, permanent signage at the rear of every lot adjacent to the preservation area with text provided by the City shall be installed; and prior to final acceptance of site improvements permanent continuous fencing shall be installed at the rear of lots adjacent to the stated wetlands and buffers. The applicant shall post a bond or other surety for the estimated costs of maintenance and monitoring of the mitigation site pursuant to vested CMC§16.50.250 for a period of five years after final plat approval, unless applicant receives approval at the Columbia River Wetland Mitigation Bank, then no mitigation bond will be required.</p>	<p>Wetland Mitigation Bank as noted above.</p>
<p><u>Checklist item 4.d. Plants-</u> The applicant shall provide temporary, construction fencing around the drip line of significant trees to be retained as identified by the arborist of record. Temporary fencing shall be in place prior to any earthwork activities and remain in place until Final Acceptance of site improvements. Final grading and site plans shall include the location of significant trees that are identified to be retained at the boundary of the preservation areas (Open Space Tract “A” and City Parcel) and shall be consistent with the intent to retain these trees.</p>	<p>In compliance</p>
<p><u>Checklist item 7.b.3. Noise –</u> In order to mitigate noise impacts to the surrounding area, construction activities shall be limited to 7:00 a.m. to 7:00 p.m., Monday through Friday, 8:00 a.m. to 5:00 p.m. Saturdays, and no construction activity on Sundays or City observed holidays. Equipment shall be properly muffled to federal standards and are restricted to operation during construction hours.</p>	<p>In compliance</p>
<p>Conditions of Approval for MinMod14-09</p>	
<p>The maximum height for the fence/wall at grade along Lake Road is 6’ for lots 43-48.</p>	<p>A wall has been installed to meet sidewalk level. The additional height will be completed by lot owners.</p>
<p>The applicant shall apply for a major variance for a 6’ fence along Lake Road for lots 49-53. Height will be measured from the top of sidewalk grade.</p>	<p>A major variance application was submitted on December 10, 2014 and is under review.</p>
<p>City preference is to leave the existing Lake Road retaining wall in place as this will be least disruptive to the existing sidewalk and 14” waterline located under the back (North) edge of the sidewalk.</p>	<p>Finding, not a condition</p>
<p>The applicant will need to connect the existing Lake Road retaining wall drains into the sound wall drainage system. (The city may want to verify that our drainage system is operational and functioning prior to backfilling between the walls.)</p>	<p>Inspected and complies</p>

The current structural wall design submitted by Pahlisch Homes does not contemplate backfill depths of approximately 2' to 8.5' between the city's existing retaining wall on Lake Road and the proposed sound wall. The wall design will need to be re-evaluated for the additional backfill loading.	Complied
The final engineering design of the sound wall shall be completed by a licensed Washington State Engineer with expertise in structural design. The final sound wall design shall be evaluated by a licensed Washington State geotechnical engineer prior to submittal to the city for review and approval. Structural calculations shall demonstrate adequate factors of safety for both static and seismic conditions evaluating sliding, overturning and bearing capacity.	GeoPacific submitted reports and performed inspections as required.
The applicant will be responsible for all geotechnical and field inspections during construction of the sound wall to ensure all design parameters are being met. The applicant shall submit all inspection reports to the city along with a stamped, final acceptance letter and signoff by the licensed design professionals that designed and/or reviewed the wall.	Complied
The applicant shall provide a maintenance and drainage indemnification agreement specifying each parties responsibility for wall maintenance and drainage maintenance.	Complied
There shall be no tree removal allowed in Tract B. The wall may be relocated or shortened if so desired by the applicant.	Complied
The wall shall not be located within the public ROW.	Complied
A final landscaping plan shall be submitted to the city for review and approval for the proposed landscaping between the existing sidewalk on Lake Road and the proposed sound wall as well as for Tract B.	Submitted November 3, 2014
The applicant will be required to mitigate for significant tree removal at a ratio of 2:1. Minimum tree size shall be 2" caliper for deciduous trees and minimum 6' tall for evergreen trees. As discussed in the report the applicant shall provide 50 mitigation trees to be planted in the landscaping strip and in Tract B. The applicant shall submit a planting plan showing planting details and specific locations for the mitigation planting.	Planted in Tract B as required.
The applicant shall remove and salvage for the city, the existing chain link fence. The applicant shall dispose of the posts and rails.	Complied

Final Plat Criteria for Approval (CMC 17.21.060-C)

1. That the proposed final plat bears the required certificates and statements of approval;
2. That the title insurance report furnished by the developer/owner confirms the title of the land, and the proposed subdivision is vested in the name of the owner(s) whose signature(s) appears on the plat certificate;
3. That the facilities and improvements required to be provided by the developer/owner have been completed or, alternatively, that the developer/owner has submitted with the

proposed final plat an improvement bond or other security in conformance with CMC 17.21.040;

4. That the plat is certified as accurate by the land surveyor responsible for the plat;
5. That the plat is in substantial conformance with the approved preliminary plat; and
6. That the plat meets the requirements of Chapter 58.17 RCW and other applicable state and local laws which were in effect at the time of preliminary plat approval.

Findings: The submitted plat meets the requirements of CMC 17.21.060-C, is consistent with the applicable conditions of approval, and with the applicable state and local regulations.

Recommendation

Staff recommends that Council **APPROVE** the final plat of Lake Hills Subdivision (File #FP14-05) as submitted.

PREPARED BY:
MINISTER AND GLAESER
SURVEYING, INC.
2200 E. EVERGREEN BLVD.
VANCOUVER, WA. 98661
(360) 694-3313

NOTES:

- 1) THIS PLAT IS SUBJECT TO CONDITIONS SET FORTH IN THE CITY OF CAMAS DECISIONS FOR THIS SUBDIVISION (CITY FILE: SUB 12-01 LAKE HILLS)
- 2) NO BUILDING PERMITS SHALL BE ISSUED UNTIL THIS SUBDIVISION IS GRANTED FINAL ACCEPTANCE IN ACCORDANCE WITH CMC 17.21.070.
- 3) A HOMEOWNERS ASSOCIATION (HOA) WILL BE REQUIRED FOR THIS DEVELOPMENT. COPIES OF THE C.C.&R'S SHALL BE SUBMITTED AND ON FILE WITH THE CITY OF CAMAS.
- 4) A RIGHT OF ENTRY IS HEREBY GRANTED TO THE CITY OF CAMAS FOR THE REPAIR AND MAINTENANCE OF THE STEF AND STEP SEWER SYSTEMS.
- 5) ALL COSTS ASSOCIATED WITH THE INSTALLATION OF THE STEF (LOTS 1-42) AND STEP (LOTS 43-53) SYSTEMS FOR INDIVIDUAL LOTS WILL BE THE RESPONSIBILITY OF SAID INDIVIDUAL LOT OWNERS.
- 6) NO FURTHER SHORT PLATTING OR SUBDIVIDING WILL BE PERMITTED ONCE THE FINAL PLAT HAS BEEN RECORDED.
- 7) THE LOTS IN THIS SUBDIVISION ARE SUBJECT TO TRAFFIC IMPACT FEES, SCHOOL IMPACT FEES, AND PARK/OPEN SPACE IMPACT FEES. EACH NEW DWELLING WILL BE SUBJECT TO THE PAYMENT OF APPROPRIATE IMPACT FEES AT THE TIME OF BUILDING PERMIT ISSUANCE.
- 8) AUTOMATIC FIRE SPRINKLER SYSTEMS DESIGNED AND INSTALLED IN ACCORDANCE WITH NFPA 13D ARE REQUIRED IN ALL DWELLINGS.
- 9) IN THE EVENT THAT ANY ITEM OF ARCHAEOLOGICAL INTEREST IS UNCOVERED DURING THE COURSE OF A PERMITTED GROUND DISTURBING ACTION OR ACTIVITY, ALL GROUND DISTURBING ACTIVITY SHALL IMMEDIATELY CEASE AND THE APPLICANT SHALL NOTIFY THE PUBLIC WORKS DEPARTMENT AND DAHP.
- 10) MAXIMUM BUILDING LOT COVERAGE IS 35%.
- 11) TRACT "A" IS DEDICATED TO THE H.O.A. AS A STORMWATER FACILITY TO BE MAINTAINED BY THE H.O.A.
- 12) TRACT "B" IS DEDICATED TO THE H.O.A. AS NATURAL OPEN SPACE AND SHALL REMAIN IN ITS NATURAL STATE UNLESS OTHERWISE APPROVED BY THE CITY COUNCIL.
- 13) TRACT "C" IS DEDICATED TO THE H.O.A. AS A LANDSCAPE AREA TO BE MAINTAINED BY THE H.O.A.
- 14) TRACT "D" IS DEDICATED TO THE H.O.A. AS A PRIVATE ACCESS ROAD TO BE MAINTAINED BY THE H.O.A. THE CITY OF CAMAS IS GRANTED A SEWER AND UTILITY EASEMENT OVER TRACT "D".
- 15) **YARD SETBACKS ARE AS FOLLOWS:**
SIDE AND CORNER REAR YARD: 5 FEET
SIDE YARD FLANKING A STREET: 20 FEET
REAR YARD: 25 FEET
MINIMUM FRONTAGE ON A CUL-DE-SAC OR CURVE: 30 FEET
FRONT YARD LOTS 43-48: PROVIDED ON SHEET 4 OF THIS PLAT
FRONT YARD ALL OTHER LOTS: 20 FEET

DEED REFERENCE:

GRANTOR: ARTHUR PICULELL
GRANTEE: MARTIN C. PEETS ETAL
AF NO. 5064067 D
DATE: 04-11-2014

SURVEY REFERENCES:

- 1) LDC SURVEY BOOK 54 PAGE 153
- 2) LACAMAS WOODS BOOK 311 PAGE 017
- 3) FOREST GLEN BOOK 311 PAGE 389
- 4) LACAMAS SHORES PHASE 6D BOOK "J" PAGE 559
- 5) LACAMAS SHORES PHASE 6B BOOK "J" PAGE 157
- 6) LACAMAS SHORES PHASE 2 BOOK "H" PAGE 417
- 7) COONEY SURVEY BOOK 49 PAGE 186
- 8) RENTON SURVEY BOOK 55 PAGE 130
- 9) SPOSITO SHORT PLAT BOOK 2 PAGE 424
- 10) FOREST HILLS BOOK "H" PAGE 898

MINISTER AND GLAESER SURVEYING, INC. MAKES NO WARRANTIES AS TO MATTERS OF UNWRITTEN TITLE SUCH AS ADVERSE POSSESSION, ACQUIESCENCE, ESTOPPEL, ETC.

A FIELD TRAVERSE WAS PERFORMED USING A THREE SECOND TOTAL STATION. THE FIELD TRAVERSE MET THE MINIMUM STANDARDS FOR SURVEYS AS DESIGNATED IN WAC 332-130-090. ALL CORNERS NOTED AS FOUND WERE VISITED IN JUNE 2014.

DWG FILE: 06586.DWG DRAWN BY: NG PROJ MGR: DAD

PERIMETER DESCRIPTION:

A PARCEL OF LAND LOCATED IN A PORTION OF THE SOUTHEAST QUARTER AND THE SOUTHWEST QUARTER OF THE SOUTHEAST QUARTER OF SECTION 28 AND THE NORTHEAST QUARTER AND THE NORTHWEST QUARTER OF THE NORTHEAST QUARTER OF SECTION 33, TOWNSHIP 2 NORTH, RANGE 3 EAST, WILLAMETTE MERIDIAN, CITY OF CAMAS, CLARK COUNTY, WASHINGTON, DESCRIBED AS FOLLOWS:

BEGINNING AT THE NORTHWEST CORNER OF THE NORTHEAST QUARTER OF SAID SECTION 33,

THENCE SOUTH 88°28'30" EAST, ALONG THE NORTH LINE OF SAID NORTHWEST QUARTER AND THE SOUTH LINE OF "LACAMAS WOODS" ACCORDING TO THAT CERTAIN PLAT RECORDED IN BOOK 311 OF PLAT AT PAGE 017 RECORDS OF CLARK COUNTY WASHINGTON, FOR A DISTANCE OF 340.00 FEET, TO THE SOUTHEAST CORNER OF LOT 7 OF SAID PLAT, SAID POINT BEING THE TRUE POINT OF BEGINNING;

THENCE NORTH 01°25'26" EAST, ALONG THE EAST LINE OF LOTS 7 AND 8 OF SAID "LACAMAS WOODS" PLAT, FOR A DISTANCE OF 62.08 FEET, TO AN EXISTING ROCK WALL;

THENCE NORTH 16°16'42" EAST, ALONG SAID ROCK WALL, 7.55 FEET;

THENCE NORTH 28°42'49" EAST, ALONG SAID ROCK WALL, 3.73 FEET TO THE SOUTH LINE OF SAID LOT 8;

THENCE SOUTH 88°32'47" EAST, ALONG THE SOUTH LINE OF SAID LOT 8, FOR A DISTANCE OF 74.38 FEET, TO THE SOUTHEAST CORNER OF SAID "LACAMAS WOODS" PLAT AND THE SOUTHWEST CORNER OF "FOREST GLEN" ACCORDING TO THAT CERTAIN PLAT RECORDED IN BOOK 311 AT PAGE 389 RECORDS OF CLARK COUNTY WASHINGTON;

THENCE SOUTH 88°56'31" EAST, ALONG THE SOUTH LINE OF SAID "FOREST GLEN" PLAT, FOR A DISTANCE OF 160.17 FEET;

THENCE SOUTH 88°57'30" EAST, ALONG THE SOUTH LINE OF SAID "FOREST GLEN" PLAT, FOR A DISTANCE OF 171.16 FEET;

THENCE SOUTH 88°52'42" EAST, ALONG THE SOUTH LINE OF SAID "FOREST GLEN" PLAT, FOR A DISTANCE OF 108.49 FEET, TO THE SOUTHEAST CORNER THEREOF AND THE SOUTHWEST CORNER OF "LACAMAS SHORES PHASE 6D" ACCORDING TO THE PLAT THEREOF RECORDED IN BOOK "J" OF PLATS AT PAGE 559 RECORDS OF CLARK COUNTY WASHINGTON;

THENCE SOUTH 89°00'00" EAST, ALONG THE SOUTH LINE OF SAID "LACAMAS SHORES PHASE 6D", FOR A DISTANCE OF 292.41 FEET, TO THE SOUTHEAST CORNER THEREOF AND THE SOUTHWEST CORNER OF TRACT "A" OF "LACAMAS SHORES PHASE 6B" ACCORDING TO THE PLAT THEREOF RECORDED IN BOOK "J" OF PLATS AT PAGE 157 RECORDS OF CLARK COUNTY WASHINGTON;

THENCE SOUTH 88°55'22" EAST, ALONG THE SOUTH LINE OF SAID TRACT "A", FOR A DISTANCE OF 240.79 FEET;

THENCE SOUTH 01°21'31" WEST, ALONG THE WEST LINE OF LOTS 32, 33 AND 34 OF SAID "LACAMAS SHORES PHASE 6B" PLAT AND THE WEST LINE OF LOT 15 OF "LACAMAS SHORES PHASE 2" ACCORDING TO THAT CERTAIN PLAT RECORDED IN BOOK "H" OF PLAT AT PAGE 417, RECORDS OF CLARK COUNTY, WASHINGTON, FOR A DISTANCE OF 496.01 FEET, TO THE NORTHEAST CORNER OF THAT CERTAIN TRACT OF LAND CONVEYED TO THE CITY OF CAMAS BY DEED RECORDED UNDER AUDITORS FILE NUMBER 499448 D, RECORDS OF CLARK COUNTY WASHINGTON;

THENCE ALONG SAID CITY OF CAMAS BOUNDARY LINE THE FOLLOWING COURSE AND DISTANCES:

THENCE NORTH 89°59'00" WEST, 64.35 FEET;

THENCE NORTH 47°14'47" WEST, 41.21 FEET;

THENCE SOUTH 56°45'13" WEST, 138.86 FEET;

THENCE NORTH 82°29'37" WEST, 88.35 FEET;

THENCE SOUTH 68°01'13" WEST, 176.70 FEET;

THENCE NORTH 64°13'04" WEST, 125.01 FEET;

THENCE NORTH 72°22'03" WEST, 106.70 FEET;

THENCE SOUTH 00°00'01" WEST, 179.32 FEET;

THENCE SOUTH 43°48'44" EAST, 113.48 FEET;

THENCE SOUTH 23°06'03" EAST, 68.84 FEET;

THENCE SOUTH 53°56'50" EAST, 485.69 FEET;

THENCE SOUTH 00°01'16" EAST, 57.16 FEET, TO A 5/8" IRON ROD WITH YELLOW PLASTIC CAP INSCRIBED LDC DESIGN GROUP, HELD FOR THE NORTHWEST CORNER OF THE BAFUS TRACT, AS SHOWN IN THAT CERTAIN RECORDED SURVEY BOOK 54 OF SURVEY AT PAGE 153 RECORDS OF CLARK COUNTY WASHINGTON;

THENCE LEAVING SAID CITY OF CAMAS PROPERTY LINE, SOUTH 00°00'45" EAST, ALONG THE WEST LINE OF SAID BAFUS TRACT, 124.73 FEET, TO THE NORTHERLY RIGHT-OF-WAY LINE OF NW LAKE ROAD;

THENCE ALONG SAID NORTHERLY RIGHT-OF-WAY LINE, THE FOLLOWING COURSES AND DISTANCES:

THENCE NORTH 58°02'48" WEST, 158.51 FEET;

THENCE ALONG THE ARC OF A 2834.79 FOOT RADIUS CURVE TO THE RIGHT, FOR AN ARC DISTANCE OF 50.44 FEET, THROUGH A CENTRAL ANGLE OF 01°01'10", THE LONG CHORD OF WHICH BEARS NORTH 57°32'13" WEST, FOR A CHORD DISTANCE OF 50.44 FEET, TO AN ANGLE POINT IN THE RIGHT-OF-WAY AS DEDICATED TO THE CITY OF CAMAS PER AUDITORS FILE NUMBER 3986755 RECORDS OF CLARK COUNTY WASHINGTON;

THENCE NORTH 27°37'56" WEST, ALONG SAID CITY OF CAMAS RIGHT-OF-WAY, FOR A DISTANCE OF 12.90 FEET;

THENCE NORTH 57°37'56" WEST, ALONG SAID CITY OF CAMAS RIGHT-OF-WAY, FOR A DISTANCE OF 7.16 FEET;

THENCE NORTH 87°37'56" WEST, ALONG SAID CITY OF CAMAS RIGHT-OF-WAY, FOR A DISTANCE OF 12.00 FEET;

THENCE ALONG THE ARC OF A 2834.79 FOOT RADIUS NON-TANGENT CURVE TO THE RIGHT, FOR AN ARC DISTANCE OF 344.50 FEET, THROUGH A CENTRAL ANGLE OF 06°57'46", THE LONG CHORD OF WHICH BEARS NORTH 52°57'54" WEST, FOR A CHORD DISTANCE OF 344.29 FEET, TO AN ANGLE POINT IN THE RIGHT-OF-WAY AS DEDICATED TO THE CITY OF CAMAS PER AUDITORS FILE NUMBER 3653507 RECORDS OF CLARK COUNTY WASHINGTON;

THENCE NORTH 18°45'28" WEST, ALONG SAID CITY OF CAMAS RIGHT-OF-WAY, FOR A DISTANCE OF 10.97 FEET;

THENCE NORTH 48°45'28" WEST, ALONG SAID CITY OF CAMAS RIGHT-OF-WAY, FOR A DISTANCE OF 7.16 FEET;

THENCE NORTH 78°45'28" WEST, ALONG SAID CITY OF CAMAS RIGHT-OF-WAY, FOR A DISTANCE OF 11.39 FEET;

THENCE ALONG THE ARC OF A 2834.79 FOOT RADIUS NON-TANGENT CURVE TO THE RIGHT, FOR AN ARC DISTANCE OF 282.05 FEET, THROUGH A CENTRAL ANGLE OF 05°42'02", THE LONG CHORD OF WHICH BEARS NORTH 46°05'50" WEST, FOR A CHORD DISTANCE OF 281.93 FEET, TO THE POINT OF TANGENT;

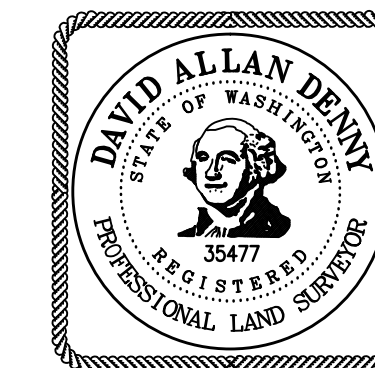
THENCE NORTH 43°14'48" WEST, ALONG SAID NW LAKE ROAD RIGHT-OF-WAY, FOR A DISTANCE OF 437.17 FEET, TO THAT CERTAIN BOUNDARY LINE AGREEMENT BETWEEN SARAH L. DEDMORE AND LAKE HILLS LLC, BY DEED RECORDED UNDER AUDITORS FILE NUMBER 5088566 RECORDS OF CLARK COUNTY WASHINGTON;

THENCE NORTH 19°24'01" EAST, ALONG THE EAST LINE OF SAID BOUNDARY LINE AGREEMENT, FOR A DISTANCE OF 409.18 FEET, TO THE TRUE POINT OF BEGINNING;

CONTAINING: 18.30 ACRES OF LAND, MORE OR LESS.

TOGETHER WITH AND SUBJECT TO: EASEMENTS, RESERVATIONS, COVENANTS AND RESTRICTIONS APPARENT OR OF RECORD.

BASIS OF BEARING: NAD 83/91 WASHINGTON STATE PLANE COORDINATE SYSTEM SOUTH ZONE. LONG CHORD BEARS NORTH 52°57'54" WEST, FOR A CHORD DISTANCE OF 344.29 FEET. COMBINED SCALE FACTOR: 0.9999316 (AT NW CORNER OF SECTION 33) PER RENTON SURVEY BOOK 55 PAGE 130



LAKE HILLS SUBDIVISION

A SUBDIVISION OF A PORTION OF THE SE 1/4 AND SW 1/4 OF THE SE 1/4 OF SECTION 28 AND THE NE 1/4 AND THE NW 1/4 OF THE NE 1/4 OF SECTION 33 T. 2 N., R. 3 E., W.M. CITY OF CAMAS CLARK COUNTY, WASHINGTON
JOB NO: 06-586 JANUARY 7, 2015
SHEET 1 OF 5

CITY OF CAMAS MAYOR:

APPROVED: _____ DATE
CITY OF CAMAS MAYOR

CITY OF CAMAS FINANCE DIRECTOR:

THERE ARE NO DELINQUENT SPECIAL ASSESSMENTS AND ALL SPECIAL ASSESSMENTS ON ANY OF THE PROPERTY THAT IS DEDICATED AS STREETS, ALLEYS OR FOR OTHER PUBLIC USE ARE PAID IN FULL AT THE DATE OF CERTIFICATION.

ATTESTED BY: _____ DATE
CITY OF CAMAS FINANCE DIRECTOR

CITY OF CAMAS COMMUNITY DEVELOPMENT DEPARTMENT:

APPROVED: _____ DATE
CITY OF CAMAS COMMUNITY DEVELOPMENT DIRECTOR, OR DESIGNEE

CITY OF CAMAS ENGINEER:

A) ALL IMPROVEMENTS HAVE BEEN INSTALLED IN ACCORDANCE WITH THE REQUIREMENTS OF THIS TITLE AND WITH THE PRELIMINARY PLAT APPROVAL;

B) ALL IMPROVEMENTS MEET CURRENT PUBLIC WORKS DRAWING STANDARDS FOR ROAD, UTILITY AND DRAINAGE CONSTRUCTION PLANS;

C) ORIGINAL AND REPRODUCIBLE MYLAR OR ELECTRONIC RECORDS IN A FORMAT APPROVED BY THE PUBLIC WORKS DIRECTOR OR DESIGNEE AND CERTIFIED BY THE DESIGNING ENGINEER AS BEING "AS CONSTRUCTED" HAVE BEEN SUBMITTED FOR CITY RECORDS.

APPROVED: _____ DATE
CITY OF CAMAS ENGINEER

FIRE CHIEF:

APPROVED: _____ DATE
FIRE CHIEF, OR DESIGNEE

CLARK COUNTY ASSESSOR:

THIS PLAT MEETS THE REQUIREMENTS OF R.C.W 58.17.170, LAWS OF WASHINGTON, TO BE KNOWN AS LAKE HILLS SUBDIVISION, PLAT NO. _____ IN THE COUNTY OF CLARK, STATE OF WASHINGTON.

COUNTY ASSESSOR DATE

CLARK COUNTY AUDITOR:

FILED FOR RECORD THIS _____ DAY OF _____, 2014
IN BOOK _____ OF PLATS, AT PAGE _____
AT THE REQUEST OF LAKE HILLS, LLC
AUDITOR'S RECEIVING NO. _____

DEPUTY/COUNTY AUDITOR

SURVEYOR'S CERTIFICATE:

I HEREBY CERTIFY THAT THIS PLAT AS SHOWN IS A TRUE RETURN FROM THE FIELD AND THAT THE DELINEATION IS CORRECT TO THE BEST OF MY KNOWLEDGE AND BELIEF.

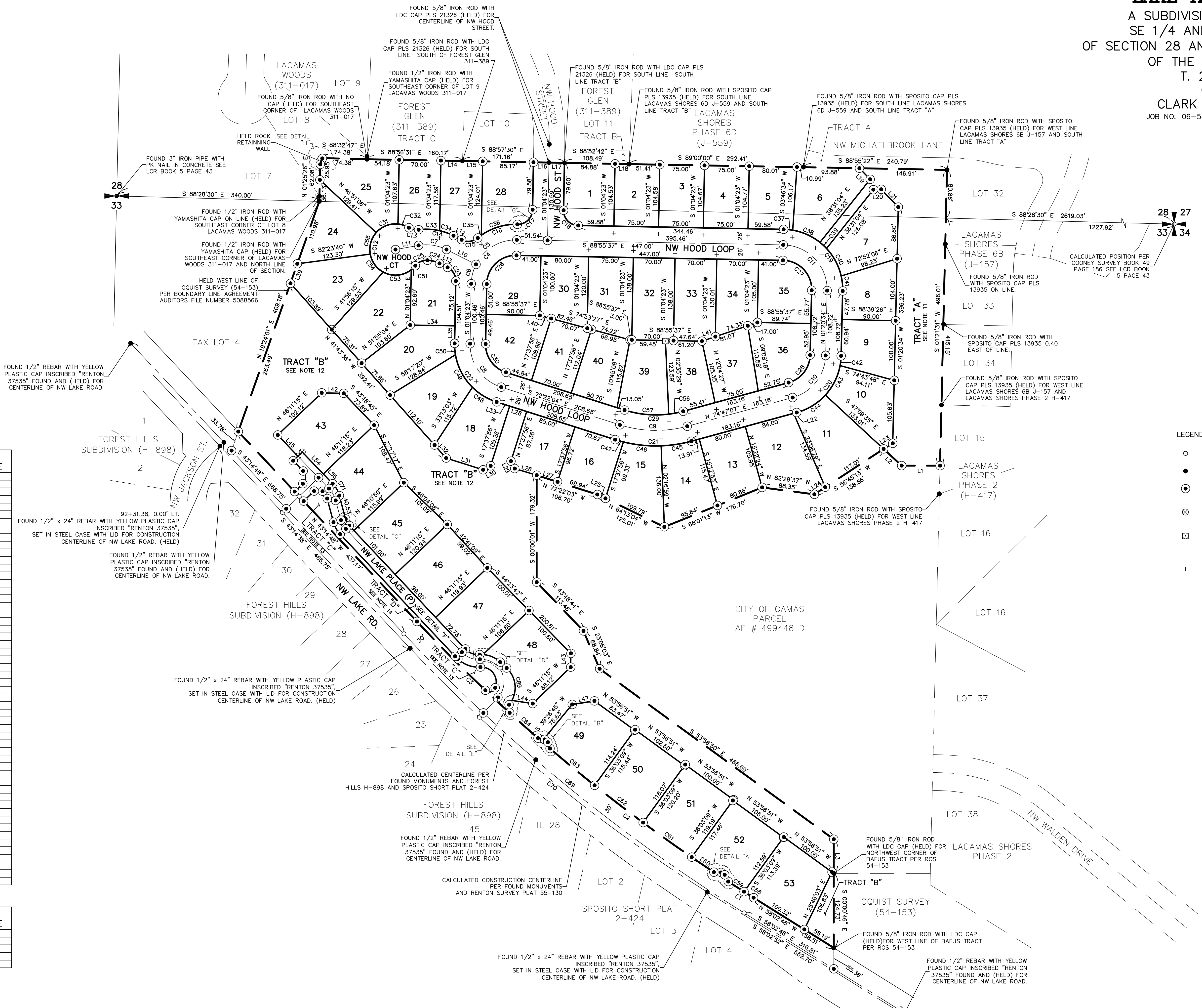
DAVID A DENNY, PROFESSIONAL LAND SURVEYOR DATE
PLS NO. 35477

UTILITY AND SIDEWALK EASEMENT:

AN EASEMENT IS HEREBY RESERVED UNDER AND UPON THE EXTERIOR SIX (6) FEET AT THE FRONT BOUNDARY LINES OF ALL LOTS FOR THE INSTALLATION, CONSTRUCTING, RENEWING, OPERATING AND MAINTAINING ELECTRIC, TELEPHONE, TV CABLE, WATER AND SANITARY SEWER SERVICES. ALSO A SIDEWALK EASEMENT AS NECESSARY TO COMPLY WITH ADA SLOPE REQUIREMENTS UPON THE EXTERIOR SIX (6) FEET ALONG THE FRONT BOUNDARY LINES OF ALL LOTS ADJACENT TO PUBLIC STREETS.

LOT	S.F.
1	8741.27'
2	7840.17'
3	7847.09'
4	7853.84'
5	8133.03'
6	10709.55'
7	10946.37'
8	8035.09'
9	8003.02'
10	9610.76'
11	11469.27'
12	11642.47'
13	8874.32'
14	9783.84'
15	9589.11'
16	8239.53'
17	8188.36'
18	10091.20'
19	10018.46'
20	10794.18'
21	7637.92'
22	11846.78'
23	11047.17'
24	9708.90'
25	11705.69'
26	8007.77'
27	8936.71'
28	9141.22'
29	8484.74'
30	8799.81'
31	9702.49'
32	9660.00'
33	9569.98'
34	8224.88'
35	8927.72'
36	9645.11'
37	8366.17'
38	8041.85'
39	9016.99'
40	8390.08'
41	7734.84'
42	9087.18'
43	11972.13'
44	11943.30'
45	11965.76'
46	11922.72'
47	11961.99'
48	11989.08'
49	11999.43'
50	11999.29'
51	11998.97'
52	11999.10'
53	11997.73'

TRACT	S.F.
A	44,078'
B	116,392'
C	5,164'
D	13,361'



- LEGEND:**
- INDICATES FOUND MONUMENT POSITION
 - INDICATES FOUND MONUMENT AS NOTED
 - ⊙ INDICATES 1/2" x 24" REBAR WITH YELLOW PLASTIC CAP INSCRIBED "D.DENNY 35477" SET.
 - ⊗ INDICATES ROCK NAIL WITH BRASS WASHER "PLS 35477" SET.
 - ⊠ INDICATES 1.00' WITNESS CORNER SET S'0235'29"E FROM CALCULATED POSITION, 1/2" x 24" REBAR WITH YELLOW PLASTIC CAP INSCRIBED "D.DENNY 35477" SET.
 - ⊕ INDICATES ROCK NAIL WITH BRASS WASHER INSCRIBED "35477" SET AT THE EXTENSION OF LOT LINE IN THE CURB FOR THE PURPOSE OF LINE NOT DISTANCE

BASIS OF BEARING: NAD 83/91, WASHINGTON STATE PLANE COORDINATE SYSTEM, SOUTH ZONE, US SURVEY FEET.
 CONVERSION SCALE: 1" = 80.0000 FEET
 CORNER SCALE: 1" = 80.0000 FEET (AT NW CORNER OF SECTION 33) PER RENTON SURVEY BOOK 55 PAGE 130

DAVID ALLAN DENT
 REGISTERED PROFESSIONAL LAND SURVEYOR
 35477

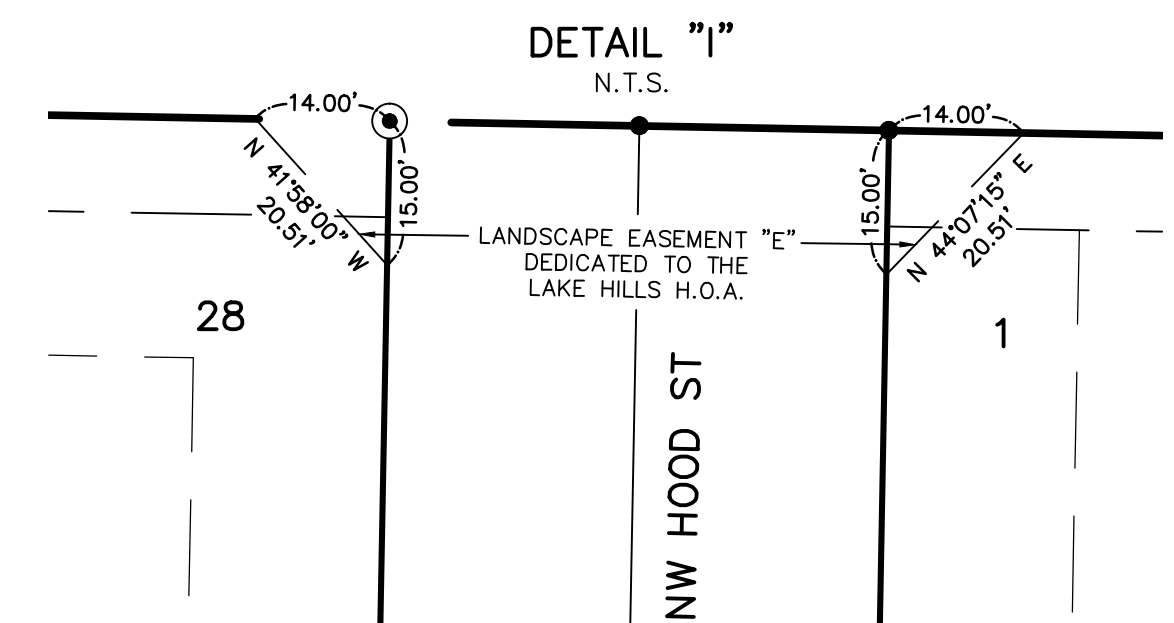
SCALE 1 INCH = 80 FEET

PREPARED BY:
 MINISTER AND GLAESER
 SURVEYING, INC.
 2200 E. EVERGREEN BLVD.
 VANCOUVER, WA. 98661
 (360) 694-3313

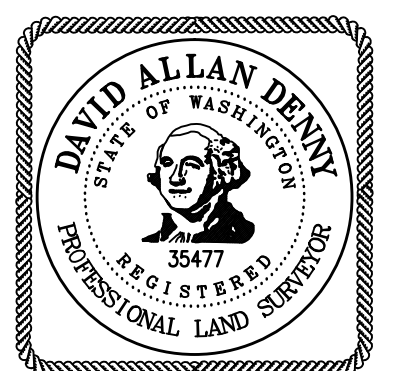
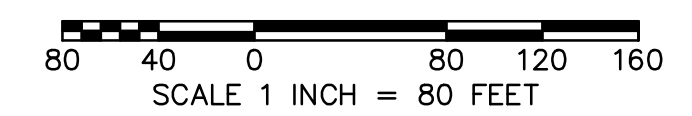
LAKE HILLS SUBDIVISION

A SUBDIVISION OF A PORTION OF THE
 SE 1/4 AND SW 1/4 OF THE SE 1/4
 OF SECTION 28 AND THE NE 1/4 AND THE NW 1/4
 OF THE NE 1/4 OF SECTION 33
 T. 2 N., R. 3 E., W.M.
 CITY OF CAMAS
 CLARK COUNTY, WASHINGTON
 JOB NO: 06-586 JANUARY 7, 2015
 SHEET 4 OF 5

YARD SETBACKS ARE AS FOLLOWS:
 SIDE AND CORNER REAR YARD: 5 FEET
 SIDE YARD FLANKING A STREET: 20 FEET
 REAR YARD: 25 FEET
 MINIMUM FRONTAGE ON A CUL-DE-SAC OR CURVE: 30 FEET
 FRONT YARD LOTS 43-48: PROVIDED ON THIS SHEET
 FRONT YARD ALL OTHER LOTS: 20 FEET



BASIS OF BEARING: NAD 83/91, WASHINGTON STATE PLANE
 COORDINATE SYSTEM, SOUTH ZONE, US SURVEY FEET.
 CONVERSION ANGLE: 25.1386936
 CONVERSION SCALE FACTOR: 1.0000916
 (AT NW CORNER OF SECTION 33) PER RENTON SURVEY BOOK 55 PAGE 130





LINE TABLE

LINE	BEARING	DISTANCE
L64	S 46°46'09" E	3.15'
L65	S 84°31'28" E	37.96'
L66	S 70°34'11" E	6.14'
L67	S 32°45'24" E	12.60'
L68	N 05°41'30" E	8.09'
L69	N 10°57'28" W	9.73'
L70	S 77°38'06" E	9.97'
L71	N 15°55'49" E	5.08'
L72	S 89°16'49" E	6.28'
L73	N 34°05'04" W	18.85'
L74	S 68°26'54" E	15.89'
L75	N 04°14'40" E	10.62'
L76	N 49°56'44" W	8.44'
L77	N 34°26'20" W	31.44'
L78	N 62°41'59" W	11.49'
L79	N 37°39'21" W	17.95'
L80	N 34°35'43" W	16.01'
L81	N 44°46'51" W	20.16'
L82	N 56°19'29" W	32.96'
L83	N 24°00'10" W	23.76'
L84	N 24°43'15" W	25.78'
L85	N 25°33'08" W	18.27'
L86	N 33°23'02" W	6.40'

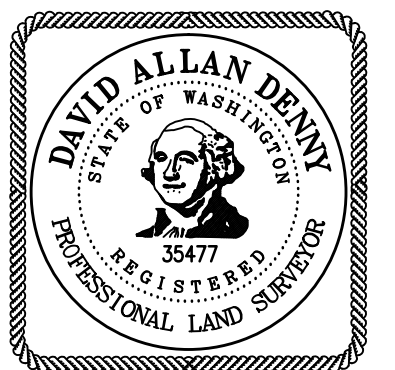
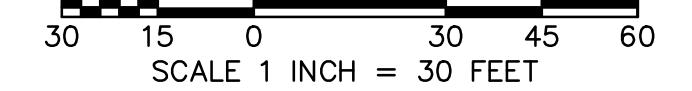
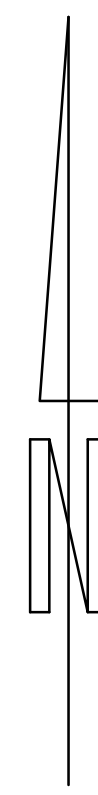
LINE TABLE

LINE	BEARING	DISTANCE
L87	N 18°49'14" W	6.21'
L88	N 63°57'51" W	8.06'
L89	N 32°51'59" W	9.26'
L90	N 22°15'54" W	34.13'
L91	N 79°13'10" E	9.81'
L92	S 61°16'46" E	4.42'
L93	S 68°00'58" E	7.81'
L94	S 51°35'32" E	9.27'
L95	S 61°20'17" E	27.51'
L96	S 89°03'06" E	5.68'
L97	N 25°39'29" W	21.96'
L98	N 36°47'01" W	16.49'
L99	N 30°15'14" W	9.33'
L100	N 34°39'40" E	6.01'
L101	N 28°22'12" E	7.13'
L102	N 02°54'57" E	9.83'
L103	N 06°59'33" E	7.18'
L104	N 53°31'30" E	3.34'
L105	N 65°07'08" E	10.62'
L106	N 16°43'58" E	3.74'
L107	N 06°33'03" E	13.73'
L108	N 16°41'30" E	10.45'

CURVE TABLE

CURVE	RADIUS	DELTA	ARC DIST.	CHORD BEARING	CHORD DIST.
C92	5.66'	129°02'37"	12.74'	S 87°36'56" E	10.22'
C93	6.97'	60°39'38"	7.38'	S 57°41'21" W	7.04'
C94	11.90'	94°55'49"	19.72'	N 61°32'28" E	17.54'
C95	11.76'	88°27'33"	18.16'	S 51°03'03" W	16.41'
C96	4.73'	125°03'07"	10.32'	N 37°45'59" E	8.39'
C97	4.59'	149°24'38"	11.97'	S 37°33'57" W	8.85'
C98	6.68'	103°03'11"	12.02'	N 72°07'19" E	10.46'
C99	25.45'	59°58'26"	26.64'	N 24°32'40" W	25.44'
C100	28.24'	28°41'55"	14.14'	N 36°13'33" W	14.00'
C101	31.50'	17°45'53"	9.77'	S 46°48'53" E	9.73'
C102	56.84'	10°21'06"	10.27'	S 35°02'34" E	10.26'
C103	39.55'	27°46'31"	19.17'	S 75°20'24" E	18.99'
C104	12.46'	58°46'18"	12.78'	N 22°35'13" W	12.22'
C105	44.16'	16°34'37"	12.78'	S 07°23'48" E	12.73'
C106	12.56'	32°53'01"	7.21'	N 46°47'48" W	7.11'
C107	6.52'	42°22'20"	4.82'	S 47°39'57" E	4.71'
C108	16.84'	90°34'38"	26.62'	S 24°49'31" W	23.93'
C109	14.21'	38°01'39"	9.43'	N 77°33'35" W	9.26'
C110	11.40'	35°04'01"	6.97'	S 65°30'50" E	6.87'
C111	6.17'	96°13'07"	10.36'	N 19°16'04" E	9.19'
C112	10.52'	43°06'07"	7.91'	S 12°18'40" E	7.72'
C113	100.66'	4°56'08"	8.67'	N 13°21'12" E	8.67'
C114	9.71'	43°37'11"	7.40'	S 31°28'28" W	7.22'
C115	12.69'	43°43'46"	9.68'	N 45°45'33" E	9.45'
C116	45.00'	10°05'28"	7.93'	N 33°21'17" E	7.92'

BASIS OF BEARING: NAD 83/91, WASHINGTON STATE PLANE
 COORDINATE SYSTEM, SOUTH ZONE, US SURVEY FEET.
 CONVERSION FACTOR: 1.0000078
 CORNER ELEVATION: 1100.00
 (AT NW CORNER OF SECTION 33) PER RENTON SURVEY BOOK 55 PAGE 130



RESOLUTION NO. 15-002

A RESOLUTION adopting the Camas Vision Statement.

WHEREAS, the City of Camas has solicited input from its citizens, City staff, and elected officials as to the respective visions for our community and to create a vision that captures what citizens value most about Camas today, while planning twenty years from now; and

WHEREAS, it is in the interest of the City of Camas to adopt a Vision Statement, which will act as a cornerstone of the periodic update to the City's comprehensive plan document.

NOW, THEREFORE, BE IT RESOLVED BY THE COUNCIL OF THE CITY OF CAMAS AS FOLLOWS:

I

The City of Camas hereby adopts the following Vision Statement:

Camas Vision Statement

The Camas 2035 Vision was developed to guide the goals and policies of the Camas Comprehensive Plan. The Vision is written in the present tense, as if we are describing Camas as it exists in 2035. Some aspects of the vision can be found in Camas today, while others represent aspirations for the future.

Introduction

In the year 2035, residents of Camas continue to appreciate their safe, diverse and welcoming community. Those that were raised in Camas will return for family wage jobs, and to ultimately retire here. Camas maintains its small town character while accommodating future residents. Camas is well known for its excellent schools, thriving businesses and ready access to metropolitan amenities and natural features. A vibrant downtown and community events bring neighbors together and are enjoyed by all.

Vital, Stable and Livable Neighborhoods

Camas is a well planned and connected city where residents enjoy pedestrian and bicycle paths between neighborhoods and to downtown. Historic structures are maintained and rehabilitated to accommodate new homes and businesses. There is a wide variety and range of housing for all ages and income levels. Quality public facilities, services and utilities contribute to a high quality of life.

Diversified Economy

The economy has grown to attract a variety of businesses that offer stable employment opportunities

RESOLUTION NO. 15-002

and family wage jobs in the medical and high-tech fields. Camas is a gateway to nature and recreational opportunities, leading to a robust tourism industry. Professional office, medical and industrial uses will typify western Camas, with retail businesses supporting the large campus firms. The north shore area will fulfill the employment and retail needs of the growing population on the northeast side, and reduce trips outside of the city. Downtown Camas retains its historic atmosphere as a walkable, attractive place to shop, dine and gather. Housing within the city's core contributes to a town center that supports local businesses.

Public Services

Camas continues to have an excellent school system, an asset that draws families to the community. Students and their families enjoy the city's parks, trails, community centers and other recreational opportunities. The library continues its vital role as a place of learning. Residents value well-funded police, fire and emergency response services. Proficient government agencies maintain existing city assets and coordinate future development.

Natural Environment

Camas appreciates and remains good stewards of its natural environment. A vegetated corridor provides habitat and safe passage for wildlife from Green Mountain to the Columbia River. Lacamas Lake is treasured as a unique and pristine resource. City policies preserve trees and natural areas.

II

ADOPTED by the Council of the City of Camas and approved by the Mayor this _____ day of _____, 2015.

SIGNED: _____
Mayor

ATTEST: _____
Clerk

APPROVED as to form:

City Attorney

CITY OF CAMAS, WASHINGTON

ORDINANCE NO. 15-003

AN ORDINANCE of the City of Camas, Washington, ratifying and approving various loans with the State of Washington.

WHEREAS, the City of Camas, Washington (the “City”) entered into various loans with the State of Washington (the “State”) between 1997 and 2012 and the City Council approved each loan by motion; and

WHEREAS, it is in the interest of the City for the City Council to ratify these loans by ordinance;

NOW, THEREFORE, THE CITY COUNCIL OF THE CITY OF CAMAS, WASHINGTON, DO ORDAIN AS FOLLOWS:

Section 1. Ratifying and Approving the Loans. The City Council hereby ratifies and approves the City entering into the following loans with the State and the execution of the loan agreements for each loan:

Type of Loan	Year	Project	Original Amount	Source of Repayment
Public Works Trust Fund Loan	1997	Parker Street Project	\$ 900,000.00	General Obligation
Public Works Trust Fund Loan	1999	Wastewater Treatment Plant Upgrade	3,195,000.00	Sewer Utility
Public Works Trust Fund Loan	2001	1 st Street Improvements	613,731.00	General Obligation
Department of Ecology Loan	2001	Wastewater Treatment Plant Upgrade	8,163,523.00	Sewer Utility
Community Economic Revitalization Board Loan	2001	Fisher Basin Waterline	600,000.00	Water Utility
Public Works Trust Fund Loan	2003	1 st Street Improvements	2,522,398.08	General Obligation
Public Works Trust Fund Loan	2007	Wastewater Treatment Plant Upgrade	1,000,000.00	Sewer Utility
Public Works Trust Fund Loan	2008	Wastewater Treatment Plant Upgrade	10,000,000.00	Sewer Utility

<u>Type of Loan</u>	<u>Year</u>	<u>Project</u>	<u>Original Amount</u>	<u>Source of Repayment</u>
Drinking Water State Revolving Fund Loan	2009	Camas Well #14 Construction	\$ 663,000.00	Water Utility
Department of Ecology	2011	Wastewater Treatment Plant Upgrade	5,168,026.26	Sewer Utility
Drinking Water State Revolving Fund Loan	2012	544 Ft. Pressure Zone Project	7,920,792.00	Water Utility
Public Works Trust Fund Loan	2012	Sanitary Sewer Transmission Main	3,740,000.00	Sewer Utility

Section 2. Effective Date of Ordinance. This ordinance shall take effect and be in force from and after its passage and five days following its publication as required by law.

PASSED by the City Council and APPROVED by the Mayor of the City of Camas, Washington, at an open public meeting thereof, this ____ day of _____, 2015.

Mayor

ATTEST:

City Clerk

CERTIFICATION

I, the undersigned, City Clerk of the City of Camas, Washington (the “City”), hereby certify as follows:

1. The attached copy of Ordinance No. ____ (the “Ordinance”) is a full, true and correct copy of an ordinance duly passed at a regular meeting of the City Council of the City held at the regular meeting place thereof on _____, 2015, as that ordinance appears on the minute book of the City.

2. The Ordinance will be in full force and effect five days after publication in the City’s official newspaper, which publication date is _____, 2015.

3. A quorum of the members of the City Council was present throughout the meeting and a majority of the members voted in the proper manner for the passage of the Ordinance.

Dated: _____, 2015.

CITY OF CAMAS, WASHINGTON

City Clerk

SERVICE AGREEMENT

AGREEMENT made this day by and between EAST COUNTY FIRE and RESCUE (ECFR), and the CITY OF CAMAS, hereinafter referred to as "Taxing Districts",

WITNESSETH:

WHEREAS, the parties hereto and The City of Washougal entered into an agreement in 2006 for the provision, funding and administration of a Washington State Licensed Advanced Life Support (ALS) Emergency Medical Transport Services Program within their respective Taxing Districts, which agreement expires at the end of 2013, and

WHEREAS, the parties hereto and The City of Washougal renewed the Agreement for two additional years on November 15, 2012, and

WHEREAS, the fire departments of the City of Camas and the City of Washougal have merged and are under the administration of the City of Camas, and

WHEREAS, the parties hereto desire to continue to provide a Washington State licensed Advanced Life Support (ALS) Emergency Medical Transport Services Program within their respective Taxing Districts, and

WHEREAS, the parties hereto desire to continue to provide for administration of said ALS Emergency Medical Care and Services Program, and

WHEREAS, each of said Taxing Districts has obtained funding for such a program by means of an Emergency Care Property Tax Levy as provided for by RCW 84.52.069, and

WHEREAS, Camas renewed its levy beginning in 2013 at a new rate of forty-six cents (\$.46) per one thousand dollars (\$1,000.00) of the assessed valuation of property, and

WHEREAS, ECFR's levy of thirty-five cents (\$.35) per one thousand dollars (\$1,000.00) of assessed value was renewed at the end of 2014, and

WHEREAS, Washougal's current levy of fifty cents (\$.50) per one thousand dollars (\$1,000.00) of the assessed valuation of property expires at the end of 2016, and

WHEREAS, Washougal and Camas have entered into a separate agreement providing for Washougal to remit to Camas its share of the cost of the joint Advanced Life Support Emergency Medical Transport Services Program, and

WHEREAS, it is desired to extend the current agreement for the provision, funding and administration of a Washington State Licensed Advanced Life Support (ALS) Emergency Medical Transport Services Program through the end of 2020,

NOW, THEREFORE, in consideration of the mutual covenants and conditions herein contained, it is hereby agreed as follows:

Section 1. EMERGENCY MEDICAL SERVICE:

On and after January 1, 2015 through December 31, 2020 the City of Camas shall furnish emergency medical rescue and licensed ALS ambulance transport service to all parties within the boundaries of the Taxing Districts which are parties to this Service Agreement. The City of Camas shall administer this contract, including employment of personnel required to perform such ALS Emergency Medical Transport Services and provide the transportation equipment; provide EMS training as required by Washington Department of Health; and provide all supplies required for such emergency services. No new separate legal or administrative entity shall be created to administer the provisions of this agreement.

Section 2. ADVISORY BOARD:

An Advisory Board is hereby created in which the City of Camas, the City of Washougal, and ECFR shall each be represented by two (2) members consisting of one (1) member of its legislative body, and its fire chief or other person as may be designated by its chief executive officer. The Board shall adopt by-laws for the administration of said body, and a written copy thereof shall be provided to each Taxing District. Unless otherwise designated, all meetings of the board shall be

held at the City of Camas. Regular meetings shall be held four times per year. Special meetings may be requested by any Taxing District upon timely notice to the Camas Fire Chief specifying the requested meeting date and the intended agenda for the meeting.

Said Advisory Board shall recommend and formulate written guidelines regarding fee rates, level of ambulance services, support of Taxing District medical first response programs, and for improving and coordinating said service throughout the respective districts.

Section 3. CONTRIBUTED FUNDS:

A. In consideration of the services to be rendered by the City of Camas pursuant to this Service Agreement, ECFR shall pay to the City of Camas each year during the term of this service Agreement all or a portion of the proceeds of their EMS or regular property tax levies as specifically described below. The obligation of each Taxing District is contingent on the other Taxing Districts' obtaining all necessary voter approvals for their contributions.

The City of Camas shall contribute an amount equal to the proceeds of their respective EMS levy at a rate of forty-six cents (\$0.46) per one thousand dollars (\$1,000) of the assessed valuation of property in the applicable Taxing District as collected, and as limited by Chapter 84.55, Revised Code of Washington (generally limited annual increases in the total dollar amount of the levy to one percent, adjusted for new construction and other exceptions). East County Fire and Rescue, shall contribute an amount equal to a rate of thirty-five cents (\$0.35) per one thousand dollars (\$1,000.00) of the assessed valuation of property in the applicable Taxing District as collected.

B. East County Fire and Rescue shall make such arrangement and do such other things as may be necessary so that the Clark County Treasurer's office shall remit all funds collected

pursuant to the Emergency Medical Care and Services levies in each district directly to the City of Camas.

C. The City of Camas agrees that all funds received pursuant to this Service Agreement shall be deposited in the City of Camas Emergency Rescue Fund and shall be used only for the provision of emergency medical care or emergency medical services, including related personnel costs, training for such personnel, administrative costs, and related equipment, supplies, vehicles and structures needed for the provision of emergency medical care or emergency medical service.

Section 4. OWNERSHIP OF PROPERTY: All equipment and supplies purchased by the City of Camas for purposes of performing its obligations under this agreement shall be owned by the City of Camas. Upon termination of this agreement by any Taxing District, however, such equipment and supplies held by the terminating party shall be the property of and remain with the terminating party at the time of termination. In the event of dissolution of the emergency medical rescue and licensed ALS ambulance transport service created by this agreement, assets purchased by the City of Camas with Emergency Rescue funds, shall be distributed consistent with a process decided by the Advisory Board and approved by the legislative bodies of each Taxing District at the time of dissolution.

Section 5. RATES: Notwithstanding the provisions in Section 3 hereof requiring financial contributions from ECFR, the City of Camas shall be allowed to charge for services to be rendered hereunder as per the prevailing rates established by resolution adopted by the Camas City Council from time to time. Any increases or adjustments to said rates shall be reviewed and approved by a majority of the members of the aforescribed Advisory Board for consistency with established rate guidelines prior to adoption by Camas City Council resolution.

Section 6. HOLD HARMLESS AND INSURANCE: The City of Camas shall defend, indemnify and hold ECFR, their officers, officials, employees and volunteers harmless from any and all claims, injuries, damages, losses or suits including attorney fees arising out of or in connection with the performance of this Agreement, except for injuries and damages caused by the sole negligence or wrongful conduct of the Taxing Districts. The City of Camas further agrees to maintain during the term of this agreement liability insurance in an amount as provided for in the WCIA Joint Protection Program (currently \$15,000,000 maximum per claim), protecting itself, its officers and employees, and the Taxing Districts, their officers and employees, from claims of all persons for damages arising out of negligence or wrongful conduct by the City of Camas, its officers and employees, in the providing of emergency medical services pursuant to this agreement.

Section 7. TERM: Unless earlier terminated pursuant to Section 9, this agreement shall commence on January 1, 2015, and terminated on December 31, 2020. At that time, if this agreement is not renewed all obligations of all parties to this agreement shall cease. All funds remaining in the City of Camas Emergency Rescue Fund as of December 31, 2020 shall be expended for ambulance and emergency aid services.

Section 8. SEVERABILITY: If any section or part of this Service Agreement is held by a court to be invalid, such action shall not affect the validity of any other part of this Service Agreement.

Section 9. TERMINATION: Either party to this Service Agreement may terminate their participation in the Service Agreement by delivering a written notice of termination not less than six (6) months in advance of the desired termination date and by specifying in that notice both the facts of and the reason for that termination. The Taxing District terminating their contractual relationship shall continue to contribute funds in accordance with Section 3 of this agreement until

the desired termination date. All funds so contributed shall be expended only for the ambulance and emergency aid services. Termination by one party shall not affect the contractual status of the other parties. This Service Agreement may be terminated at any time upon unanimous written agreement of all parties to this agreement.

Section 10. AGREEMENT ON FILE: This agreement shall be filed with the City Clerks of the cities of Camas and Washougal, with the chief administrative officer or each fire protection district, with the Clark County Auditor, and with the State of Washington.

DATED this ____ day of _____, 2015.

EAST COUNTY FIRE AND RESCUE

Attest: _____
Secretary

By: _____
Commissioner

DATED this ____ day of _____, 2015.

CITY OF CAMAS

Attest: _____
Clerk

By: _____
Mayor S. Higgins

DATED this ____ day of _____, 2015.

CITY OF WASHOUGAL

Attest: _____
Clerk

By: _____
Mayor S. Guard

ORDINANCE NO. 15-004

AN ORDINANCE amending Section 15.04.030(D)(2) of the Camas Municipal Code by revising the training and certification requirements for fire alarm system installation.

The Council of the City of Camas do ordain as follows:

Section I

Camas Municipal Code 15.04.030(D)(2) is hereby amended to provide as follows:

A new subsection is added to Section 907.1.1 to provide as follows:

907.1.4. System Installation, Maintenance, and Testing. Fire alarm systems shall be installed by an electrician properly certified by the State of Washington or under the direct supervision of individuals that have factory training and certification on the system being installed or NICET Fire Protection-Fire Alarm Level II certification. Fire alarm systems shall be maintained and tested in accordance with this code by persons under the direct supervision of individuals that have factory training and certification on the system being maintained or NICET Fire Protection-Fire Alarm Level II certification.

Section II

This Ordinance shall take force and be in effect five (5) days from and after its publication according to law.

PASSED BY the Council and APPROVED by the Mayor this ____ day of _____, 2014.

SIGNED: _____
Mayor

ATTEST: _____
Clerk

APPROVED as to form:

City Attorney

Hi Ron –

You raised a question about whether the city could require an individual to have a NICET level II license for an electrician for the installation of a fire alarm system. In my opinion, the answer is “no” you cannot.

I primarily base my conclusion on the state statutory provisions in RCW 19.28.211, which you are aware of. This statute is concerned with the requirements for a certificate of competence for a master electrician, journey level electrician, or specialty electrician.

And this statute contains a pretty clear and comprehensive preemption clause in Section (4):

(4) The certificates of competency and temporary permits provided for in this chapter grant the holder the right to work in the electrical construction trade as a master electrician, journey level electrician, or specialty electrician in accordance with their provisions throughout the state and within any of its political subdivisions without additional proof of competency or any other license, permit, or fee to engage in such work.

In my opinion, this preemption clause overrides any local requirement adopted by a local jurisdiction for additional licensing or permits for electricians, even if those requirements are contained in a NFPA regulation. The NFPA regulations are not part of the state building code or fire code that must be adopted and enforced by every local government but are an additional code adopted by Camas. It is fine to adopt it, but specific provisions in that code cannot override the state statutory preemption which limits the ability of a local government to impose additional licensing or permitting requirements in this field.

So that is my conclusion. I actually was not able to locate the L and I decision that you refer to – it sounds like that decision reached a similar conclusion. However, if you have a citation for that decision, I would be glad to review it also in conjunction with this opinion.

I hope this provides some guidance.

Pat Mason

Senior Legal Consultant

pmason@mrsc.org

206.625.1300 | MRSC.org | Local Government Success